

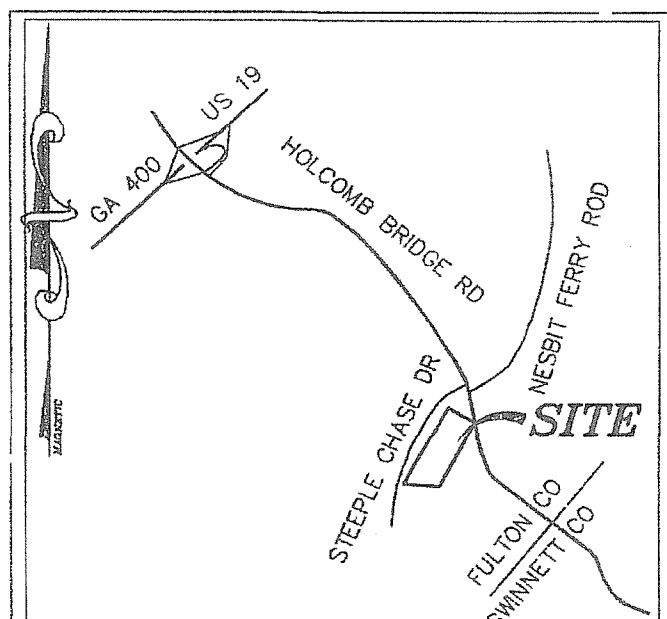
ALTA/ACSM SURVEY FOR:

RAMCO ROSWELL LLC

2025 HOLCOMB BRIDGE ROAD
LAND LOT 825 & 832, 1st DISTRICT
OF FULTON COUNTY, GEORGIA
CITY OF ROSWELL
EXISTING ZONING: O-P
PIN: 12 30800832004
423,063 SQ FT
9.71 ACRES

LEGEND:

IPF	IRON PIN SET	CMF	CONCRETE MONUMENT FOUND
IPF	IRON PIN FOUND	SSMH	SANITARY SEWER MAN HOLE
OT	OPEN TOP PIN	MHT	MAN HOLE TELEPHONE
CR	CRIMP TOP PIN	CB	CATCH BASIN
RE	REINFORCING BAR	JB	JUNCTION BOX
CL	CENTERLINE	DI	DRAINAGE INLET
R/W	RIGHT-OF-WAY	HW	HEAD WALL
LLL	LAND LOT LINE	CMP	CORRUGATED METAL PIPE
LINE	LINE	CPP	CORRUGATED PLASTIC PIPE
R	RADIUS	RCP	REINFORCED CONCRETE PIPE
CONC	CONCRETE	SSE	SANITARY SEWER EASEMENT
C	CURVE	FH	FIRE HYDRANT
PP	POWER POLE	DE	DRAINAGE EASEMENT
GV	GAS VALVE	WV	WATER VALVE
GM	GAS METER	WM	WATER METER
LMP	LAMP POLE	CS	CORROSION SURVEILLANCE
LP	SANITARY SEWER	CO	CATCH BASIN
TSP	TRAFFIC SIGNAL POLE	POB	POINT OF BEGINNING
AE	ACCESS EASEMENT	POC	POINT OF COMMENCEMENT
PROP	PROPOSED	NTS	NOT TO SCALE
AC	AIR-CONDITIONER	SWCB	SINGLE WING CATCH BASIN
GC	GAS POWER MANHOLE	UE	UTILITY EASEMENT
HC	HAND-CAP	PS	PARKING SPACES



CURRENT ZONING:
O-P

OFFICE-PROFESSIONAL
M.J.R FRONT SETBACK= 15'
SIDE SETBACK= 10'
REAR SETBACK= 35'
MAX HEIGHT= 40'
MAX LOT COVERAGE= 25%

EASEMENT STATEMENT:

EASEMENTS WIDTH AND LOCATIONS, IF ANY, OTHER THAN SHOWN HEREON, ARE UNKNOWN.

STATE WATERS/WETLANDS:

FRONTLINE SURVEYING & MAPPING, INC., HAS FOUND NO OBSERVABLE EVIDENCE OF STATE WATERS OR WETLANDS WITHIN THE BOUNDARY OF SUBJECT PROPERTY.

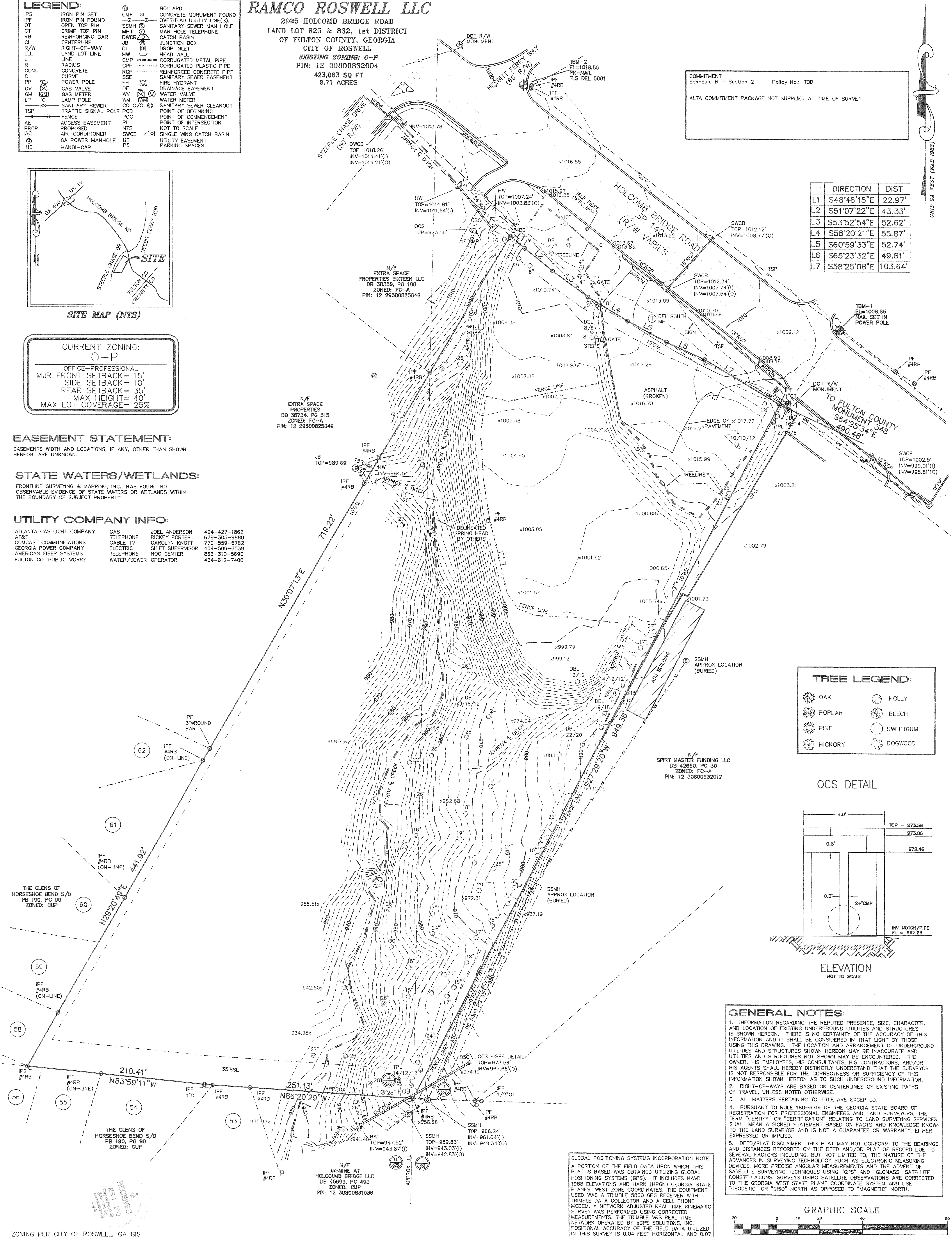
UTILITY COMPANY INFO:

ATLANTA GAS LIGHT COMPANY	GAS	JOEL ANDERSON	404-427-1862
AT&T	TELEPHONE	RICKEY PORTER	678-305-8880
COMCAST COMMUNICATIONS	CABLE TV	CAROLYN KNOTT	770-559-6782
GEORGIA POWER COMPANY	ELECTRIC	SHIFT SUPERVISOR	404-506-6539
AMERICAN FIBER SYSTEMS	TELEPHONE	NOC CENTER	866-310-5690
FULTON CO. PUBLIC WORKS	WATER/SEWER	OPERATOR	404-612-7400

COMMITMENT Schedule B - Section 2 Policy No.: TBD

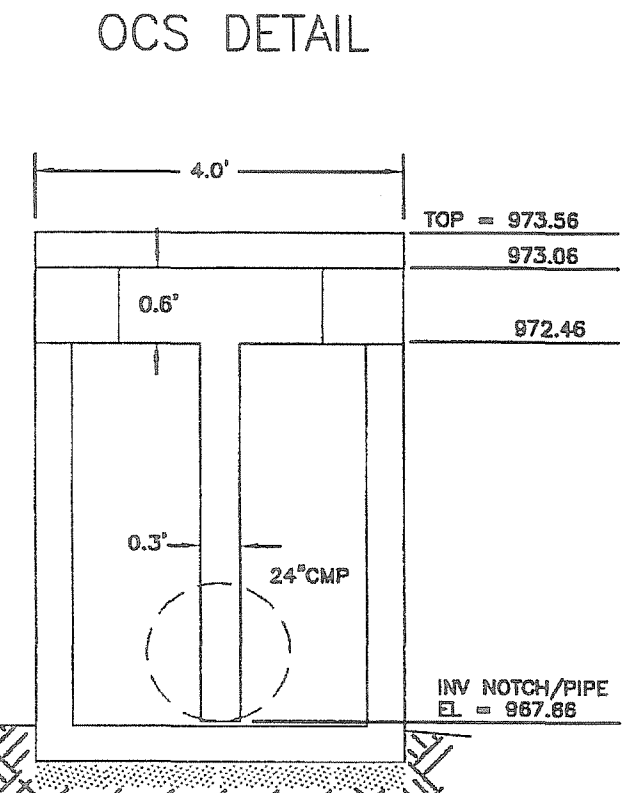
ALTA COMMITMENT PACKAGE NOT SUPPLIED AT TIME OF SURVEY.

DIRECTION	DIST
L1 S48°46'15"E	22.97'
L2 S51°07'22"E	43.33'
L3 S53°52'54"E	52.62'
L4 S58°20'21"E	55.87'
L5 S60°59'33"E	52.74'
L6 S65°23'32"E	49.61'
L7 S58°25'08"E	103.64'



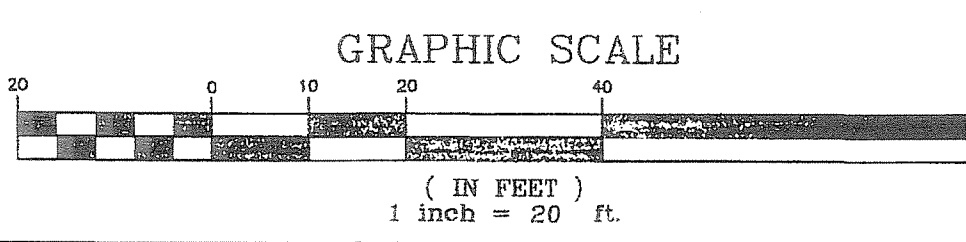
TREE LEGEND:

OAK	HOLLY
POPLAR	BEECH
PINE	SWEETGUM
HICKORY	DOGWOOD



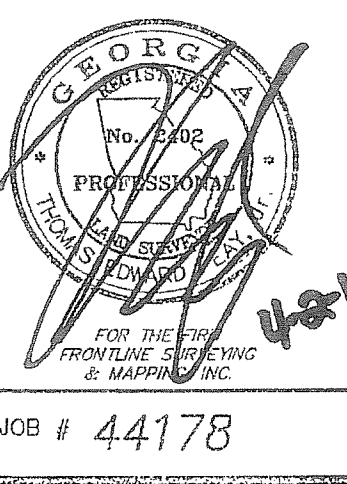
ELEVATION NOT TO SCALE

- GENERAL NOTES:**
- INFORMATION REGARDING THE REPUTED PRESENCE, SIZE, CHARACTER, AND LOCATION OF EXISTING UNDERGROUND UTILITIES AND STRUCTURES IS SHOWN HEREON. THERE IS NO CERTAINTY OF THE ACCURACY OF THIS INFORMATION AND IT SHALL BE CONSIDERED IN THAT LIGHT BY THOSE USING THIS DRAWING. THE LOCATION AND ARRANGEMENT OF UNDERGROUND UTILITIES AND STRUCTURES SHOWN HEREON MAY BE INACCURATE AND UTILITIES AND STRUCTURES NOT SHOWN MAY BE ENCOUNTERED. THE OWNER, HIS EMPLOYEES, HIS CONSULTANTS, HIS CONTRACTORS, AND/OR HIS AGENTS SHALL HEREBY DISTINCTLY UNDERSTAND THAT THE SURVEYOR IS NOT RESPONSIBLE FOR THE CORRECTNESS OR SUFFICIENCY OF THIS INFORMATION SHOWN HEREON AS TO SUCH UNDERGROUND INFORMATION.
 - RIGHT-OF-WAYS ARE BASED ON CENTERLINES OF EXISTING PATHS OF TRAVEL, UNLESS NOTED OTHERWISE.
 - ALL MATTERS PERTAINING TO TITLE ARE EXCEPTED.
 - PURSUANT TO RULE 180-6.09 OF THE GEORGIA STATE BOARD OF REGISTRATION FOR PROFESSIONAL ENGINEERS AND LAND SURVEYORS, THE TERM "CERTIFY" OR "CERTIFICATION" RELATING TO LAND SURVEYING SERVICES SHALL MEAN A SIGNED STATEMENT BASED ON FACTS AND KNOWLEDGE KNOWN TO THE LAND SURVEYOR AND IS NOT A GUARANTEE OR WARRANTY, EITHER EXPRESSED OR IMPLIED.
 - DEED/PLAT DISCLAIMER: THIS PLAT MAY NOT CONFORM TO THE BEARINGS AND DISTANCES RECORDED ON THE DEED AND/OR PLAT OF RECORD DUE TO SEVERAL FACTORS INCLUDING, BUT NOT LIMITED TO, THE NATURE OF THE ADVANCES IN SURVEYING TECHNOLOGY SUCH AS ELECTRONIC MEASURING DEVICES, MORE PRECISE ANGULAR MEASUREMENTS AND THE ADVENT OF SATELLITE SURVEYING TECHNIQUES USING "GPS" AND "GLONASS" SATELLITE CONSTELLATIONS. SURVEYS USING SATELLITE OBSERVATIONS ARE CORRECTED TO THE GEORGIA WEST STATE PLANE COORDINATE SYSTEM AND USE "GEODETIC" OR "GRID" NORTH AS OPPOSED TO "MAGNETIC" NORTH.



GLOBAL POSITIONING SYSTEMS INCORPORATION NOTE:
A PORTION OF THE FIELD DATA UPON WHICH THIS PLAT IS BASED WAS OBTAINED UTILIZING GLOBAL POSITIONING SYSTEMS (GPS). IT INCLUDES NAVO 1988 ELEVATIONS AND HARN (HPGN) GEORGIA STATE PLANES, WEST ZONE COORDINATES. THE EQUIPMENT USED WAS A TRIMBLE 5800 GPS RECEIVER WITH TRIMBLE DATA COLLECTOR AND A CELL PHONE MODEM. A NETWORK ADJUSTED REAL TIME KINEMATIC SURVEY WAS PERFORMED USING CORRECTED MEASUREMENTS. THE TRIMBLE VRS REAL TIME NETWORK OPERATED BY eGPS SOLUTIONS, INC. POSITIONAL ACCURACY OF THE FIELD DATA UTILIZED IN THIS SURVEY IS 0.04 FEET HORIZONTAL AND 0.07 FEET VERTICAL AT THE 95% CONFIDENCE LEVEL.

ZONING PER CITY OF ROSWELL, GA GIS
<http://gis.ci.roswell.ga.us/onpointwebsite/WebPages/Map/FundyViewer.aspx>



THE FIELD DATA UPON WHICH THIS PLAT IS BASED HAS A CLOSURE OF 1 FOOT IN 10,000± FEET, AN ANGULAR ERROR OF .02 SECONDS PER ANGLE POINT AND WAS ADJUSTED USING THE LEAST SQUARES METHOD. THIS PLAT HAS BEEN CALCULATED FOR CLOSURE AND FOUND TO BE ACCURATE TO 1 FOOT IN 100,000± FEET. AN ELECTRONIC TOTAL STATION AND A 100' CHAIN WERE USED TO GATHER THE INFORMATION USED IN THE PREPARATION OF THIS PLAT.

NO N.G.S. MONUMENT WAS FOUND WITHIN 500 FEET OF THIS PROPERTY. THIS PLAT WAS PREPARED FOR THE EXCLUSIVE USE OF THE PERSON, PERSONS OR ENTITY NAMED HEREON. THIS PLAT DOES NOT EXTEND TO ANY UNNAMED PERSON, PERSONS, OR ENTITY WITHOUT EXPRESS RECERTIFICATION BY THE SURVEYOR NAMING SAID PERSON, PERSONS OR ENTITY. THESE DOCUMENTS, AS INSTRUMENTS OF SERVICE, REMAIN THE PROPERTY OF FRONTLINE SURVEYING & MAPPING, INC. AND NO PART THEREOF MAY BE USED, COPIED OR REPRODUCED IN ANY FORM WITHOUT WRITTEN PERMISSION. COPYRIGHT © 2010 FRONTLINE SURVEYING AND MAPPING, INC. *** ALL MATTERS PERTAINING TO TITLE ARE EXCEPTED ***

FRONTLINE SURVEYING & MAPPING, INC.

3595 Canton Road
A-9, PMB 272
Marietta, GA 30066
Ph. (678) 355-9905
Fax (678) 355-9805

www.frontlinesurveying.com

ALTA/ACSM SURVEY FOR: **RAMCO ROSWELL LLC** FOR: CORE STATES GROUP DATE: 03/29/10

LAND LOT 825 & 832 1st DISTRICT 2nd SECTION FULTON COUNTY, GEORGIA

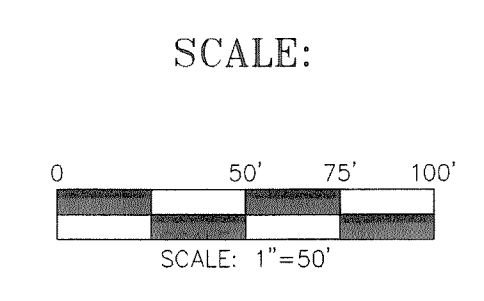
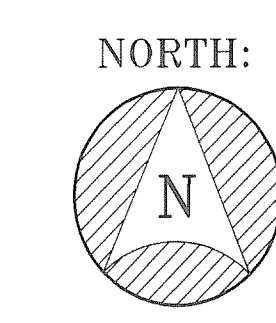
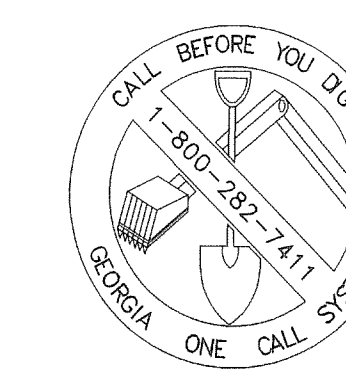
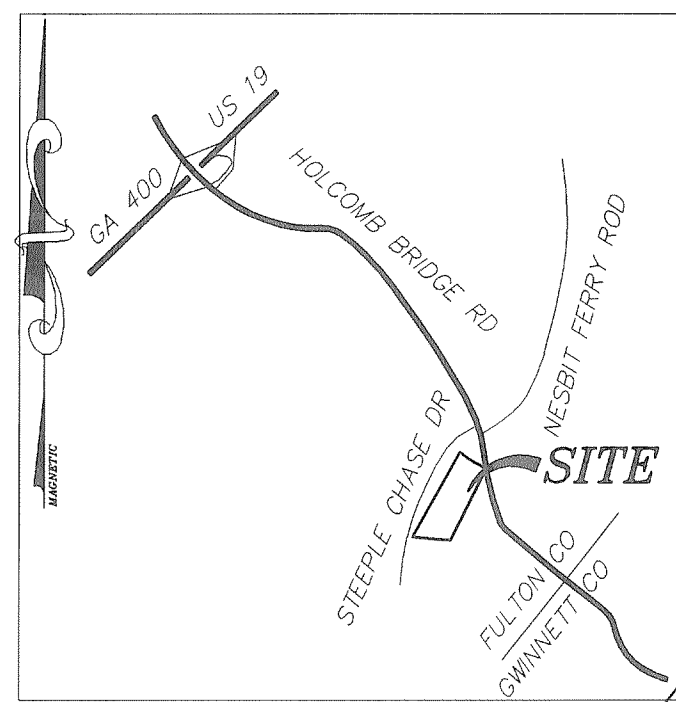
LOT	BLOCK	UNIT	REVISION	BY	DATE

SUBDIVISION: PHASE

PB _____ PG _____ I HAVE THIS DATE EXAMINED THE "FIA OFFICIAL FLOOD HAZARD MAP" AND FOUND THAT BY GRAPHIC PLOTTING ONLY THE REFERENCE PARCEL (S) IS (NOT) IN AN AREA HAVING SPECIAL FLOOD HAZARDS.

DB 41751 PG 645 MAP ID 13121C0160F EFFECTIVE DATE: 06/18/10

JOB # 44178



REVISIONS:	
04/12/10	#1
--	--
--	--
--	--
--	--
--	--
--	--

EXISTING DENSITY FACTOR (EDF) As the site has a relative even distribution of existing trees a 50x50' or 2,500sf sample area was utilized. This chart is the sample area calculation.

6 @ 3"	1.0u x 6 = 6.0u
2 @ 6"	2.4u x 2 = 4.8u
4 @ 8"	3.0u x 4 = 12.0u
1 @ 10"	3.6u x 1 = 3.6u
5 @ 12"	4.2u x 5 = 21.0u
4 @ 16"	5.3u x 4 = 21.2u
1 @ 18"	5.7u x 1 = 5.7u
	74.3u/2,500sf

TOTAL SITE 9.71 ac
Landscape 7.54ac/77%

DAYCARE OP. CONDITIONAL SITE 1.46 ac
LANDSCAPE .82ac/56%

TIDE C-3 SITE .65ac
LANDSCAPE .19ac/ 29%

MR. CLEAN C-3 SITE 1.42ac
LANDSCAPE .35ac/ 24%

CONSERVATION PARCEL 4 SITE 6.18ac

43,560 / 2,500 = 17.4 x 74.3 = 1,295 Units / Acre
1,295 x 6.18 conservation = 8,003 Entire site units

SPECIMEN TREES REMOVED
 27" HW = 7.2u 25" HW = 6.9u 12" DOG = 4.2u
 28" HW = 7.2u 10" DOG = 3.6u 4" DOG = 1.5u
 4" DOG = 1.5u 4" DOG = 1.5u 4" DOG = 1.5u
 24" HW = 6.6u TOTAL 41.7u/.9 = 47 FOUR INCH TREES
 REQUIRED/PROVIDED

CITY OF ROSWELL NOTES

MATERIALS PROHIBITED IN TREE SAVE AREAS: NO STRUCTURES IMPROVEMENTS OR ANY ACTIVITY INCLUDING SOLVENTS, MATERIAL, CONSTRUCTION MACHINERY, PORTABLE TOILETS, CONSTRUCTION TRAILERS, OR TEMPORARY SOIL DEPOSITS SHALL ENCRUCH OR BE PLACED WITHIN A DRIP LINE AND WITHIN SIX FEET OF THE AREA IMMEDIATELY OUTSIDE THE DRIP LINE, OF ANY SPECIMEN TREE OR ANY TREE WITHIN A TREE SAVE AREA UNLESS AUTHORIZED BY THE ARBORIST IN WRITING.

TREE PROTECTION DEVICES: BEFORE DEVELOPMENT, LAND CLEARING, FILLING, OR ANY LAND ALTERATION, THE DEVELOPER SHALL BE REQUIRED TO ERECT SUITABLE PROTECTIVE BARRIERS AS REQUIRED BY THE ARBORIST PURSUANT TO AN APPROVED TREE PROTECTION PLAN, INCLUDING TREE FENCES, TREE PROTECTION SIGNS, AND EROSION BARRIERS. INSPECTION OF TREE PROTECTION BARRIERS IS REQUIRED PRIOR TO THE COMMENCEMENT OF ANY LAND DISTURBANCE OR DEVELOPMENT. SAID TREE PROTECTION MEASURES SHALL REMAIN IN FUNCTIONING CONDITION UNTIL COMPLETION OF THE SITE LANDSCAPING, COMPLETION OF THE PROJECT, OR UNTIL THE CERTIFICATE OF OCCUPANCY IS ISSUED. AUTHORIZATION TO REMOVE THE PROTECTIVE DEVICES SHALL BE EVIDENCED IN WRITING BY THE ARBORIST OR BY THE ISSUANCE OF THE FINAL CERTIFICATE OF OCCUPANCY.

ACTIVE TREE PROTECTION DEVICES: MATERIALS FOR ACTIVE TREE PROTECTION SHALL CONSIST OF CHAIN LINK, ORANGE LAMINATED PLASTIC, WOODEN POST AND RAIL FENCING OR OTHER PROTECTION IS REQUIRED, EACH TREE TO BE SAVED SHALL BE MARKED AT THE BASE OF THE TRUNK WITH BLUE COLORED WATER-BASED PAINT.

PASSIVE TREE PROTECTION: MATERIALS FOR PASSIVE TREE PROTECTION SHALL CONSIST OF HEAVY MIL. PLASTIC FLAGGING, A MINIMUM OF FOUR (4) INCHES WIDE WITH DARK LETTERS READING "TREE PROTECTION AREA - DO NOT ENTER" OR EQUIVALENT SIGNAGE ON A CONTINUOUS, DURABLE RESTRAINT. NO PASSIVE TREE PROTECTION SPECIFIED FOR THIS SITE UNLESS PRIOR APPROVAL IS OBTAINED IN WRITING FROM THE CITY ARBORIST.

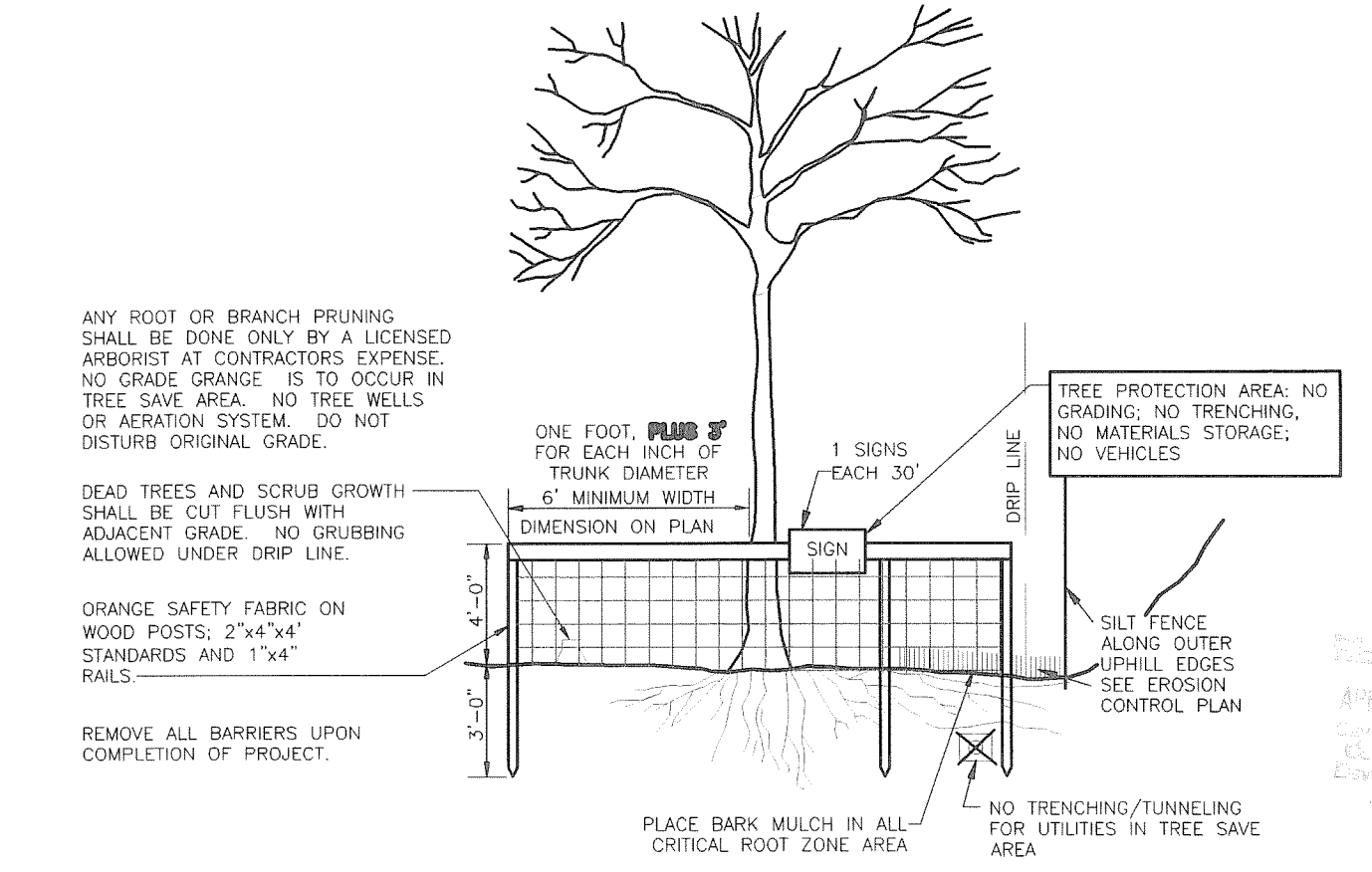
ADDITIONAL MEASURES: THE DEVELOPER SHALL TAKE MEASURES TO ENSURE THE HEALTH OF THE PROTECTED TREES DURING CONSTRUCTION, INCLUDING BUT NOT LIMITED TO THE FOLLOWING MEASURES"

1. WATER, FERTILIZE AND TREAT THE TREES FOR PESTS OR DISEASE AS NEEDED, IN ACCORDANCE WITH STANDARDS OF THE INTERNATIONAL SOCIETY OF ARBORICULTURE.
2. IF GRADING COVERS THE TREES WITH DUST, HOSE THEM OFF.
3. DO NOT RANDOMLY OR INCORRECTLY PRUNE LIVE BRANCHES SO THAT EQUIPMENT OR STRUCTURES CAN "FIT" WITHIN THE TREE'S PROTECTED ZONE.
4. DO NOT STRIP THE TOPSOIL OR REMOVE THE NATURAL LEAF MULCH OR MATERIAL FROM BENEATH A PROTECTED TREE.
5. TREES SHALL BE FELLED AWAY FROM, RATHER THAN INTO, TREE SAVE AREA.
6. PROVIDE ADEQUATE MULCHING AND WATER FOR TREES THAT WILL BE RETAINED.

TREE PROTECTION MEASURES SHALL REMAIN IN PLACE FOR A PERIOD OF TWO YEARS AFTER CONSTRUCTION WITH APPROVED REMOVAL BY ARBORIST ONLY.

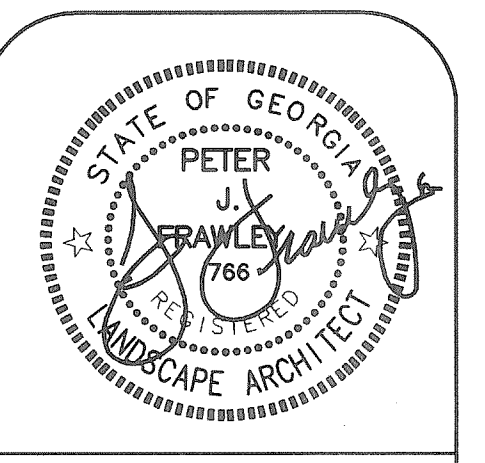
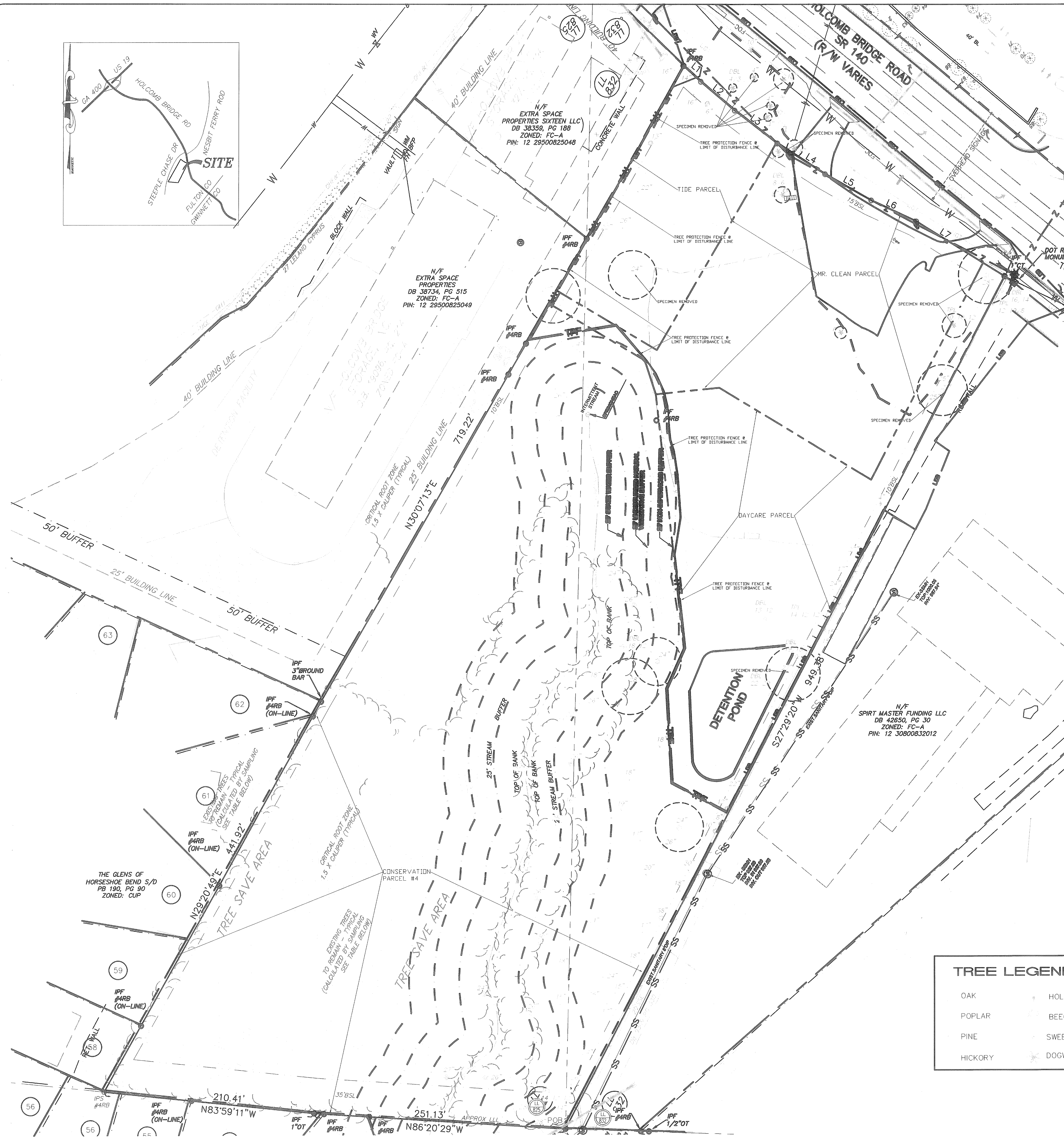
TREES SHALL BE GUARANTEED FOR A PERIOD OF 2 YEARS. ANY REPLACEMENT OF TREES UNDER THIS GUARANTEE PERIOD SHALL EXTEND THE GUARANTEE PERIOD FOR 2 ADDITIONAL YEARS FOR THE REPLACEMENT TREES.

TREE LEGEND:	
OAK	HOLLY
POPLAR	BEECH
PINE	SWEETGUM
HICKORY	DOGWOOD



TREE PROTECTION FENCE DETAIL

NOT TO SCALE
DESTRUCTION/DEATH OF TREE DUE TO CONTRACTORS OPERATIONS WILL REQUIRE "RECOMPENSE" PLANTING, AT CONTRACTOR EXPENSE.



FRAWLEY ASSOCIATES, LLC.
 LANDSCAPE ARCHITECTS
 675 SEMINOLE AVE (SUITE 101)
 ATLANTA, GA 30307 (404) 874-5091
 landscape@fellsouth.net
 www.frawleyassociates.com

TIDE/MR. CLEAN/DAYCARE
HOLCOMB BRIDGE
ROSWELL, GEORGIA

SITE SURVEY TREE PROTECTION

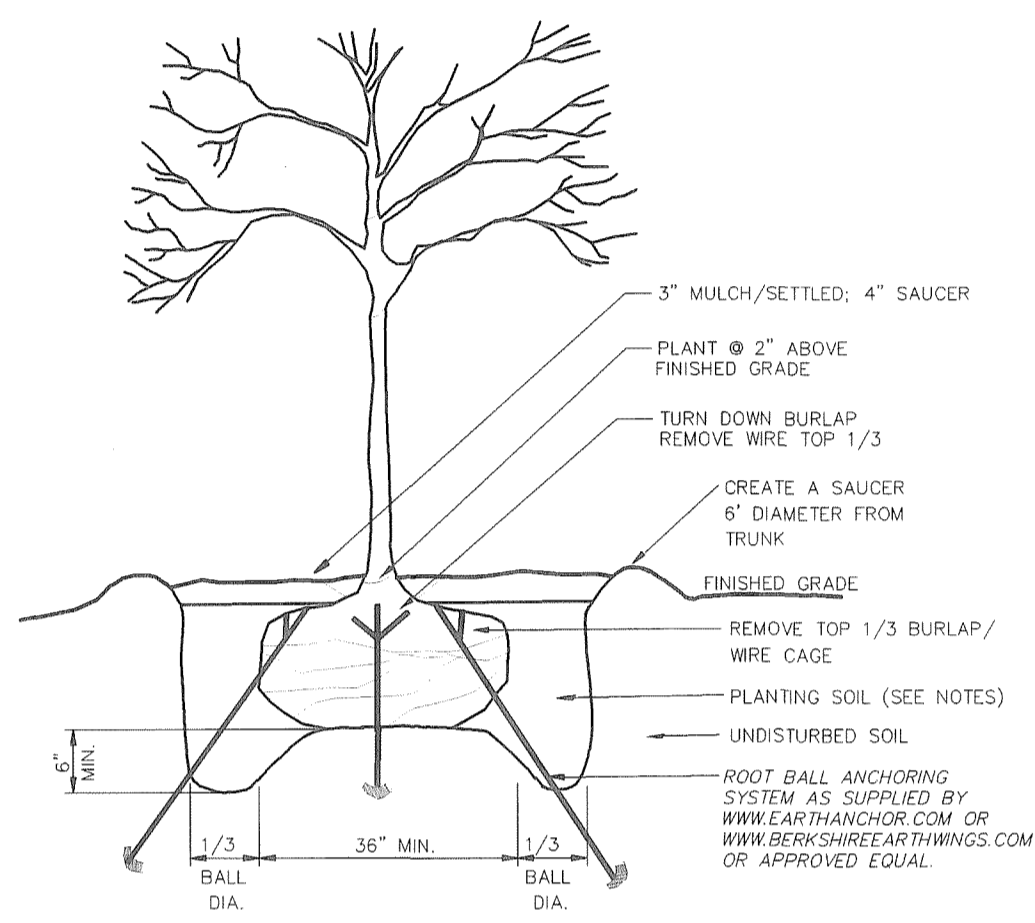
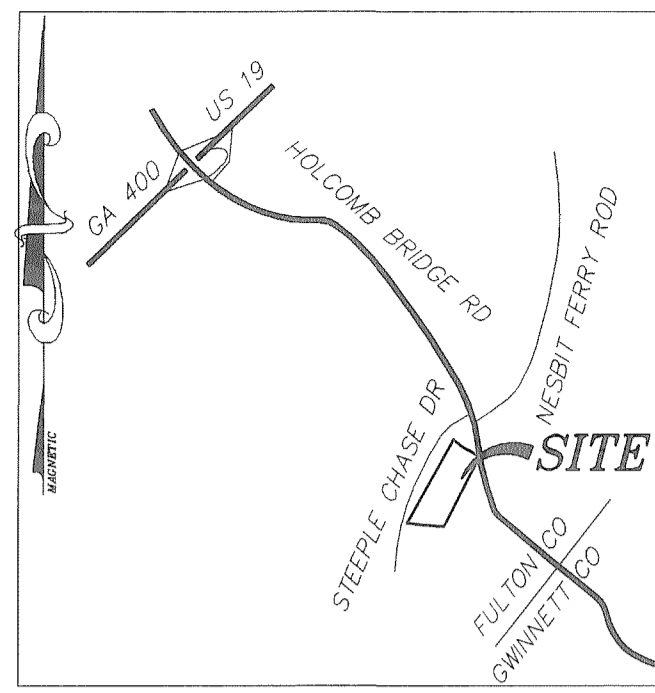
SCALE: AS SHOWN

DATE: 04/05/10

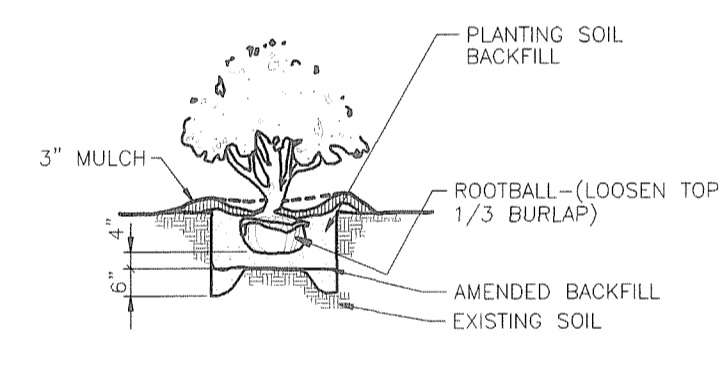
PROJECT: FA 10-003

SHEET

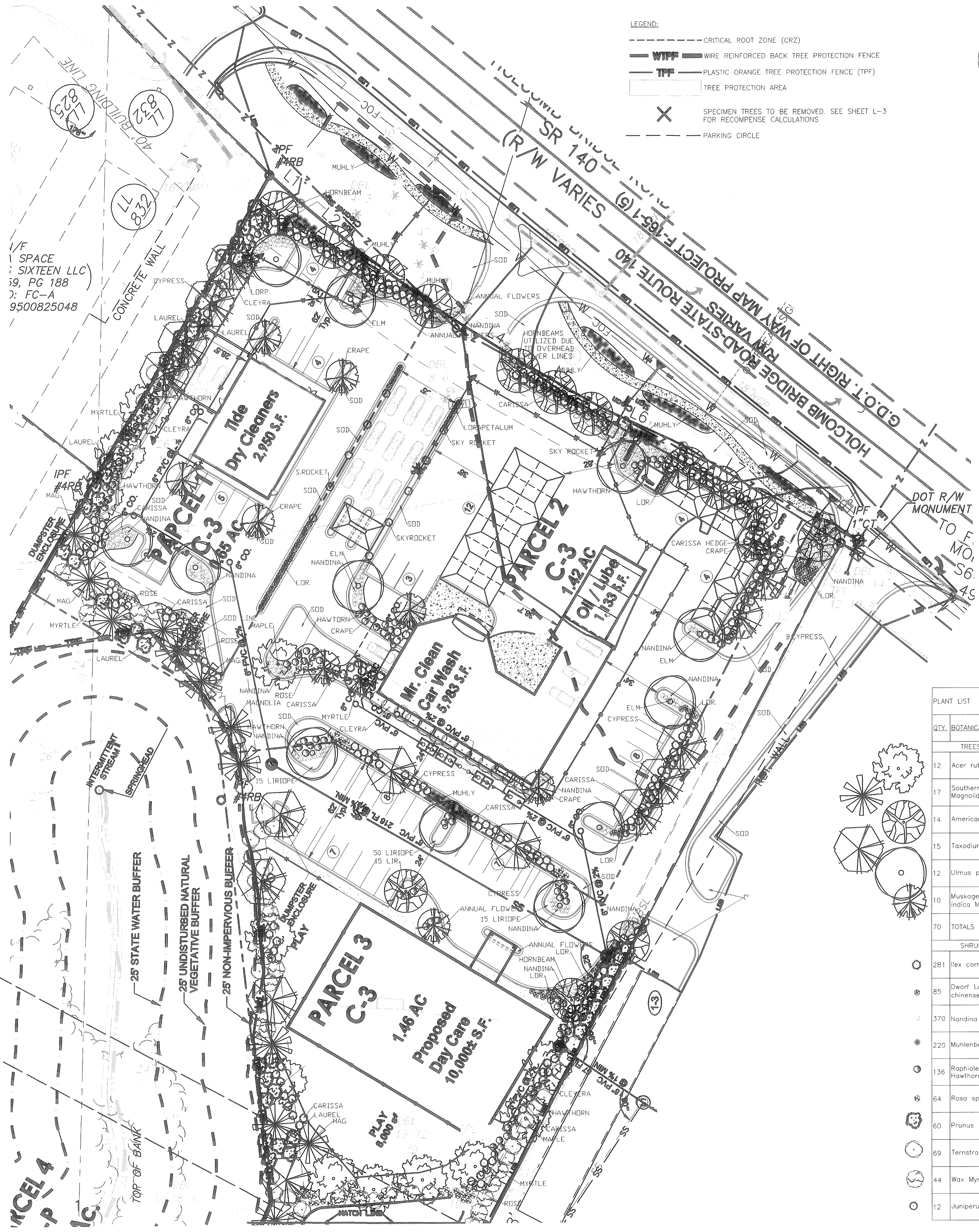
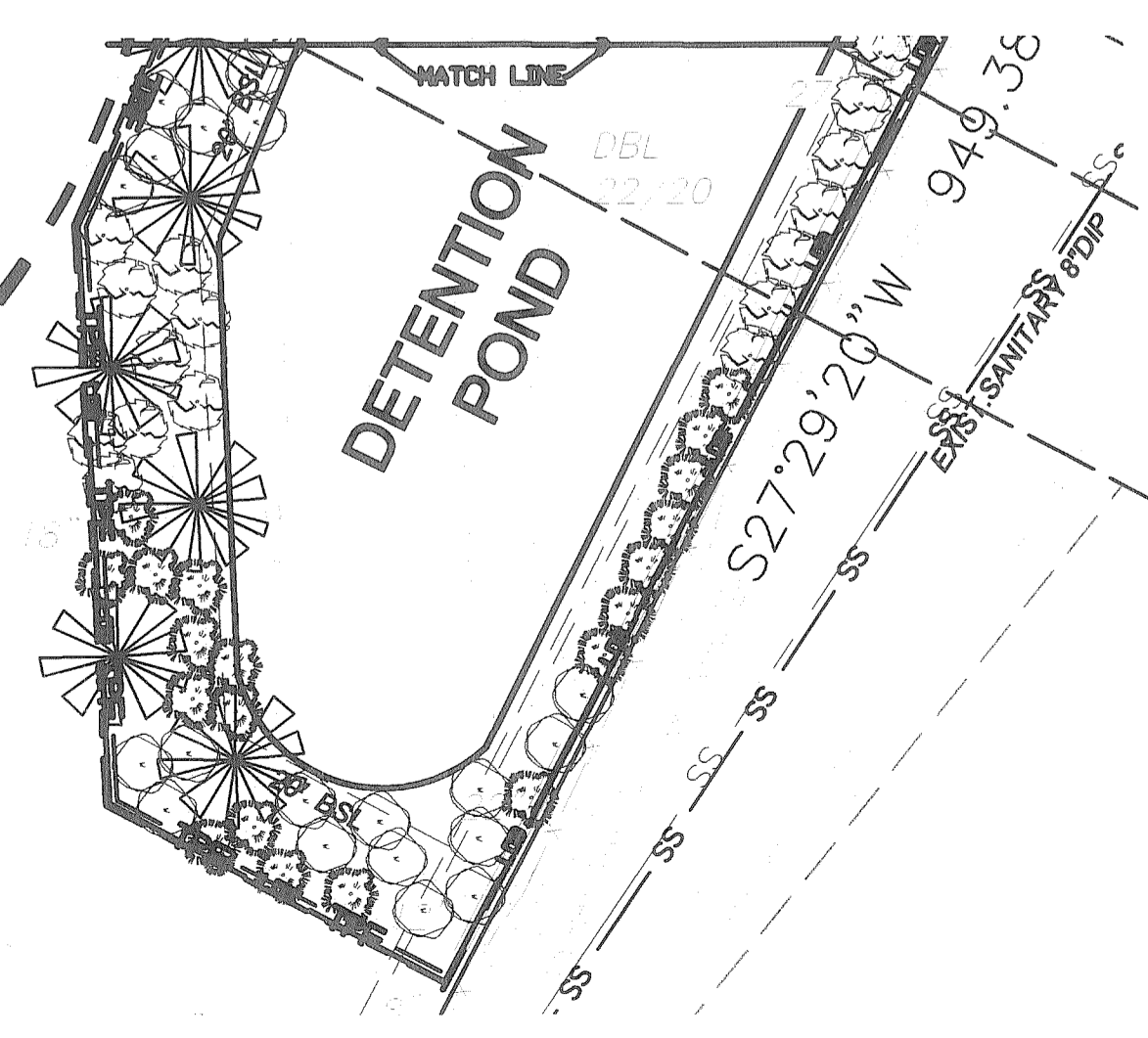
L-1
SHEET 1 OF 2



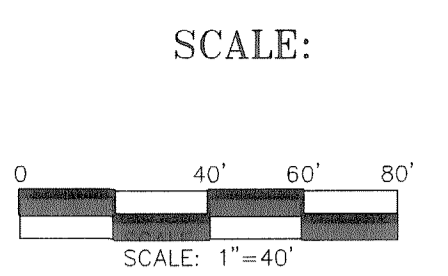
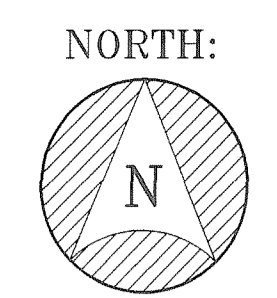
TREE ANCHOR DETAIL
NOT TO SCALE



SHRUB PLANTING
NOT TO SCALE



- LEGEND:**
- CRITICAL ROOT ZONE (CRZ)
 - WIFF --- WIRE REINFORCED BACK TREE PROTECTION FENCE
 - TPF --- PLASTIC ORANGE TREE PROTECTION FENCE (TPF)
 - TREE PROTECTION AREA
 - X SPECIMEN TREES TO BE REMOVED. SEE SHEET L-3 FOR RECOMPENSE CALCULATIONS
 - PARKING CIRCLE



ENTIRE SITE DENSITY FACTOR (SDF) CALCULATIONS:
 SDF REQUIREMENT = 30 UNITS/ACRE
 SITE = 9.71ac
 SDF = 9.71ac x 30u
 SDF = 291.3u REQUIRED 8,003 EDF COMPLIES

ENTIRE SITE EXISTING DENSITY FACTOR (EDF):
 EDF = 8,003u (SEE EDF CHART)

ENTIRE SITE REPLACEMENT DENSITY FACTOR (EDF) CALCULATIONS:
 RDF = SDF - EDF
 RDF = 291.6u - 8,003u
 THE EDF (8,003u) EXCEEDS THE SDF (291.6u), COMPLIES

ENTIRE SITE SPECIMEN TREES:
 Specimen trees as follows:
 41.7u required of 47 trees - 56 TREES OF 4" CALIPER UTILIZED ACROSS THE SITE AS SPECIMEN TREE RECOMPENSE

DAY CARE 5' PERIMETER LS
 A COMBINATION OF EVERGREEN SCREENING WAX MYRTLES, CLEYERA, ENGLISH LAUREL AND EVERGREEN TREES UTILIZED TO SCREEN PLAY AREAS & DETENTION.

DAY CARE PARKING LOT TREES CALCULATIONS:
 FOR PARKING LOTS FOR 20 OR MORE SPACES
 EACH TREE NO MORE THAN 90' FROM ANY PARKING SPACE
 NO LESS THAN 10% OF THE INTERIOR OF A PARKING LOT SHALL BE LANDSCAPED.
 TOTAL INTERIOR PARKING AREA: 5,517SF
 1,385sf OF LANDSCAPE AREA PROPOSED OR 25%

TIDE PERIMETER LS
 1 TREE AND 10 SHRUBS / 35'
 NORTH/ROADWAY 10': 118'/35 = 4TR + 40 SHRUBS
 WEST PL 267'/35 = 8 TR + 80 SHRUBS
 SOUTH PL 118'/35 = 3 TR + 30 SHRUBS

TIDE PARKING LOT TREES CALCULATIONS:
 FOR PARKING LOTS FOR 20 OR MORE SPACES
 EACH TREE NO MORE THAN 90' FROM ANY PARKING SPACE
 NO LESS THAN 10% OF THE INTERIOR OF A PARKING LOT SHALL BE LANDSCAPED.
 TOTAL INTERIOR PARKING AREA: 4,720sf
 1,405sf OF LANDSCAPE AREA PROPOSED OR 29%

MR. CLEAN PERIMETER LS
 1 TREE AND 10 SHRUBS / 35'
 NORTH/ROADWAY 10': 237'/35 = 7TR + 70 SHRUBS
 EAST PL 158'/35 = 5 TR + 50 SHRUBS

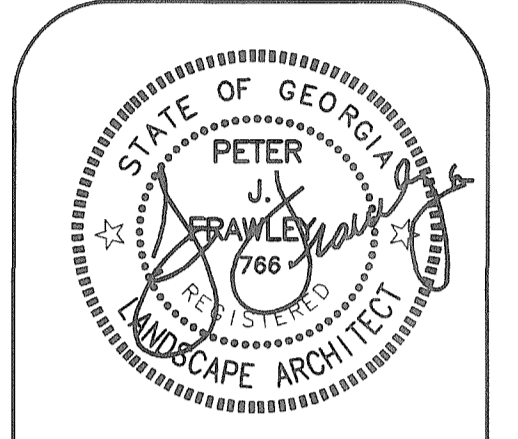
MR. CLEAN PARKING LOT TREES CALCULATIONS:
 FOR PARKING LOTS FOR 20 OR MORE SPACES
 EACH TREE NO MORE THAN 90' FROM ANY PARKING SPACE
 NO LESS THAN 10% OF THE INTERIOR OF A PARKING LOT SHALL BE LANDSCAPED.
 TOTAL INTERIOR PARKING AREA: 3,768sf
 1,091sf OF LANDSCAPE AREA PROPOSED OR 29%

PLANT LIST

QTY.	BOTANICAL NAME - COMMON NAME	MIN. SIZE	GENUS %	QNTL.	USE
TREES					
12	Acer rubrum 'Red Sunset' - Red Maple	4" CAL.	17%	B&B	LS/SPECIMEN RECOMPENSE
17	Southern Magnolia Braken Brown Beauty - Magnolia grandiflora	4" CAL.	24%	B&B	LS/SPECIMEN RECOMPENSE
14	American Hornbeam - Carpinus caroliniana	3" CAL.	20%	B&B	STREET TREES
15	Taxodium distichum - Bald Cypress	4" CAL.	21%	B&B	LS/SPECIMEN RECOMPENSE
12	Ulmus parvifolia - Lacebark Elm	4" CAL.	17%	B&B	PARKING LOT
10	Musigoepe Craple Myrtle - Lagerstroemia indica Multi trunk 1" ea. 3-5 trunks	1" CAL.	0%	B&B	ACCENT
70	TOTALS		100%		
SHRUBS					
281	Ilex cornuta 'Carissa' - Carissa Holly	N/A		3 GAL	
85	Dwarf Lorapetalum - Lorapetalum chinense rubrum 'Ruby'	N/A		3 GAL	
370	Nandina domestica 'Harbor Dwarf'	N/A		1 GAL	
220	Muhlenbergia capillaris - Muhly Grass	N/A		3 GAL	
136	Raphiolepis indica - Dwarf Indian Hawthorn	N/A		3 GAL	
64	Rosa spp. - Home Run Rose	N/A		3 GAL	
60	Prunus laurocerasus - English Laurel	N/A		7 GAL	
69	Ternstroemia gymnanthera - Cleyera	N/A		7 GAL	
44	Wax Myrtle - Myrica cerifera	N/A		7 GAL	
12	Juniperus scopulorum - Skyrocket Juniper	N/A		6' HT.	

REVISIONS:

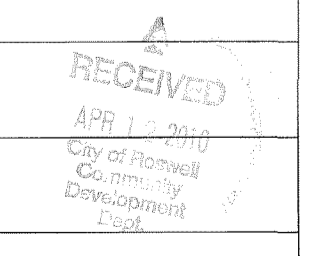
DATE	#
04/12/10	#1
--	--
--	--
--	--
--	--
--	--
--	--

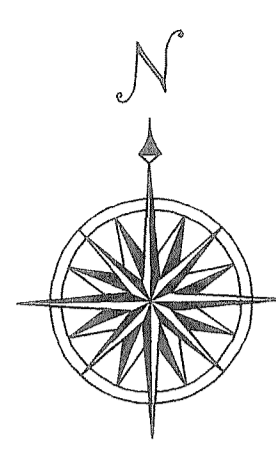
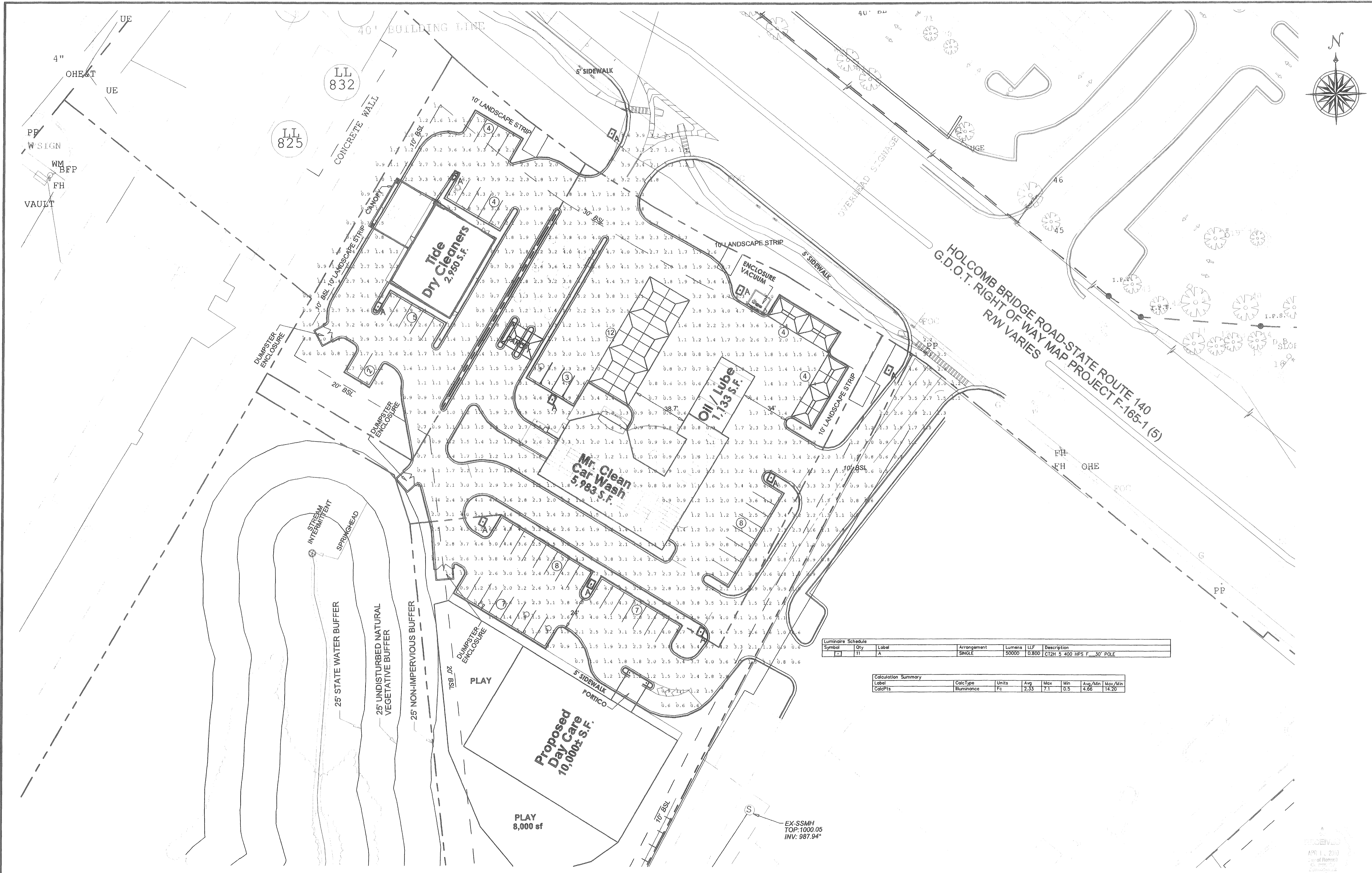


FRAWLEY ASSOCIATES, LLC.
 LANDSCAPE ARCHITECTS
 675 SEMINOLE AVE (SUITE 101)
 ATLANTA, GA 30307 (404) 874-5091
 landscape@frawleyassociates.com
 www.frawleyassociates.com

TIDE/MR. CLEAN/DAYCARE
 HOLCOMB BRIDGE
 ROSWELL, GEORGIA

TREE RELACEMENT/LANDSCAPE PLAN
 SCALE: AS SHOWN
 DATE: 04/05/10
 PROJECT: FA 10-003
 SHEET
L-2
 SHEET 2 OF 2

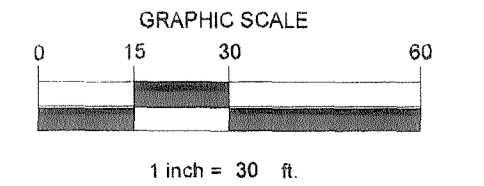




Symbol	Qty	Label	Arrangement	Lumens	LLF	Description
⊙	11	A	SINGLE	50000	0.800	CT2H 5 400 HPS F 30' POLE

Label	Calc Type	Units	Avg	Max	Min	Avg Alln	Max/Min
CalcPts	Illuminance	Fc	2.33	7.1	0.5	4.86	14.20

1 Site Lighting Plan
 SP 1" = 30'



BAR BELOW IS 1" LONG FOR SCALES SHOWN ON THIS SHEET. IF NOT 1" LONG ON THIS SHEET, ADJUST SCALES ACCORDINGLY.

THE CONTRACTOR MUST CALL THE UTILITIES PROTECTION CENTER FOUR DAYS BEFORE ANY EXCAVATION.

COLOR CODES FOR UTILITY LOCATING

RED	ELECTRIC
YELLOW	GAS-OIL
ORANGE	TELEPHONE/CATV
BLUE	WATER
GREEN	SEWER

OVERHEAD UNDERGROUND

IF YOU DIG GEORGIA... CALL US FIRST!
 1-800-282-7411
 770-623-4344
 (4780) 241 AREA (113)
 UTILITIES PROTECTION CENTER
 IT'S THE LAW

Rev. #	Date	Description
1		

Agile Pursuits, Inc.
 1845-Satellite Blvd.
 Duluth, GA 30096

Ramco - Gershenson, Inc.
 31500 North Western Hwy., Suite 300
 Farmington Hills, MI 48334

2925 Holcomb Bridge Road
 Roswell, Georgia

Site Lighting Plan

CORE STATES GROUP

4191 Peachtree Hill Road STE 400
 Atlanta, GA 30340
 Phone: (770) 242-6550
 Fax: (770) 242-6960
 info@corestates.com

Job#: AGP-10920MRCL
 Scale: 1" = 30'
 Date: 04-12-10
 Drawn By: AEN
 Checked By: RLG

Documents prepared by this firm are to be used only for the specific project and specific use for which they are intended. Any use for any other party, without the express, written consent of the firm, is strictly prohibited. The user assumes all liability for any use other than that specifically intended, user will hold the firm harmless from all claims and losses.

