

LEGEND:

- L.L. Land Lot Line
- POB Point of Beginning
- POC Point of Commencement
- 10' Permanent Easement
- 20' Temporary Construction Easement

TRACT - SVA9
 N/F - LEONARD G JR & ANNE R BRANAN
 TAX ID: 12-2201-0501-012-7

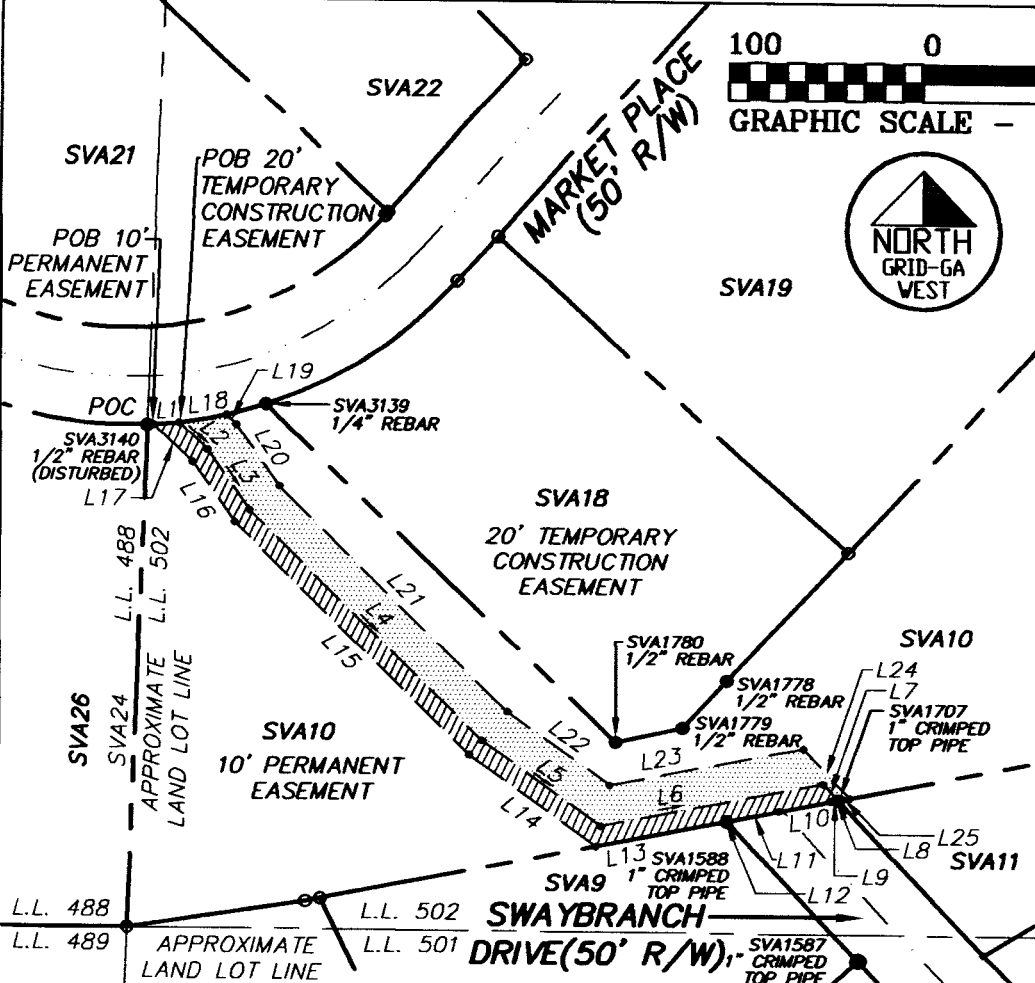
TRACT - SVA10
 N/F - WILFRED T. HODGES
 TAX ID: 12-2190-0502-059-0

TRACT - SVA11
 N/F - MICHAEL M. MACKE
 TAX ID: 12-2201-0501-011-9

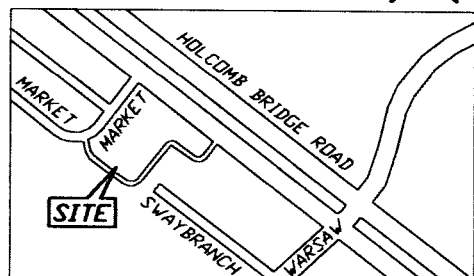
TRACT - SVA18
 N/F - PEACH STATE PROPERTIES INC
 TAX ID: 12-2194-0502-005-9

* From POC (10' Permanent Easement):
 Proceed along a curve to the left having a radius of 228.56' and an arc length of 3.40 feet, said curve being subtended by a chord bearing of N 87°12'41"E for a distance of 3.40 feet. POC is a point located at the intersection of the southerly right-of-way line of Market Place (50' R/W) and the land lot line common to Land Lots 488 and 502.

* From POC (20' Temporary Construction Easement):
 Proceed along a curve to the left having a radius of 228.56' and an arc length of 16.77 feet, said curve being subtended by a chord bearing of N 85°31'43"E for a distance of 16.77 feet to a point. POC is a point located at the intersection of the southerly right-of-way line of Market Place (50' R/W) and the land lot line common to Land Lots 488 and 502.



10' PERMANENT EASEMENT
 AREA= 0.10 ACRES
 OR 4,356 SQUARE FEET
 20' TEMPORARY
 CONSTRUCTION EASEMENT
 AREA = 0.19 ACRES
 OR 8,162 SQUARE FEET



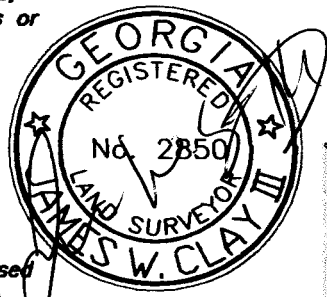
LOCATION MAP - NOT TO SCALE

The survey shown hereon was prepared without the benefit of an abstract of title; therefore, the undersigned and LandAir Surveying Company, make no guarantees or representations regarding information shown hereon pertaining to easements, right-of-way, setback lines, agreements, reservations, and other similar matters.

This plat is for the benefit of the parties in the title block - any use by third parties is at their own risk. LandAir Surveying Company, will not accept any responsibility of liability for the use of this survey by anyone other than the person, or persons, named in the title block.

This is to certify that this survey was made under my supervision and is a true representation of the land surveyed. The field data upon which this survey is based has a precision of one foot in N/A feet and an angular error of N/A per angle point, and was adjusted using Least Squares. Angular and linear measurements were made using a Topcon-303 electronic total station. The data on this survey has been calculated for closure and is found to exceed one foot in 42,903 feet.

James W. Clay III
 James W. Clay III Georgia Registered Land Surveyor #2850



LANDAIR

SURVEYING COMPANY
 70 BOULDERBROOK CIRCLE, BLDG 100
 SUITE 100, LAWRENCEVILLE, GA 30045
 (770) 513-4645 FAX (770) 513-8128

EASEMENT EXHIBIT:
CITY OF ROSWELL

LAND LOT 502 OF THE 1st DISTRICT, 2nd SECTION
 CITY OF ROSWELL, FULTON COUNTY, GEORGIA

Project No. J-09S-115	No.	Revision	Date
Design By: LAS	1.	Revised Easements	11/10/09
Drawn By: SWC			
Checked By: JWC			
Date: 08/11/09			
Scale: 1" = 100'			

Legal Description (10' Permanent Easement)

All that tract or parcel of land lying in and being part of Land Lot 502 of the 1st District, 2nd Section, City of Roswell, Fulton County, Georgia which is more particularly described as follows:

To find the TRUE POINT OF BEGINNING commence at a point located at the intersection of the southerly right-of-way line of Market Place (50' R/W) and the land lot line common to Land Lots 488 and 502; THENCE leaving said intersection and land lot line, proceed along said right-of-way line of Market Place along a 228.56' radius curve turning to the left for an arc distance of 3.40 feet, said curve being subtended by a chord bearing of North 87 degrees 12 minutes 41 seconds East for a distance of 3.40 feet to a point, said point being the TRUE POINT OF BEGINNING.

From the TRUE POINT OF BEGINNING as thus established, continue along said right-of-way line of Market Place along a 228.56' radius turning to the left for an arc distance of 13.37 feet, said curve being subtended by a chord bearing of North 85 degrees 06 minutes 03 seconds East for a distance of 13.37 feet to a point; THENCE leaving said right-of-way line of Market Place proceed South 46 degrees 28 minutes 48 seconds East for a distance of 19.88 feet to a point; THENCE South 34 degrees 45 minutes 38 seconds East for a distance of 38.84 feet to a point; THENCE South 44 degrees 49 minutes 33 seconds East for a distance of 171.58 feet to a point; THENCE South 54 degrees 13 minutes 23 seconds East for a distance of 75.94 feet to a point; THENCE North 78 degrees 51 minutes 12 seconds East for a distance of 117.05 feet to a point; THENCE South 42 degrees 52 minutes 17 seconds East for a distance of 11.66 feet to a point lying on the northwesterly right-of-way line of Swaybranch Drive (50' R/W); THENCE proceed along said right-of-way line of Swaybranch Drive South 78 degrees 44 minutes 52 seconds West for a distance of 0.39 feet to a point; THENCE South 78 degrees 46 minutes 24 seconds West for a distance of 3.47 feet to a point; THENCE South 78 degrees 46 minutes 18 seconds West for a distance of 27.38 feet to a point; THENCE South 78 degrees 46 minutes 18 seconds West for a distance of 27.48 feet to a point lying on the right-of-way intersection of said northwesterly right-of-way line of Swaybranch Drive and the southwesterly right-of-way line of said Swaybranch Drive; THENCE leaving said right-of-way intersection and both described right-of-ways, proceed South 78 degrees 46 minutes 59 seconds West for a distance of 0.24 feet to a 1" crimped top pipe found; THENCE South 78 degrees 51 minutes 12 seconds West for a distance of 68.56 feet to a point; THENCE North 54 degrees 13 minutes 23 seconds West for a distance of 81.11 feet to a point; THENCE North 44 degrees 49 minutes 33 seconds West for a distance of 173.28 feet to a point; THENCE North 34 degrees 45 minutes 38 seconds West for a distance of 38.70 feet to a point; THENCE North 46 degrees 28 minutes 48 seconds West for a distance of 27.73 feet to a point, said point being the TRUE POINT OF BEGINNING.

Legal Description (20' Temporary Construction Easement)

All that tract or parcel of land lying in and being part of Land Lot 502 of the 1st District, 2nd Section, City of Roswell, Fulton County, Georgia which is more particularly described as follows:

To find the TRUE POINT OF BEGINNING commence at a point located at the intersection of the southerly right-of-way line of Market Place (50' R/W) and the land lot line common to Land Lots 488 and 502; THENCE leaving said intersection and land lot line, proceed along said right-of-way line of Market Place along a 228.56' radius curve turning to the left for an arc distance of 16.77 feet, said curve being subtended by a chord bearing of North 85 degrees 31 minutes 43 seconds East for a distance of 16.77 feet to a point, said point being the TRUE POINT OF BEGINNING.

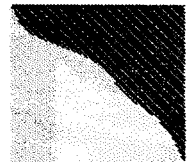
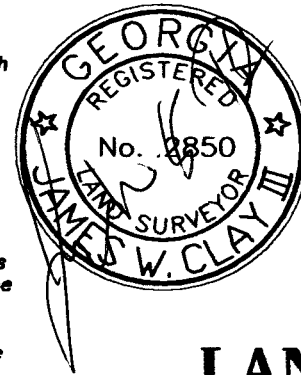
From the TRUE POINT OF BEGINNING as thus established, continue along said right-of-way line of Market Place along a 228.56' radius curve turning to the left for an arc distance of 24.98 feet, said curve being subtended by a chord bearing of North 80 degrees 17 minutes 38 seconds East for a distance of 24.97 feet to a point; THENCE leaving said right-of-way line of Market Place proceed South 46 degrees 28 minutes 48 seconds East for a distance of 6.99 feet to a point; THENCE South 34 degrees 45 minutes 38 seconds East for a distance of 39.14 feet to a point; THENCE South 44 degrees 49 minutes 33 seconds East for a distance of 168.17 feet to a point; THENCE South 54 degrees 13 minutes 23 seconds East for a distance of 65.62 feet to a point; THENCE North 78 degrees 51 minutes 12 seconds East for a distance of 101.89 feet to a point; THENCE South 42 degrees 52 minutes 17 seconds East for a distance of 35.17 feet to a point; THENCE South 78 degrees 43 minutes 51 seconds West for a distance of 5.87 feet to a point lying on the northwesterly right-of-way line of Swaybranch Drive (50' R/W); THENCE leaving said right-of-way line of Swaybranch Drive proceed North 42 degrees 52 minutes 17 seconds West for a distance of 11.66 feet to a point; THENCE South 78 degrees 51 minutes 12 seconds West for a distance of 117.05 feet to a point; THENCE North 54 degrees 13 minutes 23 seconds West for a distance of 75.94 feet to a point; THENCE North 44 degrees 49 minutes 33 seconds West for a distance of 171.58 feet to a point; THENCE North 34 degrees 45 minutes 38 seconds West for a distance of 38.84 feet to a point; THENCE North 46 degrees 28 minutes 48 seconds West for a distance of 19.88 feet to a point, said point being the TRUE POINT OF BEGINNING.

10' PERMANENT EASEMENT

Course	Bearing	Distance
L1	Rad= 228.56' Chd: N 85°06'03" E	Arc= 13.37' 13.37'
L2	S 46°28'48" E	19.88'
L3	S 34°45'38" E	38.84'
L4	S 44°49'33" E	171.58'
L5	S 54°13'23" E	75.94'
L6	N 78°51'12" E	117.05'
L7	S 42°52'17" E	11.66'
L8	S 78°44'52" W	0.39'
L9	S 78°46'24" W	3.47'
L10	S 78°46'18" W	27.38'
L11	S 78°46'18" W	27.48'
L12	S 78°46'59" W	0.24'
L13	S 78°51'12" W	68.56'
L14	N 54°13'23" W	81.11'
L15	N 44°49'33" W	173.28'
L16	N 34°45'38" W	38.70'
L17	N 46°28'48" W	27.73'

20' TEMPORARY CONSTRUCTION EASEMENT

Course	Bearing	Distance
L18	Rad= 228.56' Chd: N 80°17'38" E	Arc= 24.98' 24.97'
L19	S 46°28'48" E	6.99'
L20	S 34°45'38" E	39.14'
L21	S 44°49'33" E	168.17'
L22	S 54°13'23" E	65.62'
L23	N 78°51'12" E	101.89'
L24	S 42°52'17" E	35.17'
L25	S 78°43'51" W	5.87'
L7	N 42°52'17" W	11.66'
L6	S 78°51'12" W	117.05'
L5	N 54°13'23" W	75.94'
L4	N 44°49'33" W	171.58'
L3	N 34°45'38" W	38.84'
L2	N 46°28'48" W	19.88'



LANDAIR

SURVEYING COMPANY
70 BOULDERBROOK CIRCLE, BLDG 100
SUITE 100, LAWRENCEVILLE, GA 30045
(770) 513-4645 FAX (770) 513-8128

**EASEMENT EXHIBIT:
CITY OF ROSWELL**

LAND LOT 502 OF THE 1st DISTRICT, 2nd SECTION
CITY OF ROSWELL, FULTON COUNTY, GEORGIA

Project No.	J-09S-115	No.	Revision	Date
Design By:	LAS	1.	Revised Easements	11/10/09
Drawn By:	SWC			
Checked By:	JWC			
Date:	08/11/09			
Scale:	1" = 100'			