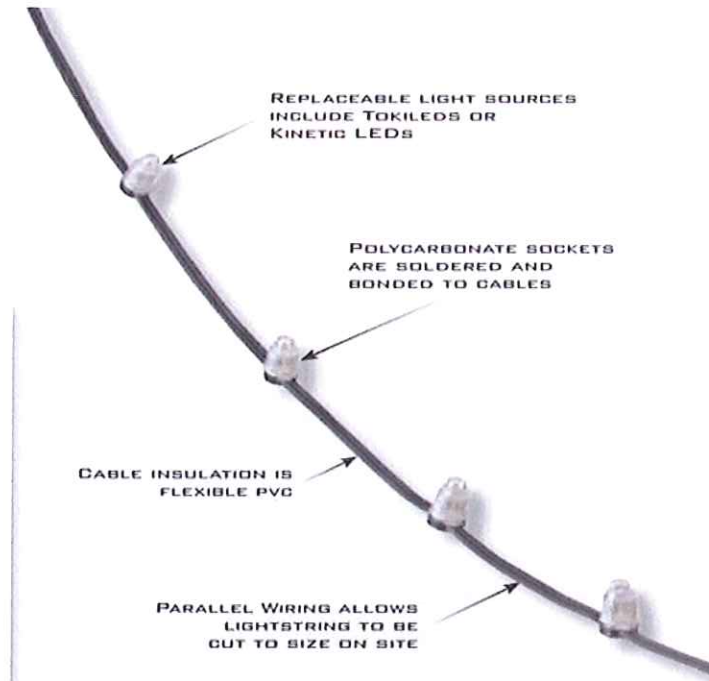
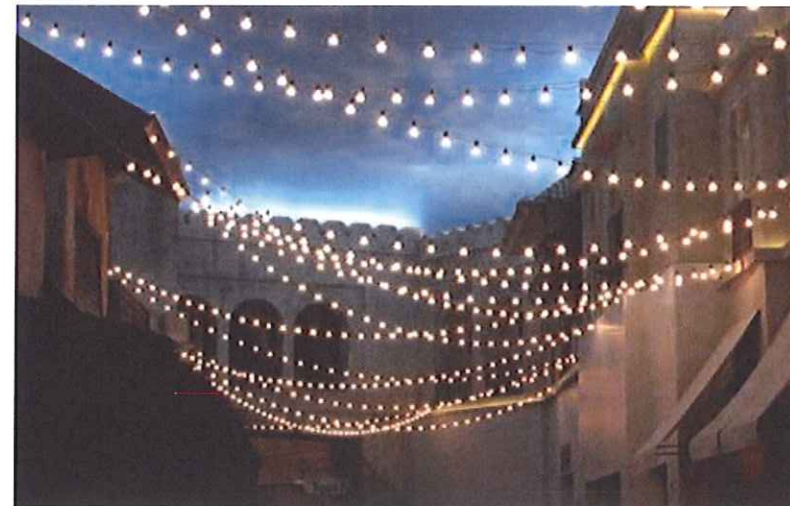


LIGHTING



LED LIGHTSTRINGS
- LOCATED AT TREES LINING THE
MAIN ENTRY ROAD AND AT
OUTDOOR PATIO
- TOKISTAR LIGHTING
WARM WHITE – 2400K, 0.1W/8
VDC



FESTOON
-LOCATED ABOVE FUTURE
OUTDOOR DINING AT
TOWER FEATURE PATIO
-TOKISTAR LIGHTING
WHITE – 3000K, .48W/24 VAC

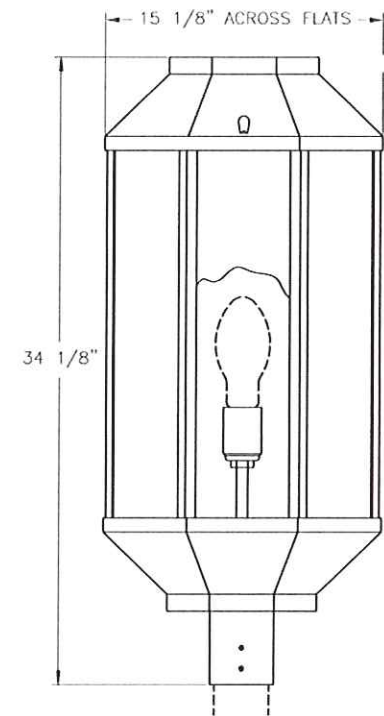


UNDER CANOPY
-TO REPLACE EXISTING RECESSED
CAN LIGHTS THOUGHOUT EXTERIOR
COVERED ARCADE
-OMEGA LIGHTING
8" OPEN REFLECTOR DOWNLIGHT
WHITE - 3000K, 32W PLT



HOLCOMB WOODS
VILLAGE

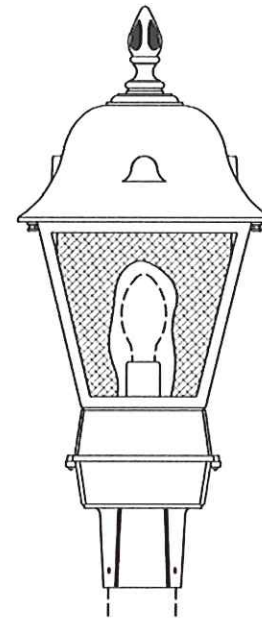
DECORATIVE SCONCE LIGHTING



HANOVER LANTERNS

-AMHERST STYLE

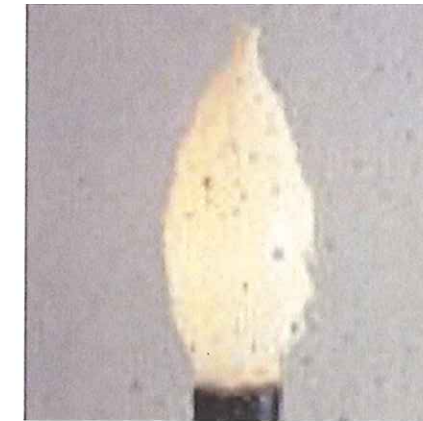
- LOCATED ON ANCHOR TENANT FACADES
- CLEAR SEEDED LENS, RUSTIC BRONZE FINSH
- 150W METAL HALIDE



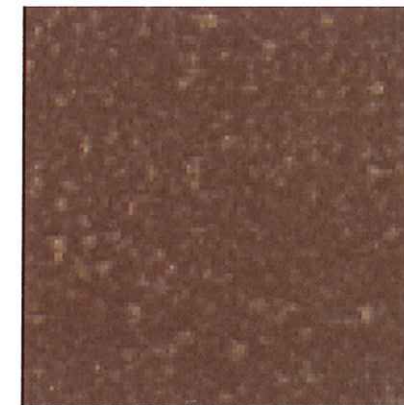
HANOVER LANTERNS

-JEFFERSON STYLE

- LOCATED ON SHOPS FACADES
- CLEAR SEEDED LENS, RUSTIC BRONZE FINSH
- 100W METAL HALIDE



CLEAR SEEDED LENS

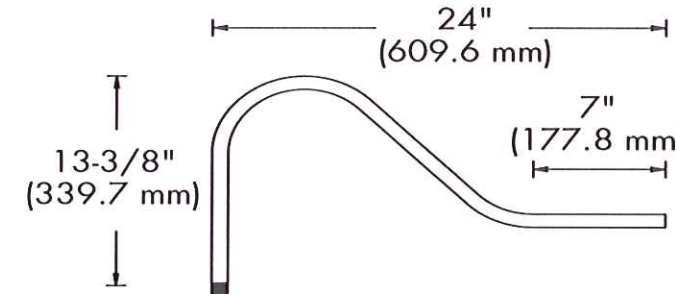
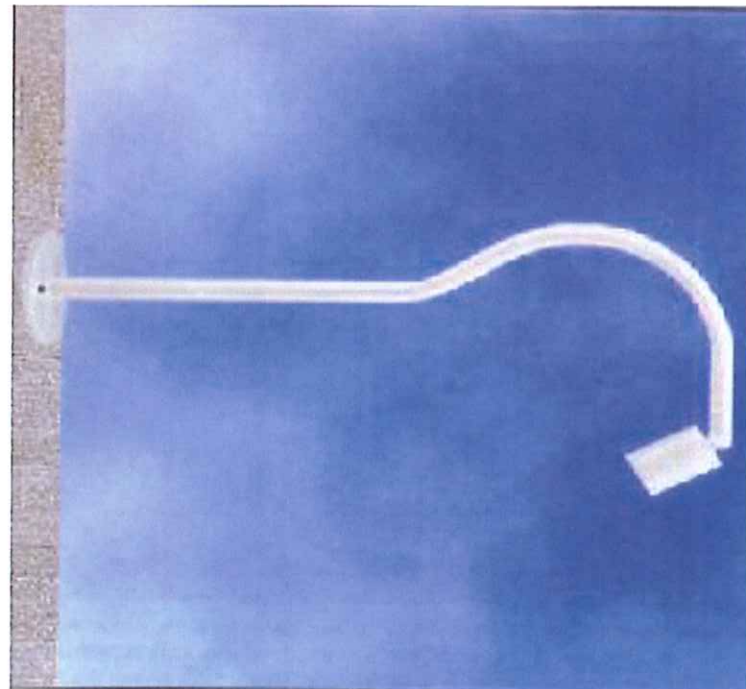


RUSTIC BRONZE FINISH

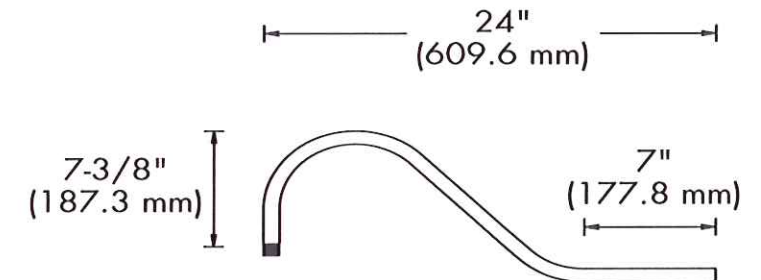


HOLCOMB WOODS
VILLAGE

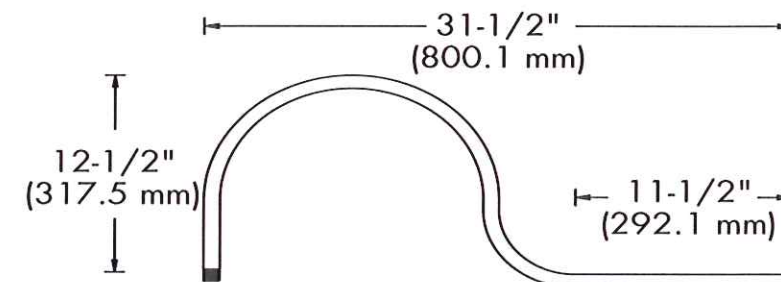
SIGN LIGHTING



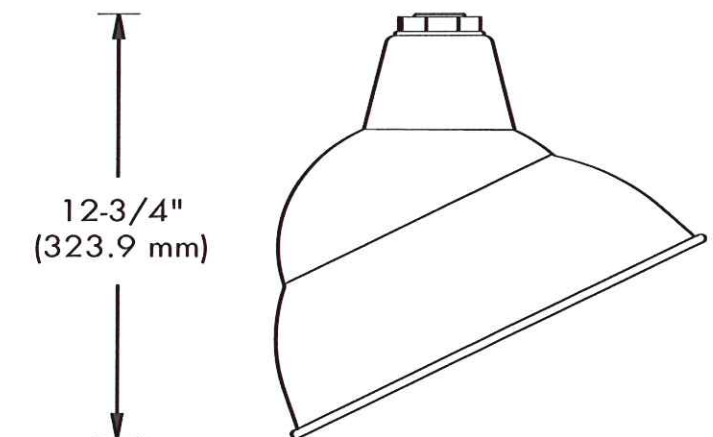
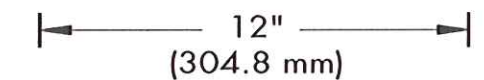
BLGN2



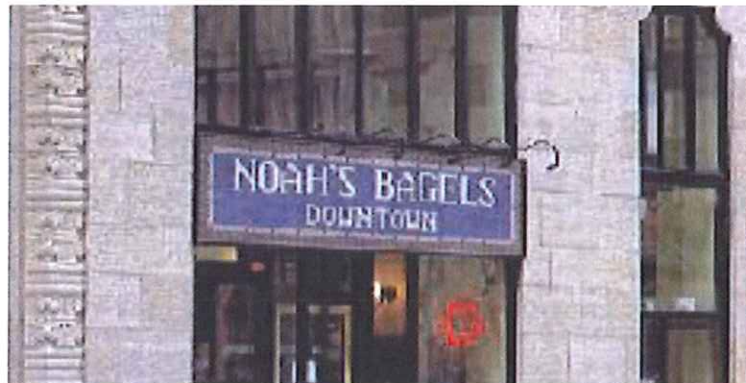
BLGN1



BLGN4



SIGN STAR LIGHTING
- VARIOUS NEW TENANT SIGN
LOCATIONS ON THE BUILDING
-B-K LIGHTING, SIGN STAR STYLE A,
BLACK FINISH, WHITE LAMP – 3500K,
20W/12 V MR-16



GOOSENECK/RLM'S
- VARIOUS NEW TENANT SIGN
LOCATIONS ON THE BUILDING
- DAY-BRITE LIGHTING
BLACK FINISH, WHITE LAMP – 3500K,
42W CFL



HOLCOMB WOODS
VILLAGE