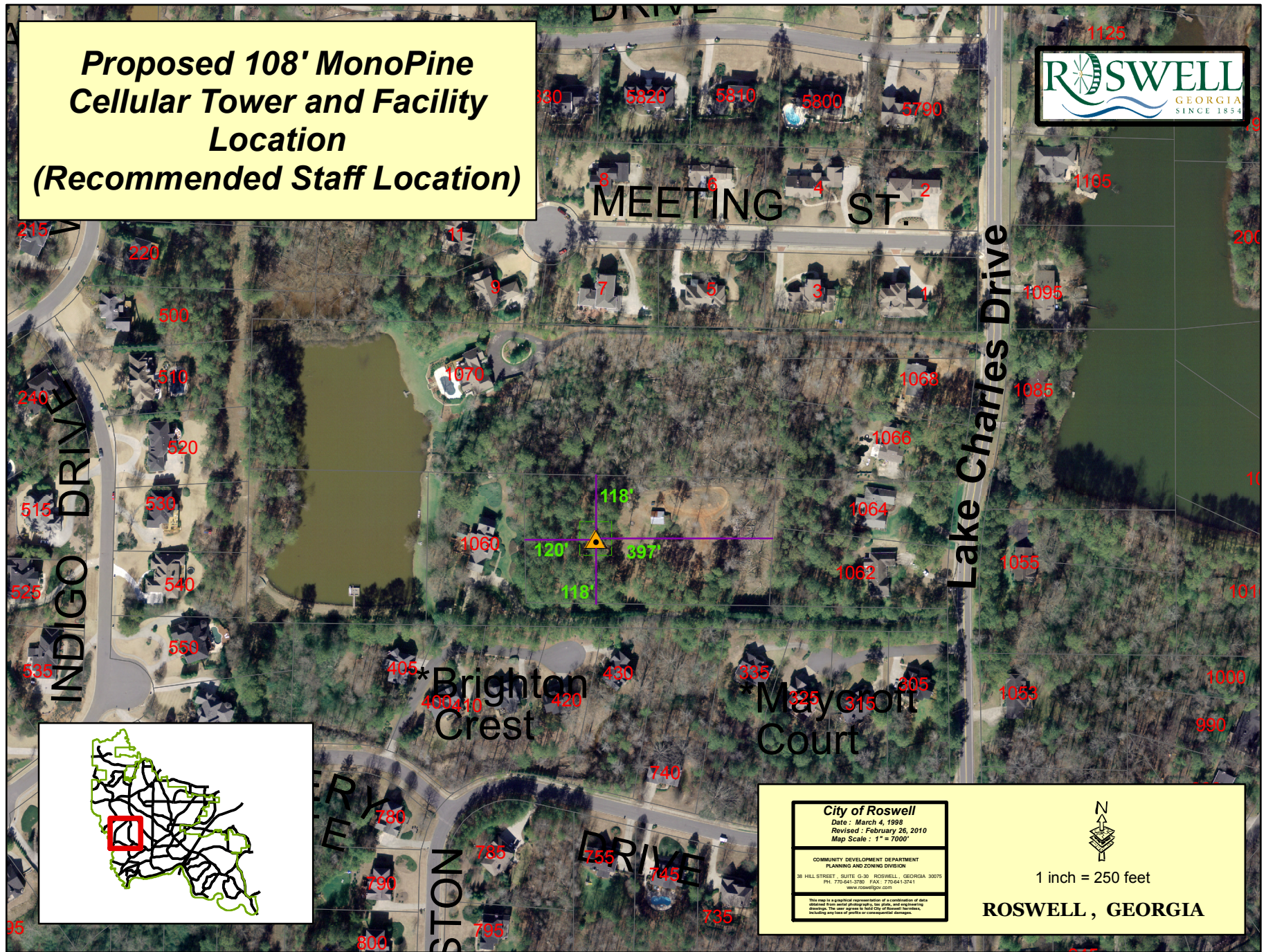


**Proposed 108' MonoPine  
Cellular Tower and Facility  
Location  
(Recommended Staff Location)**



**City of Roswell**  
 Date : March 4, 1998  
 Revised : February 26, 2010  
 Map Scale : 1" = 7000'  
 COMMUNITY DEVELOPMENT DEPARTMENT  
 PLANNING AND ZONING DIVISION  
 38 HILL STREET, SUITE G-30 ROSWELL, GEORGIA 30075  
 PH. 770-641-3780 FAX: 770-641-3741  
 www.ciroswellga.com  
This map is a graphical representation of a compilation of data  
 obtained from aerial photography, tax plats, and engineering  
 drawings. The user agrees to hold City of Roswell harmless  
 including any loss of profits or consequential damages.



1 inch = 250 feet

**ROSWELL, GEORGIA**