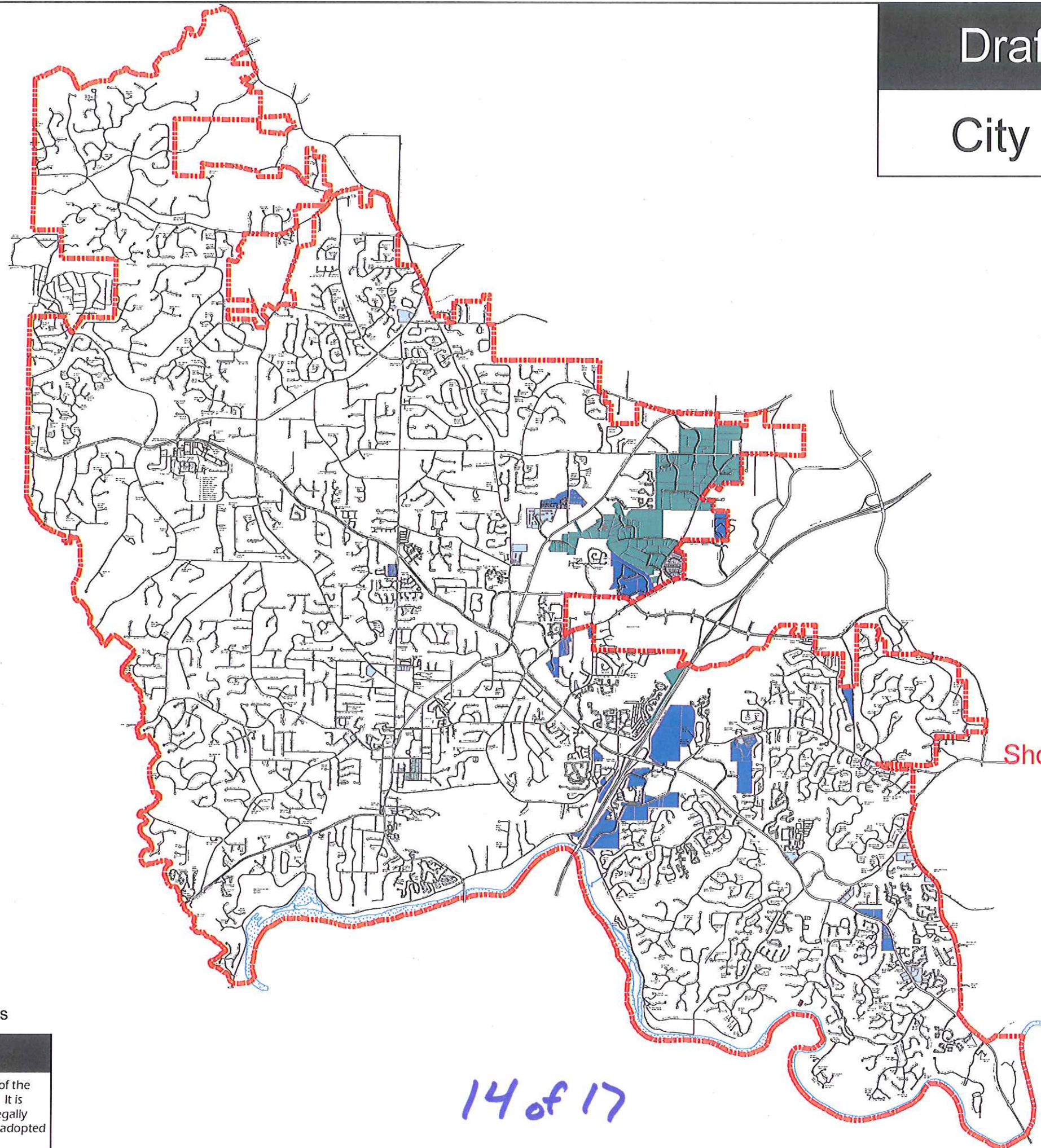


Draft UDC Zoning Map

City of Roswell, Georgia



Legend

UDC Zoning

Residential

- AG-43 - Agricultural
- RS-87 - Single Family Estate (E-1)
- RS-30 - Single Family Estate (E-2)
- RS-18 - Single Family Suburban (R-1)
- RS-12 - Single Family Suburban (R-2)
- RS-9 - Single Family Small Lot
- RS-6 - Single Family Small Lot
- RS-4 - Single Family Small Lot
- R-CC - Residential Cottage Court
- R-TH - Residential Townhouse
- RM-2 - Residential Multi-Family
- RM-3 - Residential Multi-Family
- Planned Residential Development

Corridors & Nodes

- PV - Parkway Village
- RX - Residential Mixed Use
- NX - Neighborhood Mixed Use
- CX - Commercial Mixed Use
- SH - Shopfront Mixed Use
- CC - Commercial Corridor
- CH - Commercial Heavy

Downtown

- DR - Downtown Residential
- DX - Downtown Mixed Use
- DS - Downtown Shopfront
- DH - Downtown House

Employment

- OR - Office Residential
- OP - Office Park
- IX - Industrial Flex
- IL - Light Industrial

Civic & Open Space

- CIV - Civic and Institutional
- REC - Recreation, Parks and Open Space
- CON - Conservation

Overlays

- RC - MRPA River Corridor
- HP - Roswell Historic District
- NC - Neighborhood Conservation District
- City Limits

Height Permitted* (Stories)

*The number of stories permitted on a property is indicated by the number of stories permitted on the property. If no height is indicated on a property, then the maximum number of stories permitted is 3.



0 0.5 1 2 Miles

Draft Date: 12/3/2013

This map is a working draft as part of the creation of the Unified Development Code for the City of Roswell. It is intended for discussion purposes only. It is not a legally binding document and has not been approved or adopted by the City of Roswell Mayor & City Council.

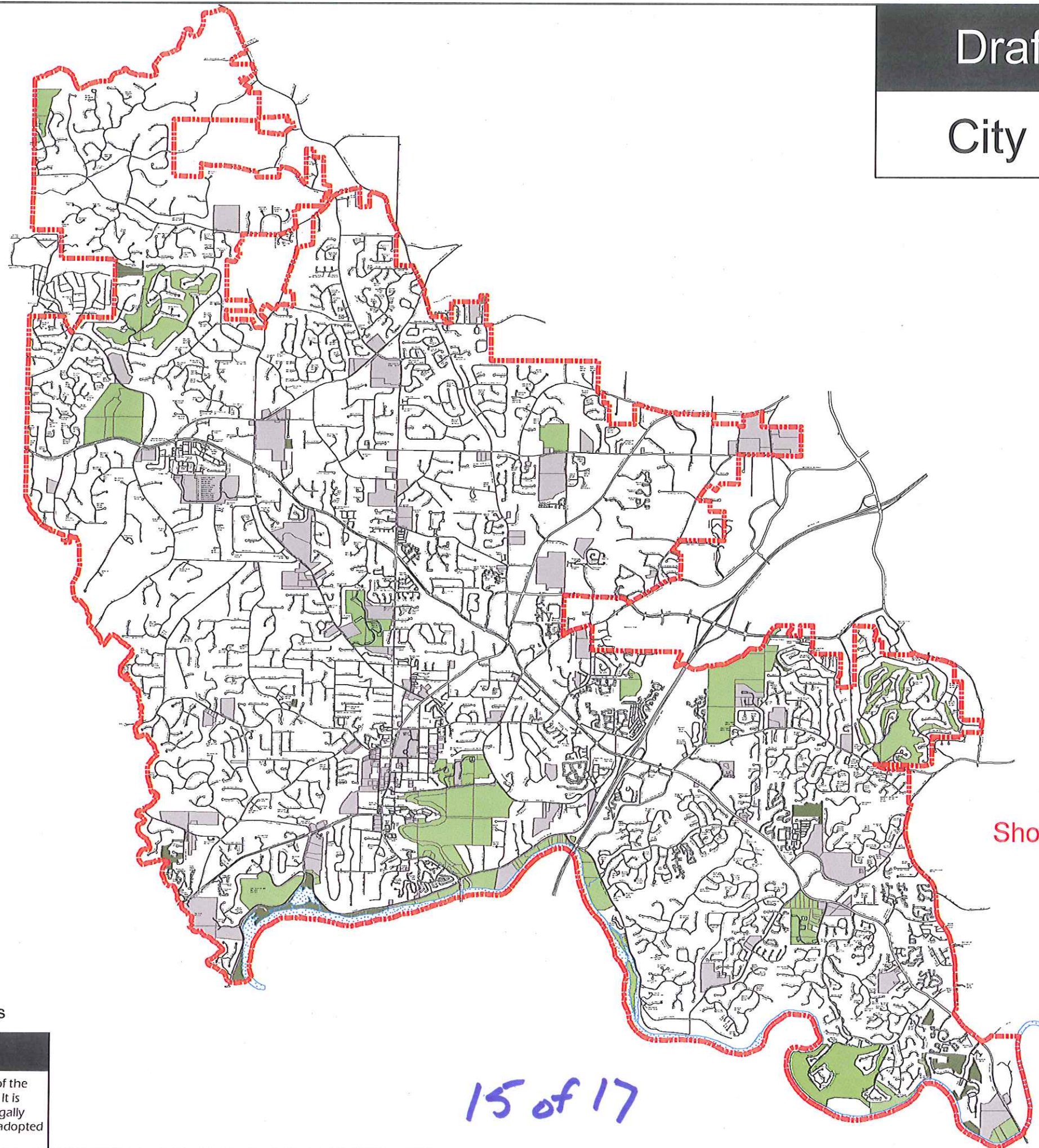
14 of 17

City of Roswell
Community Development Department
Planning & Zoning Division

38 Hill Street Suite G-30 Roswell, Georgia 30075
Phone: 770-641-3774
www.roswellgov.com

Draft UDC Zoning Map

City of Roswell, Georgia



Legend

UDC Zoning

Residential

- AG-43 - Agricultural
- RS-87 - Single Family Estate (E-1)
- RS-30 - Single Family Estate (E-2)
- RS-18 - Single Family Suburban (R-1)
- RS-12 - Single Family Suburban (R-2)
- RS-9 - Single Family Small Lot
- RS-6 - Single Family Small Lot
- RS-4 - Single Family Small Lot
- R-CC - Residential Cottage Court
- R-TH - Residential Townhouse
- RM-2 - Residential Multi-Family
- RM-3 - Residential Multi-Family
- Planned Residential Development

Corridors & Nodes

- PV - Parkway Village
- RX - Residential Mixed Use
- NX - Neighborhood Mixed Use
- CX - Commercial Mixed Use
- SH - Shopfront Mixed Use
- CC - Commercial Corridor
- CH - Commercial Heavy

Downtown

- DR - Downtown Residential
- DX - Downtown Mixed Use
- DS - Downtown Shopfront
- DH - Downtown House

Employment

- OR - Office Residential
- OP - Office Park
- IX - Industrial Flex
- IL - Light Industrial

Civic & Open Space

- CIV - Civic and Institutional
- REC - Recreation, Parks and Open Space
- CON - Conservation

Overlays

- RC - MRP River Corridor
- HP - Roswell Historic District
- NC - Neighborhood Conservation District
- City Limits
- Height Permitted* (Stories)
*The number shown on the map indicates the number of stories permitted on that property. If no height is indicated on a property then the maximum number of stories permitted is 3.

Shown on Map

Draft Date: 12/3/2013

This map is a working draft as part of the creation of the Unified Development Code for the City of Roswell. It is intended for discussion purposes only. It is not a legally binding document and has not been approved or adopted by the City of Roswell Mayor & City Council.

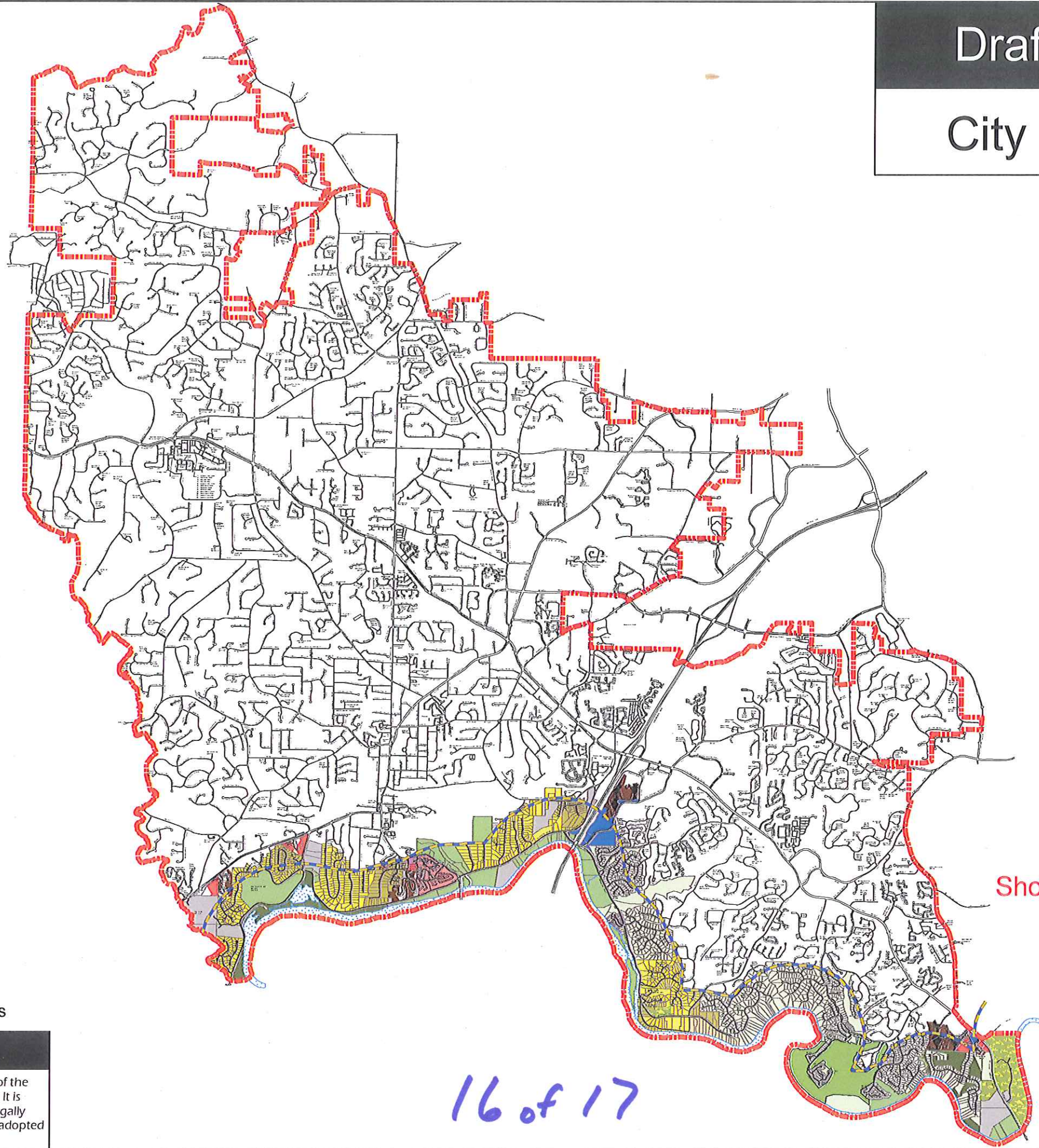
15 of 17

City of Roswell
Community Development Department
Planning & Zoning Division

38 Hill Street Suite G-30 Roswell, Georgia 30075
Phone: 770-641-3774
www.roswellga.gov

Draft UDC Zoning Map

City of Roswell, Georgia



Legend

UDC Zoning

Residential

- AG-43 - Agricultural
- RS-87 - Single Family Estate (E-1)
- RS-30 - Single Family Estate (E-2)
- RS-18 - Single Family Suburban (R-1)
- RS-12 - Single Family Suburban (R-2)
- RS-9 - Single Family Small Lot
- RS-6 - Single Family Small Lot
- RS-4 - Single Family Small Lot
- R-CC - Residential Cottage Court
- R-TH - Residential Townhouse
- RM-2 - Residential Multi-Family
- RM-3 - Residential Multi-Family
- Planned Residential Development

Corridors & Nodes

- PV - Parkway Village
- RX - Residential Mixed Use
- NX - Neighborhood Mixed Use
- CX - Commercial Mixed Use
- SH - Shopfront Mixed Use
- CC - Commercial Corridor
- CH - Commercial Heavy

Downtown

- DR - Downtown Residential
- DX - Downtown Mixed Use
- DS - Downtown Shopfront
- DH - Downtown House

Employment

- OR - Office Residential
- OP - Office Park
- IX - Industrial Flex
- IL - Light Industrial

Civic & Open Space

- CIV - Civic and Institutional
- REC - Recreation, Parks and Open Space
- CON - Conservation

Overlays

- RC - MRPA River Corridor
- HP - Roswell Historic District
- NC - Neighborhood Conservation District
- City Limits
- Height Permitted* (Stories)

*The number shown on the map indicates the number of stories permitted on that property. If no height is indicated on a property then the maximum number of stories permitted is 3.



0 0.5 1 2 Miles

Draft Date: 12/3/2013

This map is a working draft as part of the creation of the Unified Development Code for the City of Roswell. It is intended for discussion purposes only. It is not a legally binding document and has not been approved or adopted by the City of Roswell Mayor & City Council.

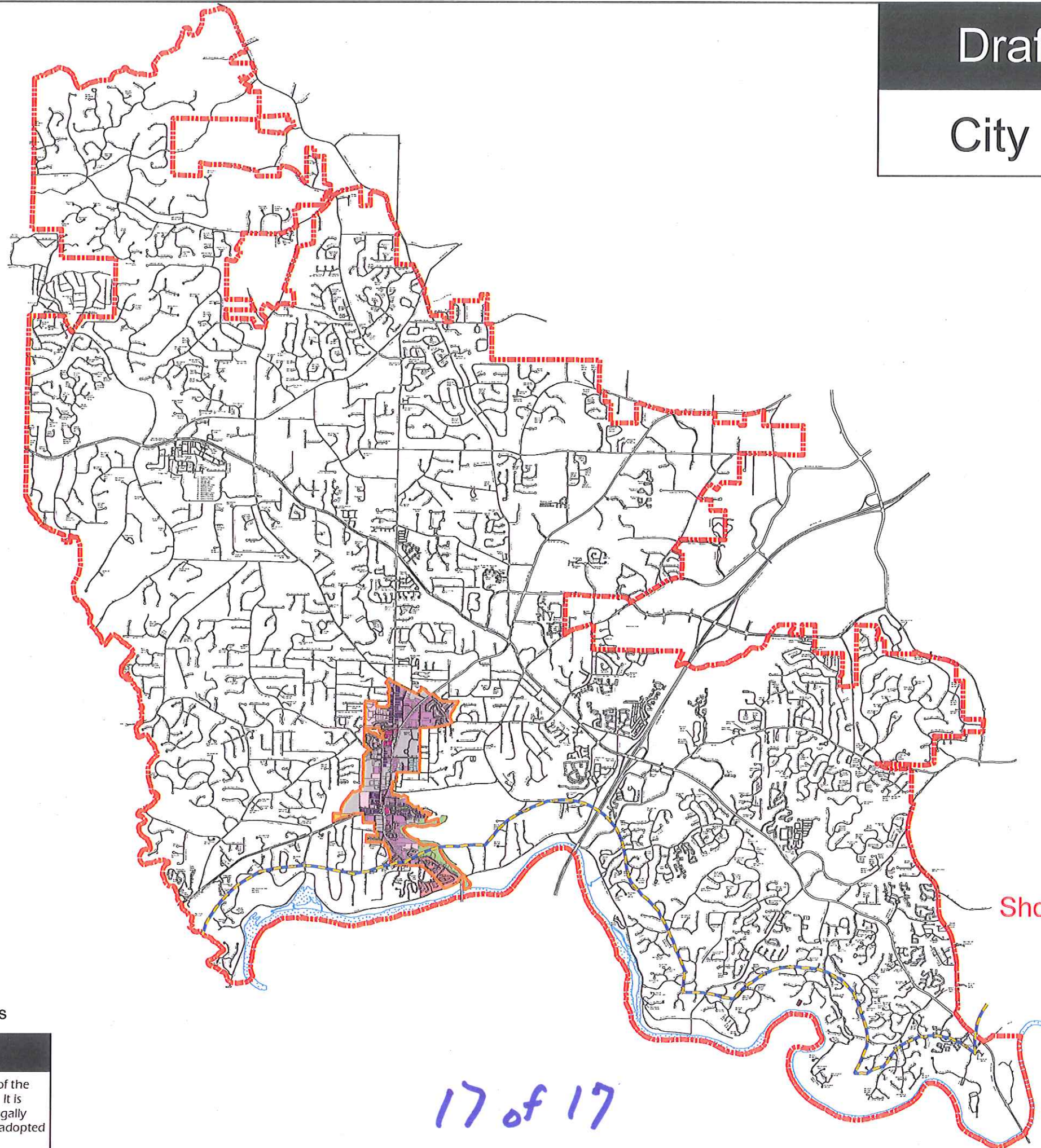
16 of 17

City of Roswell
Community Development Department
Planning & Zoning Division

38 Hill Street Suite G-30 Roswell, Georgia 30075
Phone: 770-641-3774
www.roswellgov.com

Draft UDC Zoning Map

City of Roswell, Georgia



Legend

UDC Zoning

Residential

- AG-43 - Agricultural
- RS-87 - Single Family Estate (E-1)
- RS-30 - Single Family Estate (E-2)
- RS-18 - Single Family Suburban (R-1)
- RS-12 - Single Family Suburban (R-2)
- RS-9 - Single Family Small Lot
- RS-6 - Single Family Small Lot
- RS-4 - Single Family Small Lot
- R-CC - Residential Cottage Court
- R-TH - Residential Townhouse
- RM-2 - Residential Multi-Family
- RM-3 - Residential Multi-Family
- Planned Residential Development

Corridors & Nodes

- PV - Parkway Village
- RX - Residential Mixed Use
- NX - Neighborhood Mixed Use
- CX - Commercial Mixed Use
- SH - Shopfront Mixed Use
- CC - Commercial Corridor
- CH - Commercial Heavy

Downtown

- DR - Downtown Residential
- DX - Downtown Mixed Use
- DS - Downtown Shopfront
- DH - Downtown House

Employment

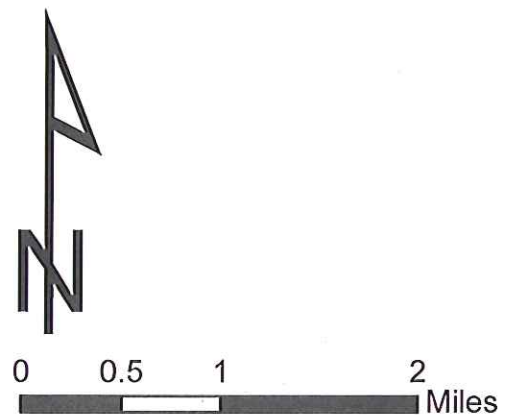
- OR - Office Residential
- OP - Office Park
- IX - Industrial Flex
- IL - Light Industrial

Civic & Open Space

- CIV - Civic and Institutional
- REC - Recreation, Parks and Open Space
- CON - Conservation

Overlays

- RC - MRPA River Corridor
- HP - Roswell Historic District
- NC - Neighborhood Conservation District
- City Limits
- Height Permitted* (Stories)



Draft Date: 12/3/2013

17 of 17

This map is a working draft as part of the creation of the Unified Development Code for the City of Roswell. It is intended for discussion purposes only. It is not a legally binding document and has not been approved or adopted by the City of Roswell Mayor & City Council.

City of Roswell
Community Development Department
Planning & Zoning Division

38 Hill Street Suite G-30 Roswell, Georgia 30075
Phone: 770-641-3774
www.roswellgov.com