

LEGEND: ABBREVIATIONS AND SYMBOLS

A.K.A.	- ALSO KNOWN AS	M.S.L.	- MEAN SEA LEVEL
B.C.	- BACK OF CURB	O/T	- OPEN TOP PIPE
B.L.	- BUILDING SETBACK LINE	PAV'T	- PAVEMENT
B.L.W.	- BUILDING LINE WIDTH	PB	- POWER BOX
BW	- BOTTOM OF WALL (GROUND)	P.O.B.	- POINT OF BEGINNING
C&G	- CURB AND GUTTER	PP	- POWER POLE
C	- CENTERLINE	P	- PROPERTY LINE
CB	- CATCH BASIN	R	- RADIUS OF CURVE
CH	- CHORD	R.B.L.	- REAR BUILDING LINE
C.M.P.	- CORRUGATED METAL PIPE	R.C.P.	- REINFORCED CONCRETE PIPE
C/T	- CRIMP TOP PIPE	R/B	- REINFORCING BAR
D.E.	- DRAINAGE EASEMENT	R/W	- RIGHT OF WAY
DI	- DROP INLET WITH GRATE	S.B.L.	- SIDE BUILDING LINE
DWCB	- DOUBLE WING CB	S.S.	- SANITARY SEWER
EP	- EDGE OF PAVEMENT	S.S.E.	- SANITARY SEWER EASEMENT
FH	- FIRE HYDRANT	SWCB	- SINGLE WING CB
HW	- HEADWALL	TW	- TOP OF WALL
I.P.F.	- IRON PIN FOUND	WM	- WATER METER
I.P.S.	- IRON PIN SET (1/2" R/B)	YI	- YARD INLET (PEDESTAL INLET)
JB	- JUNCTION BOX	—	- STREAM
L	- LENGTH OF CURVE	— F —	- FLOOD LIMITS
L.F.E.	- LOWEST FLOOR ELEVATION	— P —	- POWER LINE
L.L.L.	- LAND LOT LINE	— T —	- TELEPHONE LINE
LP	- LIGHT POLE	— x —	- WIRE FARM FENCE LINE
M.F.E.	- MINIMUM FLOOR ELEVATION	— □ —	- WOOD FENCE LINE
MH	- MANHOLE	— ○ —	- CHAIN LINK FENCE LINE
M.S.L.	- MEAN SEA LEVEL		

REFERENCES:

1. FINAL PLAT OF RIVER LAKE SHORES S/D, UNIT ONE, BY J. PAUL BATES & ASSOCIATES, DATED JANUARY 20, 1969, AS RECORDED IN PLAT BOOK 91, PAGE 111, FULTON COUNTY RECORDS.
2. FINAL PLAT OF RIVER LAKE SHORES S/D, UNIT TWO, BY BATES-LONG & ASSOCIATES, DATED NOVEMBER 15, 1978, AS LAST REVISED DECEMBER 23, 1980, AND RECORDED IN PLAT BOOK 130 PAGE 14, FULTON COUNTY RECORDS.
3. DIVISION PLAT FOR DONALD C. MELCHER, BY BATES-LONG & ASSOCIATES, DATED MARCH 10, 2003, AS RECORDED IN PLAT BOOK 238, PAGE 52, FULTON COUNTY RECORDS.

NOTES:

1. ZONING = R-1 (SINGLE FAMILY RESIDENTIAL DISTRICT)
2. BUILDING LINE SETBACKS:
FRONT = 50' PER FINAL S/D PLAT
REAR = 35' PER ZONING
SIDE = 10' PER ZONING

THE FIELD DATA UPON WHICH THIS PLAT IS BASED HAS A CLOSURE PRECISION OF ONE FOOT IN 9,362 FEET AND AN ANGULAR ERROR OF .00" PER ANGLE POINT AND WAS ADJUSTED USING THE COMPASS RULE.

THIS PLAT HAS BEEN CALCULATED FOR CLOSURE AND IS FOUND TO BE ACCURATE WITHIN ONE FOOT IN 172,103 FEET

EQUIPMENT USED FOR MEASUREMENTS:
TOPCON GTS-303 - TOTAL STATION

THIS (PROPERTY)(RESIDENCE) (IS NOT) LOCATED WITHIN THE 100 YEAR FLOOD AREA PER OFFICIAL FLOOD INSURANCE RATE MAPS. PANEL NO. 13121C0063 F AS REVISED: JUNE 18, 2010

NO N.G.S. MONUMENT WAS FOUND WITHIN 500' OF PROPERTY.

"RIVER LAKE SHORES S/D"
UNIT TWO
P.B. 130:14

N/F "BUSCH"
D.B. 15167:33

DONALD C. MELCHER DIVISION PLAT
P.B. 238:52

N/F "SWOOP"
D.B. 36026:221

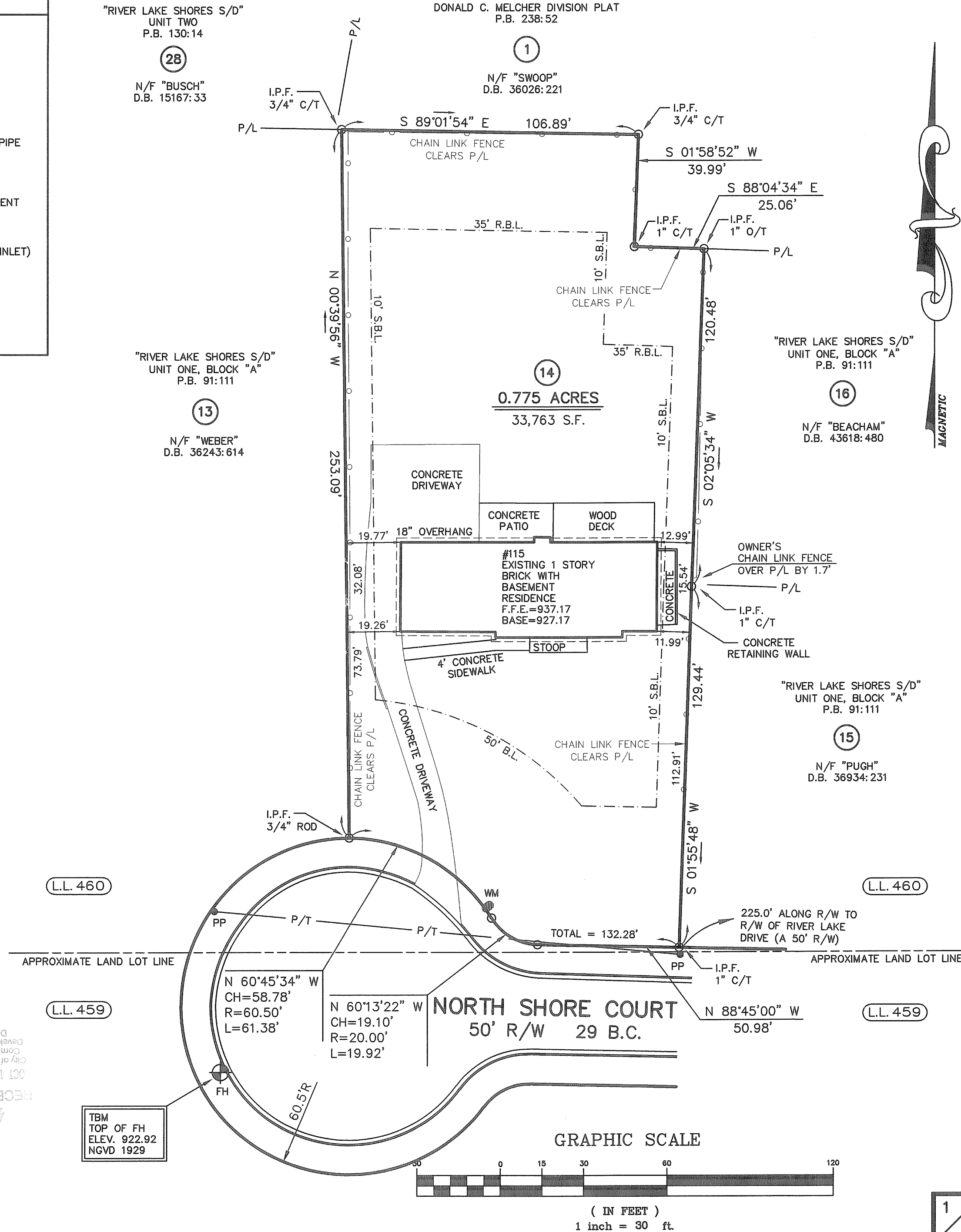
"RIVER LAKE SHORES S/D"
UNIT ONE, BLOCK "A"
P.B. 91:111

N/F "WEBER"
D.B. 36243:614

"RIVER LAKE SHORES S/D"
UNIT ONE, BLOCK "A"
P.B. 91:111

N/F "BEACHAM"
D.B. 43618:480

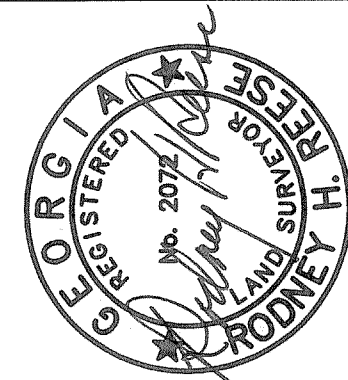
N/F "PUGH"
D.B. 36934:231



BRUMBLOW-REESE & ASSOC., INC.

LAND SURVEYING SERVICES
GEORGIA REGISTRATION NO. 2072

13685 HIGHWAY 9
ALPHARETTA, GEORGIA 30004-3616
PHONE (770) 475-6817
FAX (770) 569-4948
EMAIL--BRASSINC@COMCAST.NET



MEMBER OF S.A.M.S.O.G.

LOT 14, BLOCK "A"
RIVER LAKE SHORES S/D
UNIT ONE

PB:91, PG:111

LOCATED IN:
LAND LOT(S): 460
DISTRICT: 1, SECTION: 2
CITY OF: ROSWELL
COUNTY OF: FULTON
STATE OF GEORGIA

SURVEY FOR
MICHAEL J. RADOMSKI

DATE: SEPTEMBER 8, 2010

REVISIONS:

FIELD BY: SDR,MK
DRAWN BY: KRB,MK
CHECKED BY: RHR
DRAWING: NSHORE-R1
JOB NO. 2010-151