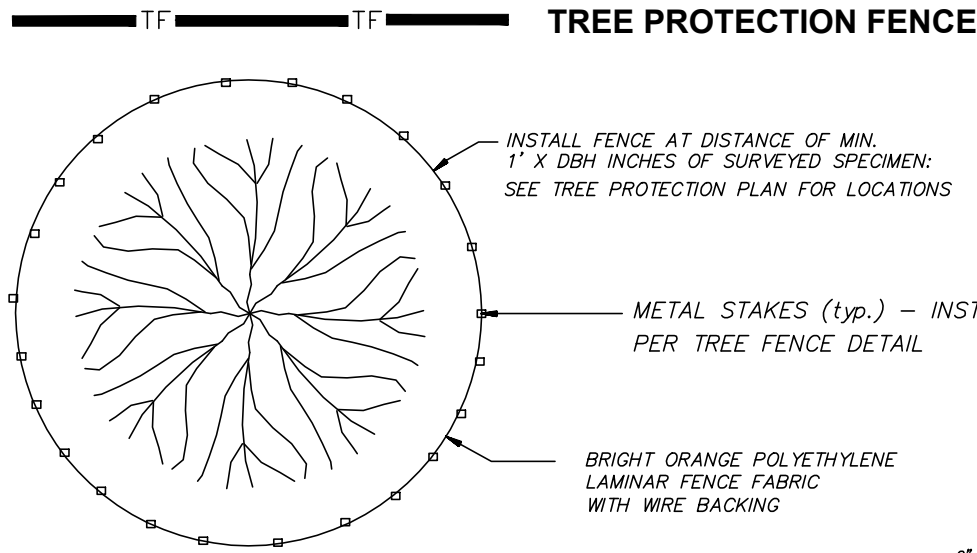
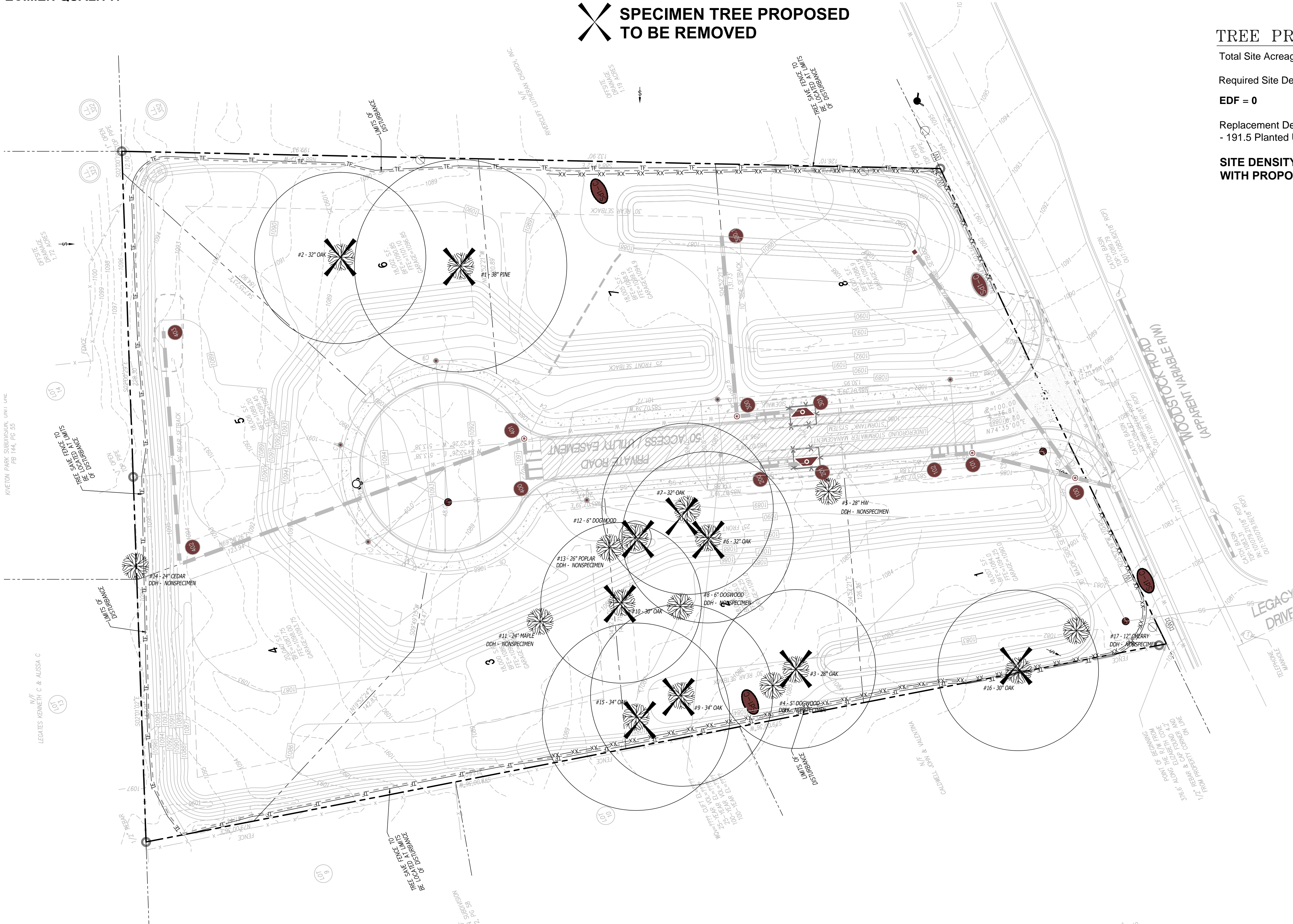


TREE PROTECTION NOTES:

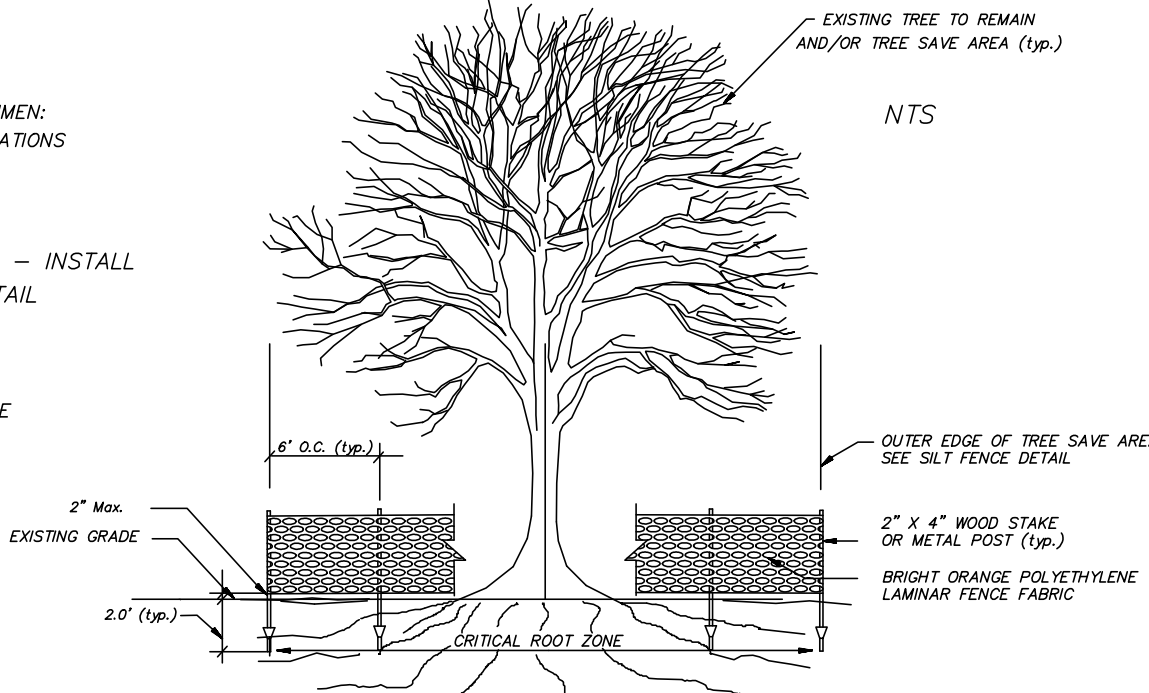
1. ALL TREES SHOWN ON THIS PLAN TO BE RETAINED SHALL BE PROTECTED DURING ALL PHASES OF DEMOLITION/CONSTRUCTION WITH TEMPORARY FENCING. IT SHALL BE THE GENERAL CONTRACTORS RESPONSIBILITY TO COORDINATE WITH LANDSCAPE CONTRACTOR.
2. ALL TREE PROTECTION MEASURES SHALL BE INSTALLED AND INSPECTED PRIOR TO THE START OF ANY LAND DISTURBANCE AND MAINTAINED UNTIL FINAL LANDSCAPING IS INSTALLED.
3. FENCES SHALL COMPLETELY SURROUND TREE OR CLUSTERS OF TREES; SHALL BE LOCATED A MINIMUM OF 3' FROM THE OUTERMOST LIMITS OF THE TREE BRANCHES (DRIP LINE); AND SHALL BE MAINTAINED THROUGHOUT CONSTRUCTION BY THE CONTRACTOR, IN ORDER TO PREVENT THE FOLLOWING:
- A. SOIL COMPACTION IN THE ROOT ZONE AREA RESULTING FROM VEHICULAR TRAFFIC OR STORAGE OF EQUIPMENT OR MATERIALS.
 - B. ROOT ZONE DISTURBANCES DUE TO GRADE CHANGES (GREATER THAN 6 INCHES CUT OR FILL) OR TRENCING.
 - C. WOUNDS TO EXPOSED ROOTS, TRUNK OR LIMBS BY MECHANICAL EQUIPMENT.
 - D. OTHER ACTIVITIES DETRIMENTAL TO TREES SUCH AS CHEMICAL STORAGE, CEMENT TRUCK CLEANING, AND FIRES.
 - E. NO PARKING, STORAGE, OR ANY OTHER CONSTRUCTION ACTIVITIES ARE TO OCCUR WITHIN TREE PROTECTION AREAS.
4. DAMAGE TO TREES OR ANY NATURAL RESOURCE DUE TO CONTRACTOR'S NEGLIGENCE DURING THE CONSTRUCTION PHASE SHALL BE APPRAISED BY THE OWNERS REPRESENTATIVE AND ORDERED REPAIRED, REPLACED, OR COMPENSATED.
5. ALL TREE PROTECTION ZONES SHALL BE DESIGNATED AS SUCH WITH SIGNS POSTED VISIBLY ON ALL SIDES OF THE FENCED AREA. SIGNS SHALL READ "TREE SAVE AREA".

AN ARBORIST REPORT, COVERING ALL SPECIMEN SIZED TREES PROPOSED FOR REMOVAL, HAS BEEN PROVIDED AS PART OF THIS SUBMITTAL UNDER SEPARATE COVER. THOSE SPECIMENS SIZED TREES, PROPOSED FOR REMOVAL, WHICH ARE ALSO OF SPECIMEN CONDITION ARE LISTED BELOW FOR RECOMPENSE CALCULATIONS AND REPLANTINGS. ALL OTHERS ARE NOTED AS BEING OF NON-SPECIMEN QUALITY.

X SPECIMEN TREE PROPOSED TO BE REMOVED



TREE PROTECTION FENCE DETAIL



SPECIMEN TREES TO BE REMOVED
TOTAL SPECIMEN TO BE REMOVED = 72.9 UNITS

(Provide w/ Max. 25% Understory Trees and 75% Min. Overstory Trees)

SPECIMEN TREES TO BE REMOVED					
DBH	Hardwood	Softwood/Understory	TOTAL NO. OF TREES	X UNITS	TOTAL UNITS
6"		1	1	2.4	2.40
28"	1		1	7.2	7.20
30"	2		2	7.5	15.00
32"	3		3	7.8	23.40
34"	2		2	8.1	16.20
38"	1		1	8.7	8.70
TOTAL:					72.90

TREE PROTECTION CALCULATIONS

Total Site Acreage = 3.94 Acres

Required Site Density Factor (SDF) = 3.94 Acres X 30 Units = 118.2 SDF

EDF = 0

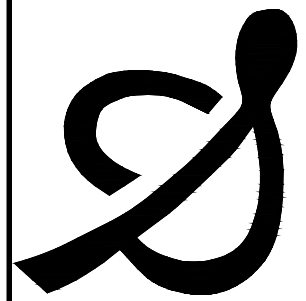
Replacement Density Factor = 118.2 Units (SDF) + 72.9 Specimen Recompense Units - 191.5 Planted Units = 0.4 Surplus Tree Units

SITE DENSITY AND SPECIMEN RECOMPENSE UNITS PROVIDED FOR WITH PROPOSED PLANTINGS WITHIN THIS PERMIT SCOPE AREA.

REVISIONS	
DATE	DESCRIPTION

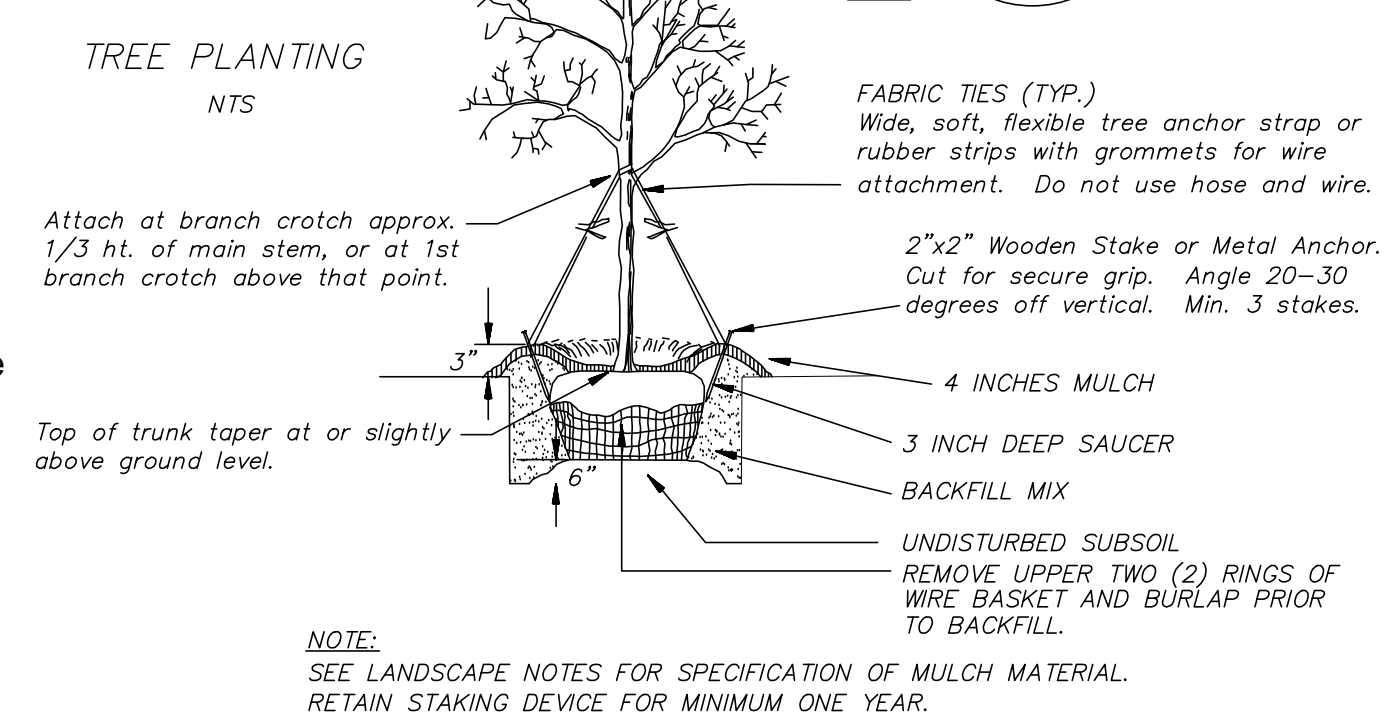
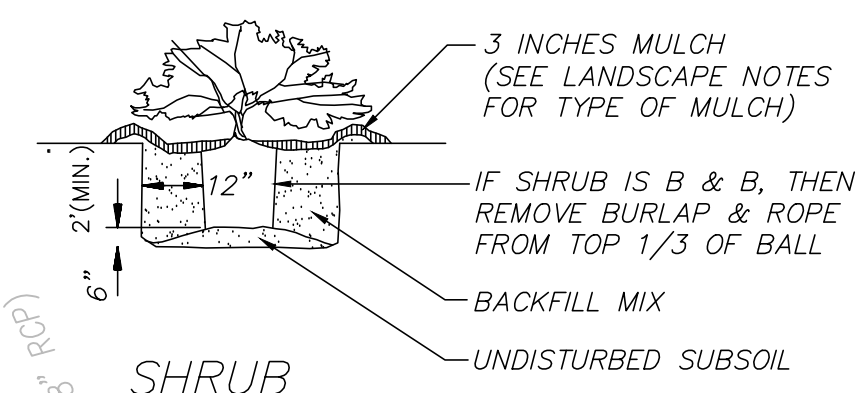
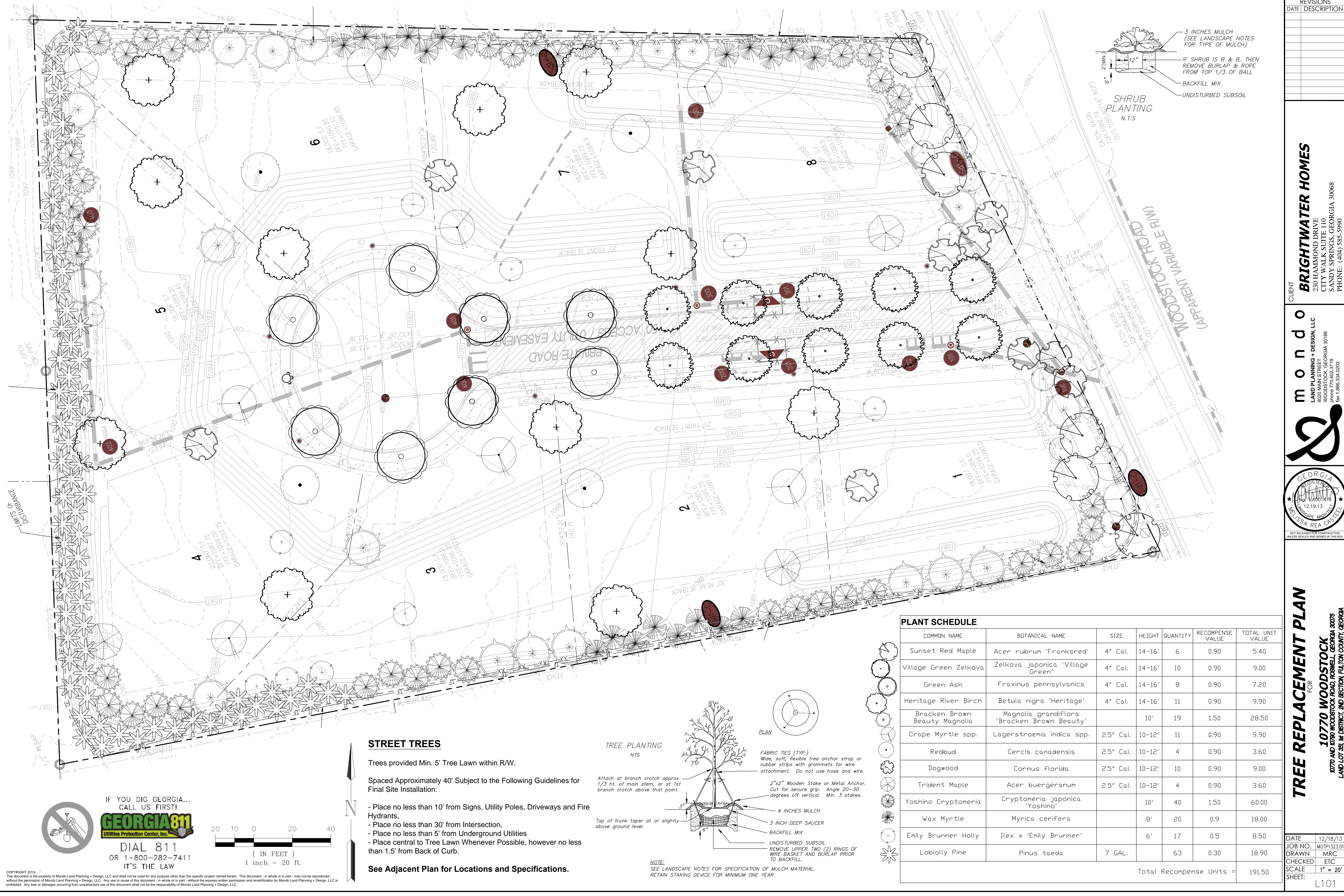
CLIENT
BRIGHTWATER HOMES
230 HAMMOND DRIVE
CITY WALK SUITE 110
SANDY SPRINGS, GEORGIA 30068
PHONE: (404) 585-5990

mondo
LAND PLANNING + DESIGN, LLC
8020 MAIN STREET
WOODSTOCK, GEORGIA 30188
phone 770.402.3719
fax 1.866.334.0203



TREE PROTECTION PLAN
FOR
10770 WOODSTOCK
10770 AND 10790 WOODSTOCK ROAD, ROSWELL, GEORGIA 30075
LAND LOT 351, 361, DISTRICT 2ND SECTION, FULTON COUNTY, GEORGIA

DATE	12/18/13
JOB NO.	MOTP1323.01
DRAWN	MRC
CHECKED	ETC
SCALE	1" = 30'
SHEET:	L100



PLANT SCHEDULE						
COMMON NAME	BOTANICAL NAME	SIZE	HEIGHT	QUANTITY	RECOMPENSE VALUE	TOTAL UNIT VALUE
Sunset Red Maple	Acer rubrum 'Franksred'	4" Cal.	14-16'	6	0.90	5.40
Village Green Zelkova	Zelkova japonica 'Village Green'	4" Cal.	14-16'	10	0.90	9.00
Green Ash	Fraxinus pennsylvanica	4" Cal.	14-16'	8	0.90	7.20
Heritage River Birch	Betula nigra 'Heritage'	4" Cal.	14-16'	11	0.90	9.90
Bracken Brown Beauty Magnolia	Magnolia grandiflora 'Bracken Brown Beauty'		10'	19	1.50	28.50
Crape Myrtle spp.	Lagerstroemia indica spp.	2.5" Cal.	10-12'	11	0.90	9.90
Redbud	Cercis canadensis	2.5" Cal.	10-12'	4	0.90	3.60
Dogwood	Cornus florida	2.5" Cal.	10-12'	10	0.90	9.00
Trident Maple	Acer buergeranum	2.5" Cal.	10-12'	4	0.90	3.60
Yoshino Cryptomeria	Cryptomeria japonica 'Yoshino'		10'	40	1.50	60.00
Wax Myrtle	Myrica cerifera		8'	20	0.9	18.00
Emily Brunner Holly	Ilex x 'Emily Brunner'		6'	17	0.5	8.50
Loblolly Pine	Pinus taeda	7 GAL.		63	0.30	18.90
Total Recompense Units =					191.50	


STREET TREES

Trees provided Min. 5' Tree Lawn within R/W.

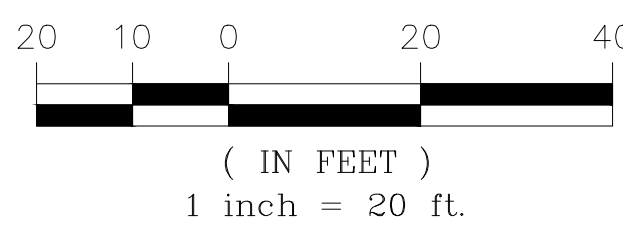
Spaced Approximately 40' Subject to the Following Guidelines for Final Site Installation:

- Place no less than 10' from Signs, Utility Poles, Driveways and Fire Hydrants,
- Place no less than 30' from Intersection,
- Place no less than 5' from Underground Utilities
- Place central to Tree Lawn Whenever Possible, however no less than 1.5' from Back of Curb.


See Adjacent Plan for Locations and Specifications.



IF YOU DIG GEORGIA...
CALL US FIRST!
GEORGIA811
Utilities Protection Center, Inc.
DIAL 811
OR 1-800-282-7411
IT'S THE LAW



20 10 0 20 40
(IN FEET)
1 inch = 20 ft.



N

REVISIONS
DATE DESCRIPTION

CLIENT **BRIGHTWATER HOMES**
230 HAMMOND DRIVE
CITY WALK SUITE 110
SANDY SPRINGS, GEORGIA 30068
PHONE: (404) 585-5990

mondo
LAND PLANNING + DESIGN, LLC
8020 MAIN STREET
WOODSTOCK, GEORGIA 30188
phone 770.402.3719
fax 1.866.334.0203



NOT RELEASED FOR CONSTRUCTION
UNLESS SEALED AND SIGNED IN THIS BOX

TREE REPLACEMENT PLAN
FOR
10770 WOODSTOCK
10770 AND 10790 WOODSTOCK ROAD, ROSWELL, GEORGIA 30075
LAND LOT 381, 1st DISTRICT, 2ND SECTION, FELTON COUNTY, GEORGIA

DATE 12/18/13
JOB NO. MOTIP1323.01
DRAWN MRC
CHECKED ETC
SCALE 1" = 20'
SHEET: L101