

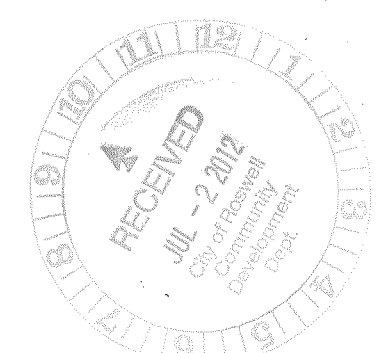
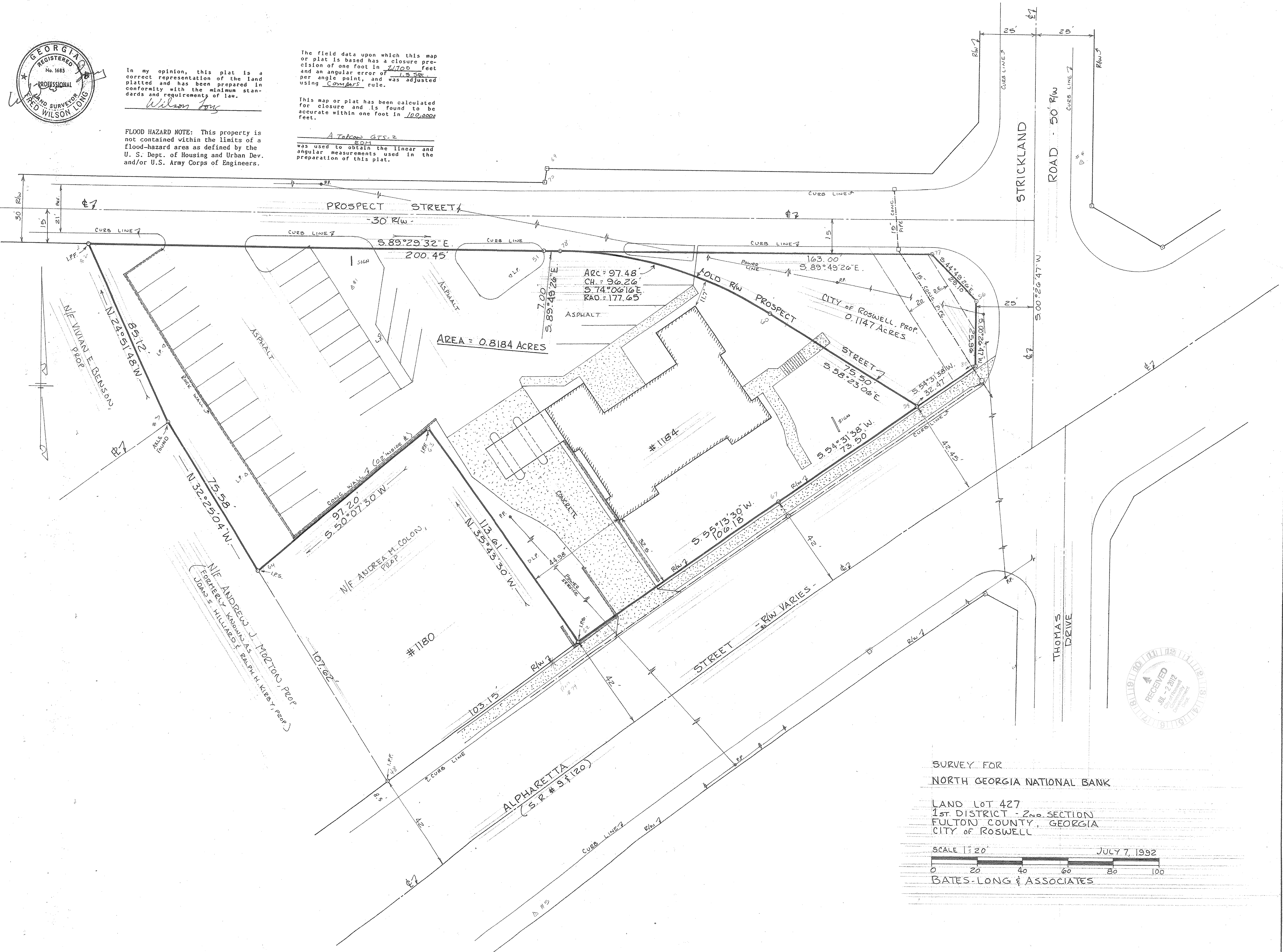


In my opinion, this plat is a correct representation of the land platted and has been prepared in conformity with the minimum standards and requirements of law.  
*Wilson Long*

FLOOD HAZARD NOTE: This property is not contained within the limits of a flood-hazard area as defined by the U. S. Dept. of Housing and Urban Dev. and/or U.S. Army Corps of Engineers.

The field data upon which this map or plat is based has a closure precision of one foot in 2,700 feet and an angular error of 1.5 seconds per angle point, and was adjusted using Compass rule.

This map or plat has been calculated for closure and is found to be accurate within one foot in 100,000 feet.  
A Talman GTS-2 EDM was used to obtain the linear and angular measurements used in the preparation of this plat.



SURVEY FOR  
NORTH GEORGIA NATIONAL BANK

LAND LOT 427  
1st DISTRICT - 2nd SECTION  
FULTON COUNTY, GEORGIA  
CITY OF ROSWELL

SCALE 1" = 20'  
JULY 7, 1992  
BATES-LONG & ASSOCIATES