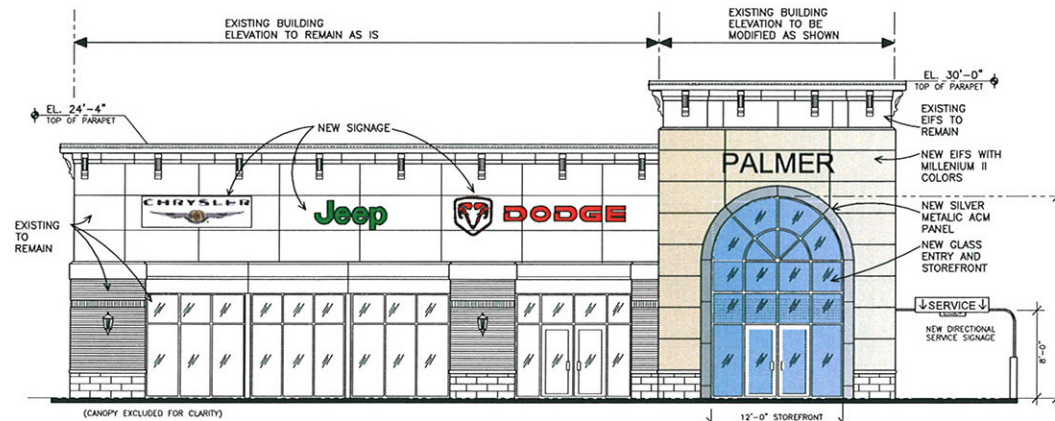
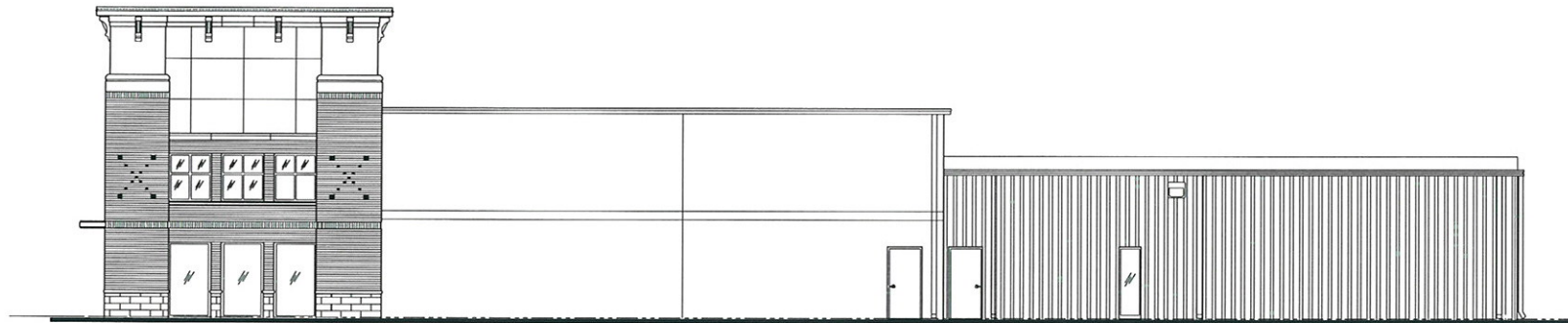


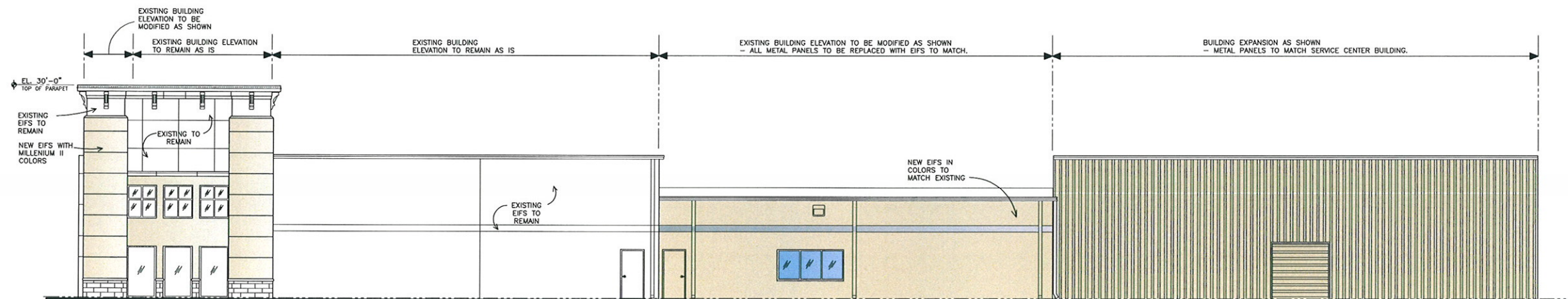
EXISTING FRONT ELEVATION  
SCALE: 1/8" = 1'-0"



PROPOSED FRONT ELEVATION  
SCALE: 1/8" = 1'-0"



EXISTING NORTH ELEVATION  
SCALE: 1/8" = 1'-0"



PROPOSED NORTH ELEVATION  
SCALE: 1/8" = 1'-0"

RECEIVED  
OCT - 6 2009  
City of Roswell  
Community  
Development  
Dept.

ELEVATIONS

OCTOBER 06, 2009  
THIS DRAWING IS THE PROPERTY OF ALEX MUNOZ & ASSOC. AND SHALL NOT BE REPRODUCED IN WHOLE OR IN PART. IT SHALL NOT BE USED FOR ANY OTHER PROJECT. THIS DRAWING IS AN INSTRUMENT OF SERVICE ONLY AND SHALL BE RETURNED TO THE ARCHITECT UPON REQUEST. © 2009, ALEX MUNOZ & ASSOC. INC.

CHRYSLER - JEEP - DODGE

PALMER CJD

11460 ALPHARETTA HIGHWAY  
ROSWELL, GEORGIA 30076  
FULTON COUNTY

ALEX MUNOZ & ASSOCIATES, Inc.

ARCHITECTURE  
INTERIOR DESIGN  
PLANNING  
452 EAST PACES FERRY RD.  
ATLANTA, GEORGIA 30305  
(404) 876-8169

*Alex Munoz*