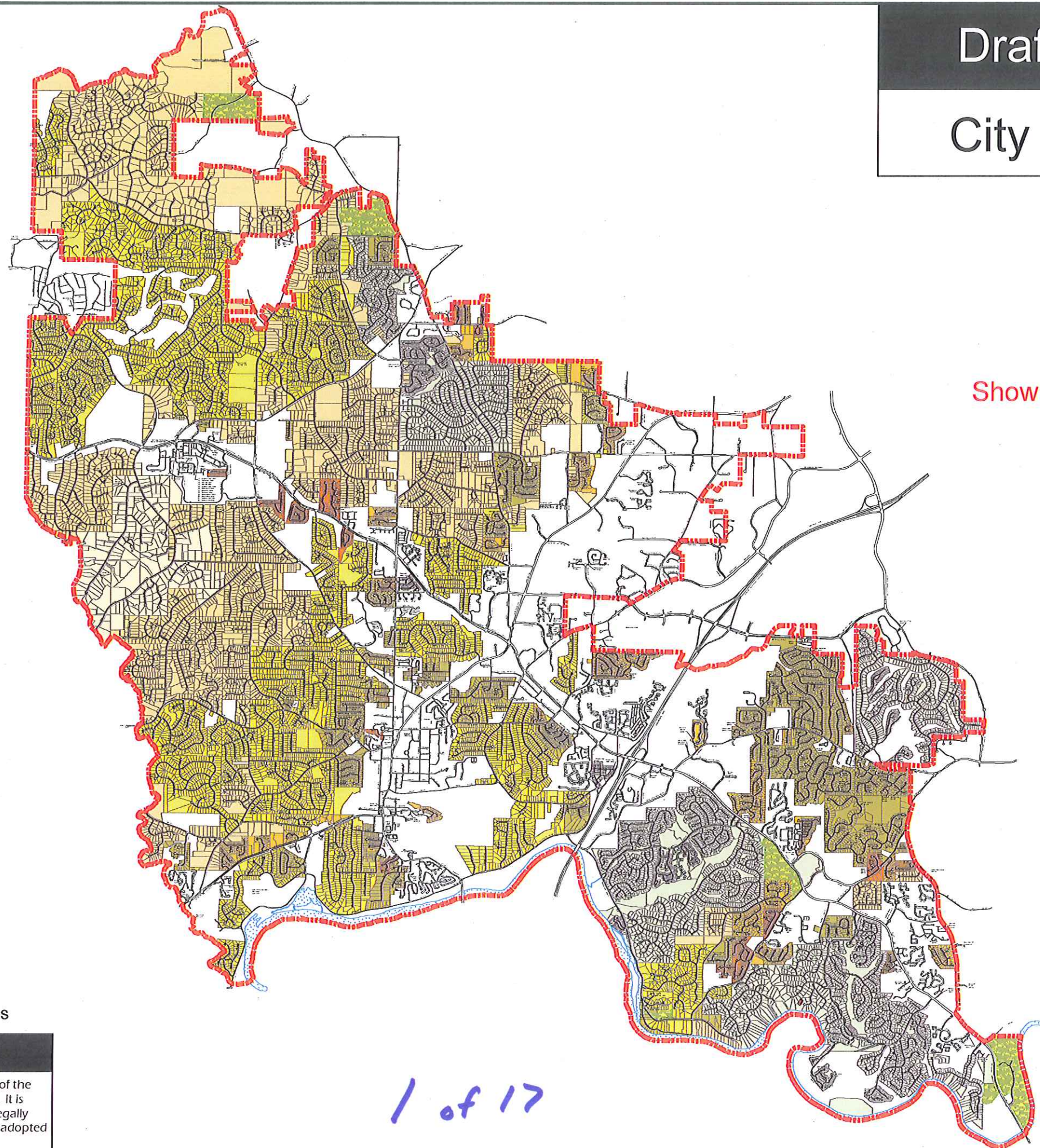


# Draft UDC Zoning Map

## City of Roswell, Georgia



### Legend

#### UDC Zoning

##### Residential

- AG-43 - Agricultural
- RS-87 - Single Family Estate (E-1)
- RS-30 - Single Family Estate (E-2)
- RS-18 - Single Family Suburban (R-1)
- RS-12 - Single Family Suburban (R-2)
- RS-9 - Single Family Small Lot
- RS-6 - Single Family Small Lot
- RS-4 - Single Family Small Lot
- R-CC - Residential Cottage Court
- R-TH - Residential Townhouse
- RM-2 - Residential Multi-Family
- RM-3 - Residential Multi-Family
- Planned Residential Development

#### Corridors & Nodes

- PV - Parkway Village
- RX - Residential Mixed Use
- NX - Neighborhood Mixed Use
- CX - Commercial Mixed Use
- SH - Shopfront Mixed Use
- CC - Commercial Corridor
- CH - Commercial Heavy

#### Downtown

- DR - Downtown Residential
- DX - Downtown Mixed Use
- DS - Downtown Shopfront
- DH - Downtown House

#### Employment

- OR - Office Residential
- OP - Office Park
- IX - Industrial Flex
- IL - Light Industrial

#### Civic & Open Space

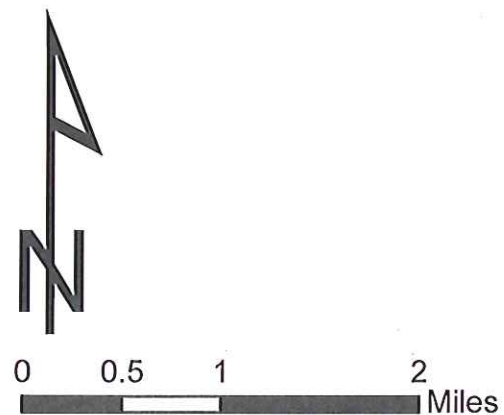
- CIV - Civic and Institutional
- REC - Recreation, Parks and Open Space
- CON - Conservation

#### Overlays

- RC - MRPA River Corridor
- HP - Roswell Historic District
- NC - Neighborhood Conservation District
- City Limits

Height Permitted\* (Stories)  
\*The number shown on the map indicates the number of stories permitted on the property. If no height is indicated on a property, then the maximum number of stories permitted is 3.

Shown on Map



Draft Date: 12/3/2013

This map is a working draft as part of the creation of the Unified Development Code for the City of Roswell. It is intended for discussion purposes only. It is not a legally binding document and has not been approved or adopted by the City of Roswell Mayor & City Council.

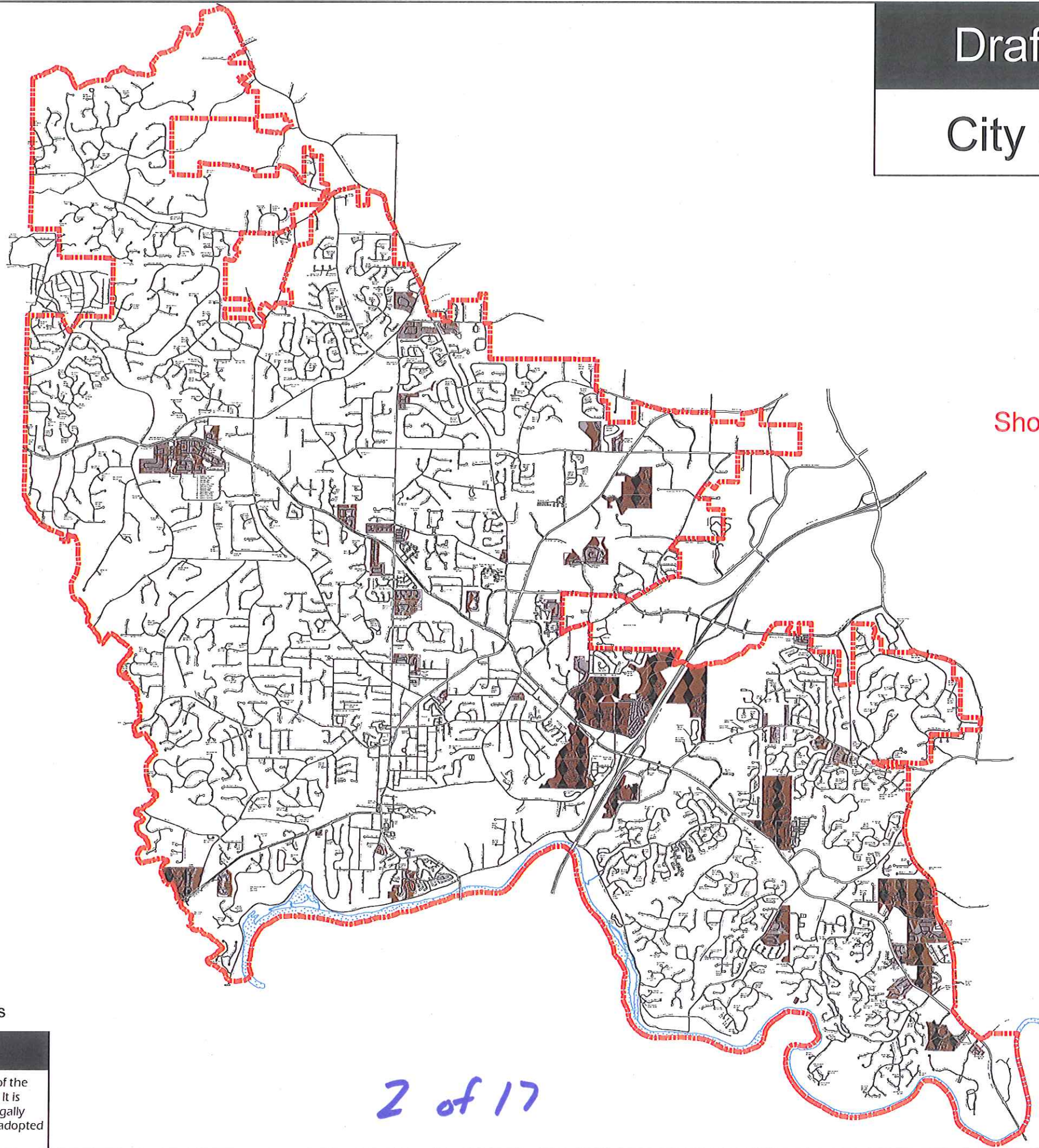
1 of 17

**City of Roswell**  
**Community Development Department**  
**Planning & Zoning Division**  
 38 Hill Street Suite G-30 Roswell, Georgia 30075  
 Phone: 770-641-3774  
[www.roswellgov.com](http://www.roswellgov.com)



# Draft UDC Zoning Map

## City of Roswell, Georgia



### Legend

#### UDC Zoning

##### Residential

- AG-43 - Agricultural
- RS-87 - Single Family Estate (E-1)
- RS-30 - Single Family Estate (E-2)
- RS-18 - Single Family Suburban (R-1)
- RS-12 - Single Family Suburban (R-2)
- RS-9 - Single Family Small Lot
- RS-6 - Single Family Small Lot
- RS-4 - Single Family Small Lot
- R-CC - Residential Cottage Court
- R-TH - Residential Townhouse
- RM-2 - Residential Multi-Family
- RM-3 - Residential Multi-Family
- Planned Residential Development

#### Corridors & Nodes

- PV - Parkway Village
- RX - Residential Mixed Use
- NX - Neighborhood Mixed Use
- CX - Commercial Mixed Use
- SH - Shopfront Mixed Use
- CC - Commercial Corridor
- CH - Commercial Heavy

#### Downtown

- DR - Downtown Residential
- DX - Downtown Mixed Use
- DS - Downtown Shopfront
- DH - Downtown House

#### Employment

- OR - Office Residential
- OP - Office Park
- IX - Industrial Flex
- IL - Light Industrial

#### Civic & Open Space

- CIV - Civic and Institutional
- REC - Recreation, Parks and Open Space
- CON - Conservation

#### Overlays

- RC - MRPA River Corridor
- HP - Roswell Historic District
- NC - Neighborhood Conservation District
- City Limits
- Height Permitted\* (Stories)

### City of Roswell

### Community Development Department Planning & Zoning Division

38 Hill Street Suite G-30 Roswell, Georgia 30075  
Phone: 770-641-3774  
www.roswellgov.com

Draft Date: 12/3/2013

This map is a working draft as part of the creation of the Unified Development Code for the City of Roswell. It is intended for discussion purposes only. It is not a legally binding document and has not been approved or adopted by the City of Roswell Mayor & City Council.

2 of 17