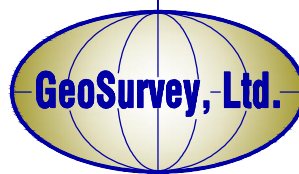
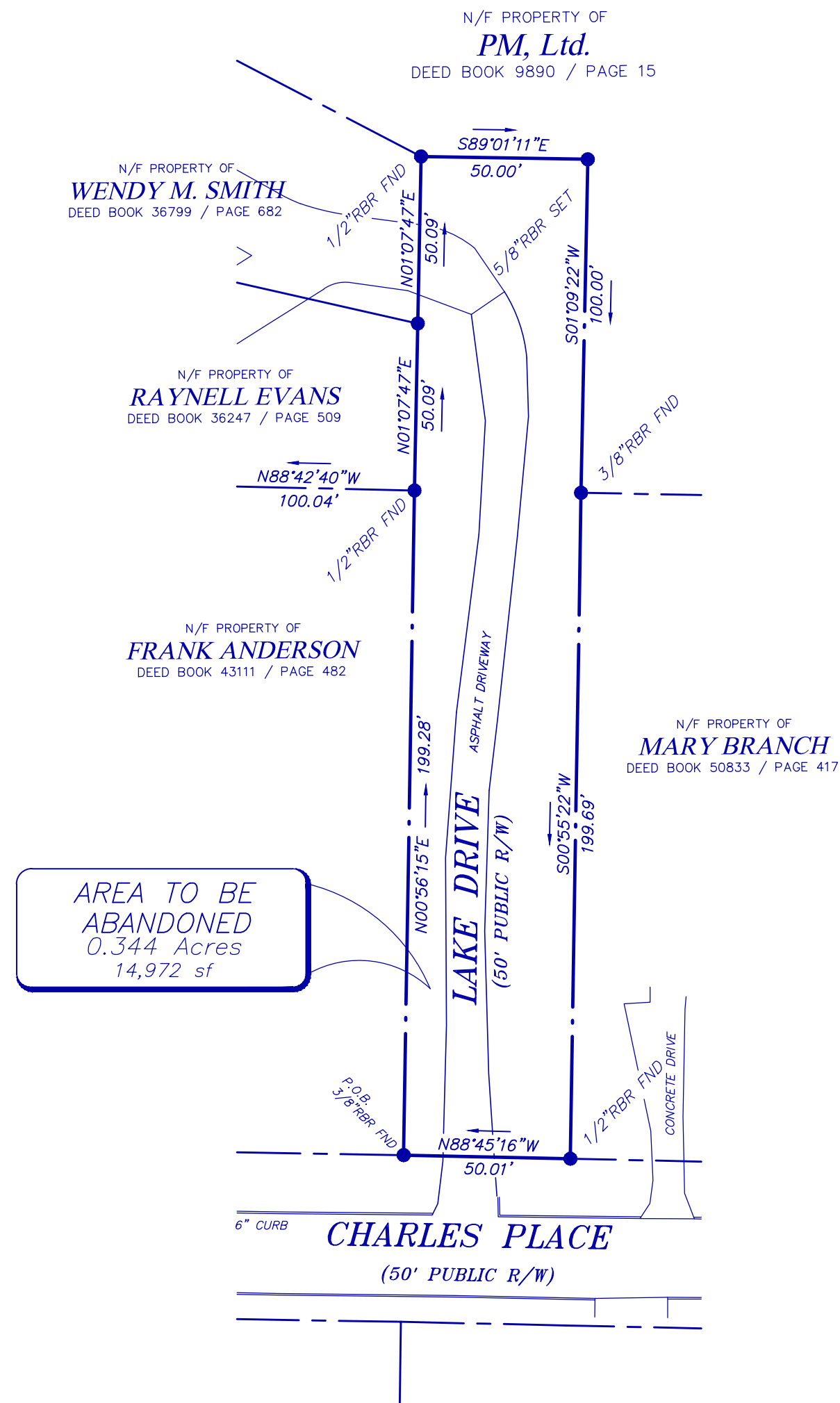


# Exhibit "A"



## LEGEND

## STANDARD ABBREVIATIONS

AC	AIR CONDITIONER
BH	BORE HOLE
CI	CURB INLET
CMP	CORRUGATED METAL PIPE
CMF	CONCRETE MONUMENT FND
CO	SANITARY CLEANOUT
CPED	COMMUNICATION PEDESTAL
CTP	CRIMPED TOP PIPE
DI	DROP INLET
DIP	DUCTILE IRON PIPE
DWCB	DOUBLE WING CATCH BASIN
FNC	FENCE
FND	FOUND
GM	GAS METER
INV	INVERT
JB	JUNCTION BOX
MH	MANHOLE
OHP	OVERHEAD POWER
OTP	OPEN TOP PIPE
PM	POWER METER
POB	POINT OF BEGINNING
POC	POINT OF COMMENCING
RCP	REINFORCED CONCRETE PIPE
RBR	IRON REINFORCING BAR
RBS	5/8"RBR SECT
SS	SANITARY SEWER
SWCB	SINGLE WING CATCH BASIN
TRANS	ELECTRIC TRANSFORMER

## STANDARD SYMBOLS

000.00	SPOT ELEVATION
	POWER POLE
	GUY WIRE
	POWER LINE
	LIGHT POLE
	ELECTRIC TRANSFORMER
	WATER VAULT
	GAS VALVE
	GAS METER
	WATER VALVE
	WATER METER
	FIRE HYDRANT
	UNDERGROUND ELECTRIC LINE
	UNDERGROUND GAS LINE
	UNDERGROUND COMMUNICATION LINE
	UNDERGROUND WATER LINE
	PHOTO POSITION INDICATOR

## VICINITY MAP

SITE LOCATION – LATITUDE: 34° 01' 53" LONGITUDE: 84° 21' 06"



## GENERAL NOTES

THIS SURVEY HAS BEEN PREPARED FOR THE EXCLUSIVE USE OF THE PERSON OR ENTITIES NAMED HEREON. NO EXPRESS OR IMPLIED WARRANTIES WITH RESPECT TO THE INFORMATION SHOWN HEREON IS TO BE EXTENDED TO ANY PERSONS OR ENTITIES OTHER THAN THOSE SHOWN HEREON.

THIS PROPERTY IS NOT LOCATED IN A 100 YEAR SPECIAL FLOOD HAZARD AREA BASED ON THE FLOOD INSURANCE RATE MAP FOR THIS AREA. THE MAP NUMBER FOR THIS AREA IS 13121C0061E (6-22-1998) AND 13121C0063F (6-18-2010). THIS DETERMINATION WAS MADE BY GRAPHICALLY DETERMINING THE POSITION OF THIS SITE ON SAID FIRM MAPS UNLESS OTHERWISE NOTED.

THE HORIZONTAL DATUM FOR THIS SURVEY IS BASED ON THE NORTH AMERICAN DATUM OF 1983 (NAD'83) FROM GPS OBSERVATIONS PERFORMED BY GEOSURVEY, LTD.

PLEASE NOTE: ABOVE GROUND UTILITIES ARE SHOWN HEREON.  
NO UNDERGROUND UTILITIES WERE MARKED OR LOCATED.

PLEASE NOTE: ZONING AND SETBACKS SHOULD BE CONFIRMED AND VERIFIED BY PLANNING AND ZONING PRIOR TO DESIGN OR CONSTRUCTION ACTIVITIES.

## CLOSURE STATEMENT

THE FIELD CLOSURE UPON WHICH THIS PLAT IS BASED HAS A CLOSURE PRECISION OF ONE FOOT IN 23,078, AND WAS ADJUSTED USING THE LEAST SQUARES METHOD. A TRIMBLE S-6 TOTAL STATION AND TRIMBLE DATA COLLECTOR WERE USED TO COLLECT THIS FIELD DATA.

THIS PLAT HAS BEEN CALCULATED FOR CLOSURE AND WAS FOUND TO BE ACCURATE  
WITHIN ONE FOOT IN 565,322 FEET. BDC INIT.

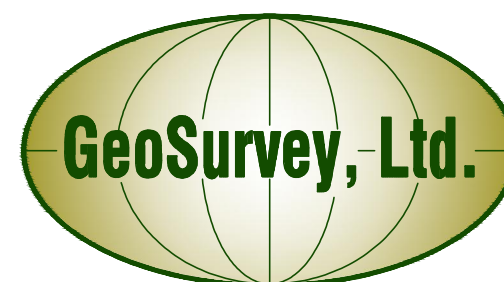
## RIGHT-OF-WAY ABANDONMENT PLAT

## Lake Drive

FOR

*Fulton County Schools*

GS JOB NO:	20134503	DRAWING SCALE:	1"= 40'	SURVEY DATE:	12-12-2013
FIELD WORK:	RE	CITY:	ROSWELL	STATE:	GA
PROJ MGR:	BDC	COUNTY:	FULTON	<div>REVISIONS</div> <div> <div>No.</div> <div>Date</div> <div>Description</div> </div>	
REVIEWED:	JRC	LAND LOT:	450		
DWG FILE:	lake drive.dwg	DISTRICT:	1st	SECTION:	2nd



*Land Surveying & Mapping*

1660 BARNES MILL ROAD  
Marietta, Georgia 30062

Phone: (770) 795-9900  
Fax: (770) 795-8880

[www.geosurvey.com](http://www.geosurvey.com)

I HEREBY CERTIFY this survey has been prepared in conformity with The Technical Standards for Property Surveys in Georgia as set forth in Chapter 180-7 of the Rules of the Georgia Board of Registration for Professional Engineers and Land Surveyors and as set forth in the Georgia Plat Act O.C.G.A. 15-6-67.

