



FIVE YEAR ACTION PLAN

The Action Plan outlines the appropriate steps for local and State leaders to implement the recommendations of this plan and identifies key agencies that should be involved with the task. It is not expected that every item listed would be completed over the next several years; however, the process should be initiated to best take advantage of the momentum gained with the development of this plan and the collective work of the local champions that were involved in the process.

Funding is, of course, a critical component of the implementation of the plan. Without money to implement the recommendations (whether local, state, or federal), the plan is merely a wish list. Given funding considerations at the federal level and probable redirection of money to asset management at the regional level, non-local funding dollars for new capital may be even scarcer than in the past. It is, therefore, all the more critical that cities be prepared to implement projects when funding does become available. According to the *Breaking Ground 2009*, a status report published by ARC of TIP projects, approximately 65 percent of the phases (over \$1 billion) were delayed to 2010 for various reasons. Some of this delay can be attributed to cities that do not have local matches set aside, do not have public support established for the projects, etc. These types of obstacles result in projects being delayed or not implemented at all.

In order for the Cities of North Fulton to be prepared for project implementation, the following principles are recommended:

- ◆ Show commitment to projects
 - May include upfront concept design / feasibility / Preliminary Engineering using local dollars (if federal funding is going to be pursued for Right-of-Way and Construction phases, the Cities should coordinate with GDOT to ensure compliance with federal protocol).
 - Complete a public process when feasible to establish support for the project. Public opposition has the ability to delay or derail a project completely.
- ◆ Complete current projects in the TIP
 - Focus on completion of the current projects in the TIP
 - If priorities change, request that projects be removed from the TIP instead of letting them remain for many years
- ◆ Ensure that the local match has been set aside for upcoming projects.
- ◆ Focus on a few priorities instead of spreading support across a large number of projects.

Keeping these principles in mind, the Action Plan was developed to focus on key priorities, many of which (or similar projects) are currently in the TIP or RTP. Sponsors and jurisdictional champions were outlined for each of the Action Plan recommendations. Coordination among jurisdictions within North Fulton as well as to adjacent counties and cities should also be incorporated as projects move forward.

It is important to note that while these improvements are shown separated by mode, that all modes must be considered together to truly implement a multimodal plan. Projects are listed separately here for convenience, since many travel modes draw upon their own unique funding sources.

North Fulton TRIP - Five Year Action Plan

Proj #	Tier	Project Name	Action Item (5-year)	Currently in TIP or RTP	Sponsor	Jurisdiction Champion	Coordinate with
General Recommendations							
-	-	Approval of North Fulton TRIP	All North Fulton Cities to Adopt the North Fulton TRIP	-	-	All North Fulton Cities	-
-	-	Continuation of the Memorandum of Agreement (MOA)/ Creation of Coordinating Committee	Cities should develop a new MOA to continue the organizational structure developed to complete the North Fulton TRIP outlining participation, regular meetings, approval processes, etc.	-	-	All North Fulton Cities	-
-	-	Project inclusion in the TIP and RTP	Work with ARC to include the maximum number of North Fulton projects in the RTP and TIP.	-	-	All North Fulton Cities	ARC
Bike / Pedestrian Recommendations							
-	-	Adopt Pedestrian and Bicycle LOS Guides (accomplished with the approval of the North Fulton TRIP)	Adopt the Pedestrian and Bicycle LOS Guides provided in this study for use in prioritizing bike/pedestrian improvements. Bike/pedestrian improvements inside activity centers should be considered highest priorities.	-	-	All North Fulton Cities	-
BP101	1	Big Creek Greenway Connection to Forsyth County	Begin conceptual design for extension of the Big Creek Greenway to Forsyth and to the Chattahoochee River Walk, while determining feasible connections to Johns Creek and Milton.	No	Alpharetta	Alpharetta	Forsyth County, Johns Creek, Milton
BP102	1	Big Creek Greenway Connection to Chattahoochee River Walk		No	Roswell	Roswell	Alpharetta
BP105	1	Johns Creek Connection to Big Creek Greenway		No	Johns Creek	Johns Creek	Alpharetta
BP106	1	Milton Connection to Big Creek Greenway		No	Milton	Milton	Alpharetta
BP101	1	Big Creek Greenway Connection to Forsyth County	Begin implementation of the critical Big Creek Greenway extensions to both Forsyth County and to the Chattahoochee River Walk.	No	Alpharetta	Alpharetta	Forsyth County, Johns Creek, Milton
BP102	1	Big Creek Greenway Connection to Chattahoochee River Walk		No	Roswell	Roswell	Alpharetta

North Fulton TRIP - Five Year Action Plan

Proj #	Tier	Project Name	Action Item (5-year)	Currently in TIP or RTP	Sponsor	Jurisdiction Champion	Coordinate with
BP103	1	Morgan Falls/Power Easement multi-use trail	Begin coordination with Cobb County and the City of Dunwoody, developing conceptual designs for potential alignments.	No	Sandy Springs	Sandy Springs	Cobb County, Dunwoody
-	-	Establish annual bike / pedestrian budget within the city's capital planning expenditures	Establish annual bike/pedestrian allocation in the transportation budget for any municipality where this does not currently exist.	-	-	All North Fulton Cities	-
-	-	Restripe roadways to create bike lanes or wide shoulders	Restripe approximately 12 miles of roadway that have excess width for bike lanes or wide shoulders (as noted in this report).	-	-	All North Fulton Cities	-
-	-	Implement easy-opportunity bike/pedestrian improvements	As funding allows, construct bike/ped improvements where minimal grading is required (as noted in this report).	-	-	All North Fulton Cities	-
-	-	Include bike/pedestrian amenities on all roadway projects	Ensure bicycle and pedestrian amenities are included on all major roadway improvements, to the degree that they are feasible.	-	-	All North Fulton Cities	-
Transit Recommendations							
-	MC*	Revision of local MARTA routes between activity centers	Work with MARTA to discuss changes to the existing local bus routes in North Fulton to better service key activity centers (fiscally constrained).	-	-	All North Fulton Cities	-
-	MC	Focus on land use mix and densities around proposed transit stations.	Begin discussions among North Fulton Cities and transit providers (MARTA, GRTA) regarding future transit locations and potential transit-oriented development, particularly along GA 400 and the regionally significant corridors.	-	-	All North Fulton Cities	MARTA, GRTA
Vehicular Recommendations							
VH101	1	Capacity Improvements to Abbotts Bridge Road (SR 120)	Conduct formal traffic study and conceptual design to establish operational improvements, right-of-way implications, and to assess public opinion.	RTP (first phase)	GDOT	Johns Creek	Gwinnett County
VH111	1	Capacity Improvements to Kimball Bridge Road		RTP (first phase)	GDOT	Johns Creek	Alpharetta

* Multi-County

North Fulton TRIP - Five Year Action Plan

Proj #	Tier	Project Name	Action Item (5-year)	Currently in TIP or RTP	Sponsor	Jurisdiction Champion	Coordinate with
VH103	1	Capacity Improvements to Arnold Mill Road (SR 140)	Conduct formal traffic study and conceptual design to establish operational improvements, right-of-way implications, and to assess public opinion. Projects can be phased for Right-of-Way acquisition and Construction, but the four projects should be studied in unison because of their interaction with each other.	RTP (first phase)	GDOT	Milton	Roswell, Alpharetta, Cherokee County
VH104	1	Capacity Improvements to Rucker Road		No	Alpharetta	Alpharetta	Milton, Roswell, Cherokee County
VH107	1	Capacity Improvements to Hardscrabble Road		No	Roswell	Roswell	Milton, Alpharetta, Cherokee County
VH110	1	Capacity Improvements to Houze Road		RTP (first phase)	GDOT	Roswell	Milton, Alpharetta, Cherokee County
VH105	1	Capacity Improvements to Atlanta Street (SR 9)	Complete design, pursue Right-of-Way and Construction phases.	TIP (partial)	Roswell	Roswell	-
VH108	1	Capacity Improvements to McGinnis Ferry Road	Work with GDOT and Forsyth County to advance Preliminary Engineering and Right-of-Way phases.	TIP / RTP (first phase)	GDOT	Alpharetta, Johns Creek	Forsyth County
VH109	1	Capacity Improvements to Hammond Drive	Advance Preliminary Engineering and potentially Right-of-Way acquisition.	No	Sandy Springs	Sandy Springs	-
VH204 / VH205	2	Improvements to the Holcomb Bridge Road Corridor, including but not limited to interchange redesign, construction of the Big Creek connection, etc.	Conduct Holcomb Bridge Road Corridor / GA 400 interchange study to assess recommended improvements to the system along Holcomb Bridge Road between Warsaw Road and Holcomb Woods Parkway.	TIP	Roswell	Roswell	-

North Fulton TRIP - Five Year Action Plan

Proj #	Tier	Project Name	Action Item (5-year)	Currently in TIP or RTP	Sponsor	Jurisdiction Champion	Coordinate with
Access Management Recommendations							
-	-	Corridor Studies of 3 regionally significant corridors:	Conduct corridor studies of the three regionally significant corridors to determine specific recommendations such as medians, frontage or backage roads, interparcel connectivity, driveway consolidation, etc.	-	-	-	-
		- Arnold Mill (SR 140) / Rucker Road / Old Milton Parkway (SR 120) / State Bridge Road		No	GDOT	Milton, Roswell, Alpharetta, Johns Creek	Cherokee County, Gwinnett County
		- Holcomb Bridge Road (SR 140) / Crossville Road (SR 92)		No	GDOT	Roswell	Johns Creek, Gwinnett County, Cobb County
		- SR 9		No	GDOT	Sandy Springs, Roswell, Alpharetta, Milton	City of Atlanta, Forsyth County
-	-	Develop Overlay Ordinances for 3 regionally significant corridors:	In conjunction with studying the three primary corridors, the Cities should jointly develop overlay ordinance language to be used consistently along the corridors.	-	-	-	-
		- Arnold Mill (SR 140) / Rucker Road / Old Milton Parkway (SR 120) / State Bridge Road		No	Milton, Roswell, Alpharetta, Johns Creek	Milton, Roswell, Alpharetta, Johns Creek	Cherokee County, Gwinnett County
		- Holcomb Bridge Road (SR 140) / Crossville Road (SR 92)		No	Roswell	Roswell	Johns Creek, Gwinnett County, Cobb County
		- SR 9		No	Sandy Springs, Roswell, Alpharetta, Milton	Sandy Springs, Roswell, Alpharetta, Milton	City of Atlanta, Forsyth County

North Fulton TRIP - Five Year Action Plan

Proj #	Tier	Project Name	Action Item (5-year)	Currently in TIP or RTP	Sponsor	Jurisdiction Champion	Coordinate with
ATMS Recommendations							
-	-	ATMS study for all North Fulton	Perform a concentrated ATMS study to understand existing conditions of the current systems and to develop a plan to develop and to guide future coordination.	No (only corridor studies)	All North Fulton Cities	All North Fulton Cities	Adjacent Counties
Transportation Demand Management Recommendations							
-	-	Determine level of investment desired for TDM Strategies	Successful implementation of TDM strategies will require on-going dedicated staffing and resources. The Coordination Committee should determine what level of investment the Cities would like to jointly make for TDM implementation.	No	All North Fulton Cities	All North Fulton Cities	All North Fulton Cities
-	-	Select which TDM strategies are appropriate for implementation	<p>Once a level of investment and resources has been established, the Coordinating Committee should implement strategies provided in this report such as:</p> <ul style="list-style-type: none"> ◆ Working with employers to implement teleworking and flex working programs, increase transit ridership, carpooling, walking, and cycling incentives and availability ◆ Working with schools to improve school bus ridership, develop schoolpool programs, and improve efficiency of pick-up and drop-off operations 	No	All North Fulton Cities	All North Fulton Cities	North Fulton CID, Perimeter CID, Fulton County Schools, Local Private Schools, Local Employers, Clean Air Campaign, RideSmart
-	-	Develop TDM Specific 5 year action plan	A detailed five year action plan should be developed based on availability of resources and programs selected for implementation. This program should assign responsibilities and set measurable goals.	No	All North Fulton Cities	All North Fulton Cities	North Fulton CID, Perimeter CID, Fulton County Schools, Local Private Schools, Local Employers, Clean Air Campaign, RideSmart

North Fulton TRIP - Five Year Action Plan

Proj #	Tier	Project Name	Action Item (5-year)	Currently in TIP or RTP	Sponsor	Jurisdiction Champion	Coordinate with
-	-	Perform baseline TDM Survey to Measure Program Performance	Based on programs selected for implementation, existing conditions should be documented using employer and school surveys. This will provide necessary information to evaluate program performance and determine which investments have been successful and which programs should be adjusted or eliminated.	No	All North Fulton Cities	All North Fulton Cities	North Fulton CID, Perimeter CID, Fulton County Schools, Local Private Schools, Local Employers, Clean Air Campaign, RideSmart



PROJECT IMPLEMENTATION MONITORING

In 2008, five cities within North Fulton signed a Memorandum of Agreement (MOA) to formalize their interest in developing a regionally significant, cross-jurisdictional transportation plan. The MOA served as a legally binding agreement, documenting the roles and responsibilities of each of the five Cities, ARC, Mountain Park, and the Community Improvement Districts (CIDs). Because no other formal umbrella organization exists to coordinate these Cities, the MOA was an effective tool for organized communication and cooperation.

Following the adoption of the North Fulton TRIP by each of the six Cities within North Fulton, it is recommended that a new MOA be developed for the implementation of the plan. ARC is amenable to staying involved and helping to foster communication between the Cities moving forward. The recommended MOA, to be developed by the Cities in conjunction with ARC, should address the following provisions and protocols:

Committee Structure

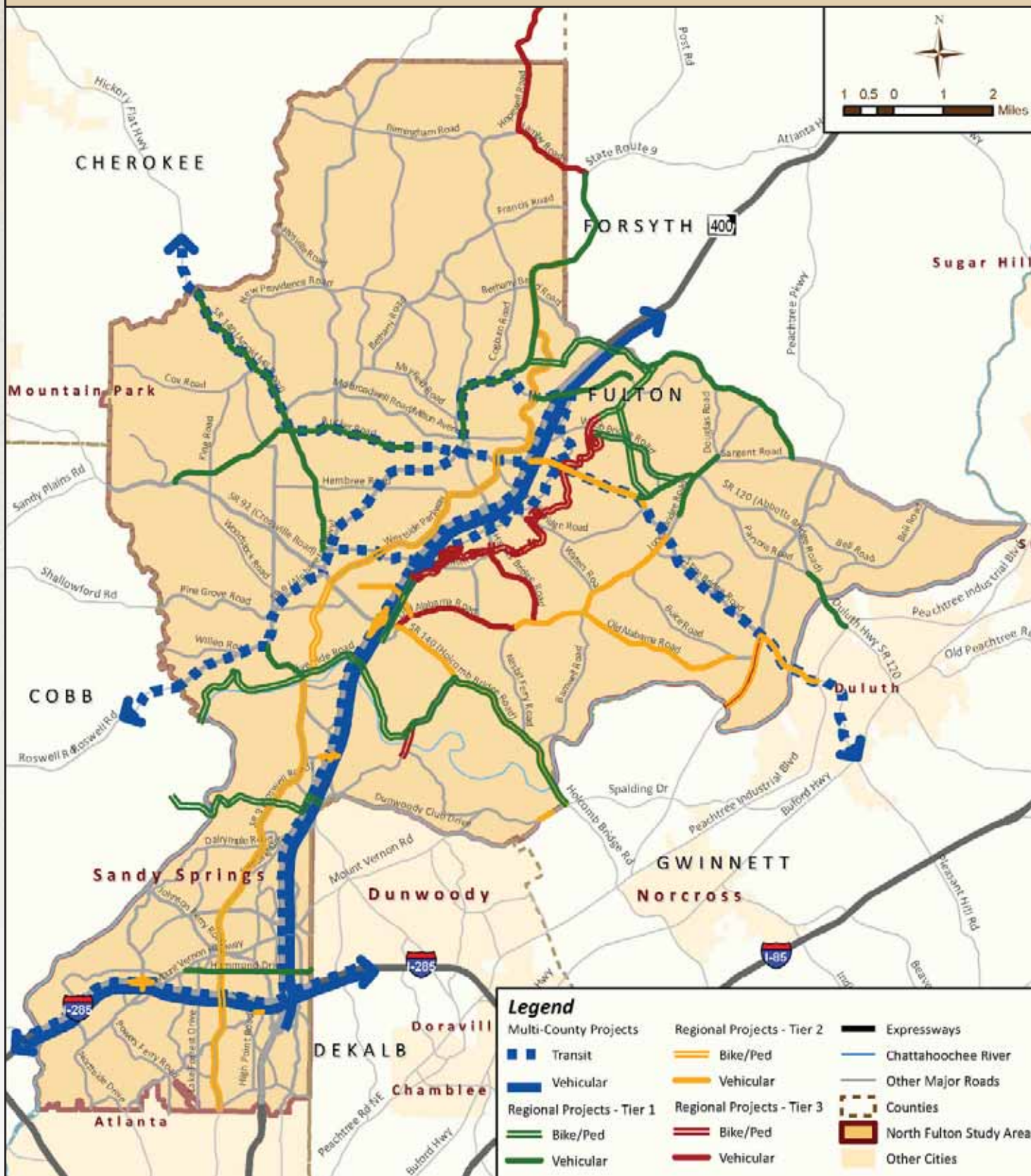
- ◆ Assign staff from each of the Cities and ARC to serve on a Coordination Committee (most likely the current members of the Project Management Team)
- ◆ Determine meeting frequencies and types (for example, conference calls once a month with in-person meetings occurring quarterly)
- ◆ Determine whether or not an administrative city needs to be selected as was established in the original MOA and what purpose they would potentially serve

Goals of the Coordination Committee

- ◆ Determine protocol for allowing modifications to the adopted CTP by one or more of the Cities
- ◆ Determine how formal decisions will be made by the Mayors and City Councils relative to cross-jurisdictional transportation projects and policies
- ◆ Determine key priorities for advancing projects (using the Action Plan as a guide)
- ◆ Determine teaming between Cities and coordination with other Cities, Counties, CIDs, etc.
- ◆ Set implementation milestones for recommended projects from the CTP that are included in the TIP and RTP
- ◆ Determine funding priorities and new funding opportunities that the Cities can consider jointly
- ◆ Coordinate land use decisions along corridors / boundaries and work together to develop access management overlay districts
- ◆ Coordinate implementation of TDM strategies
- ◆ Coordinate key studies: access management, ATMS, project corridor studies, etc.
- ◆ Initiate transit conversations with MARTA, GRTA, or other relevant operators
- ◆ Coordinate discussions on combined transportation demand management strategies
- ◆ Conduct before / after studies of key corridors to assess the results of implemented projects

North Fulton All Projects Recommended

October 2010





APPENDIX

Big Creek Greenway Connection to Forsyth County



Project Type:

Off-Road Multi-Use Trail

Project Description:

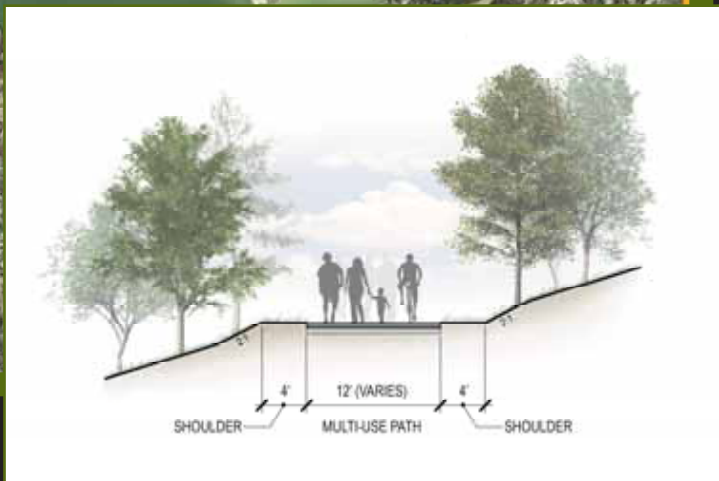
Connect Big Creek Greenway at Marconi Drive (currently under construction) to Forsyth County's trail system with off-road multi-use trail

Calculated Cost:

\$10,000,000

Notes:

- Route alignment may change depending on constraining factors
- Trail width may vary between 10 and 14 feet



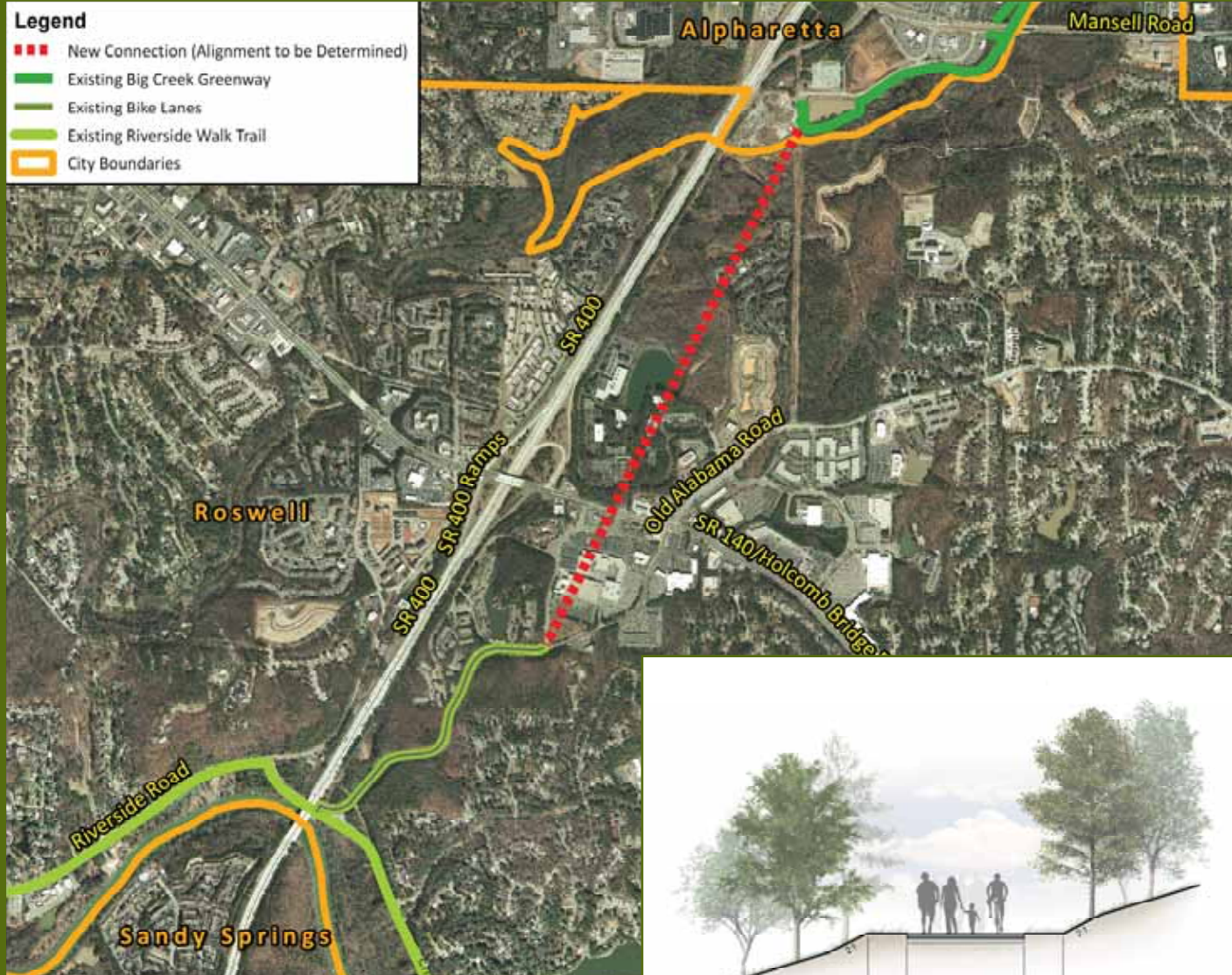
North Fulton

TRANSPORTATION RESOURCE
IMPLEMENTATION PROGRAM



- Alpharetta
- Johns Creek
- Milton
- Atlanta Regional Commission
- Mountain Park
- Roswell
- Sandy Springs
- Kimley-Horn and Associates, Inc.

Big Creek Greenway Connection to Chattahoochee River Walk



Project Type

On or Off-Road Multi-Use Trail

Project Description:

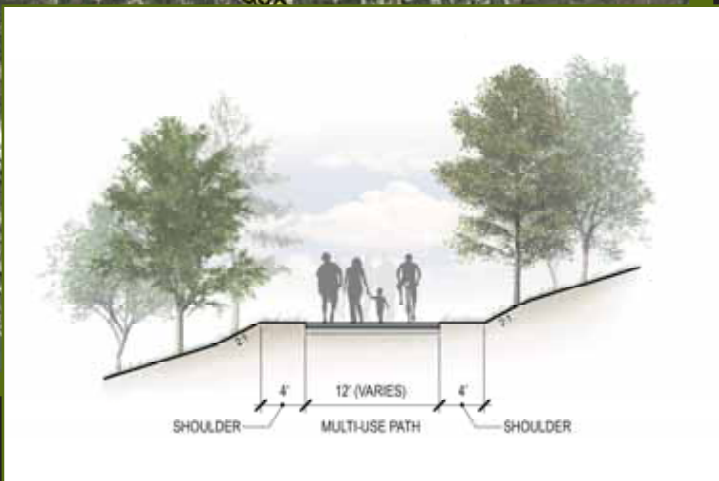
Connect Big Creek Greenway to Roswell's Chattahoochee River Walk along Riverside Drive via existing bike lanes along Old Alabama Road south of Holcomb Bridge Road. Grade separation at Holcomb Bridge Road preferred. Alignment not yet determined. May consist of on or off-road facilities.

Calculated Cost:

\$4,000,000

Notes:

- Route alignment may change depending on constraining factors
- Off-road trail width may vary between 10 and 14 feet



North Fulton

TRANSPORTATION RESOURCE
IMPLEMENTATION PROGRAM



- Alpharetta
- Johns Creek
- Milton
- Atlanta Regional Commission
- Mountain Park
- Roswell
- Sandy Springs
- Kimley-Horn and Associates, Inc.

Morgan Falls/Power Easement Multi-Use Trail



Project Type

On or Off-Road Multi-Use Trail

Project Description:

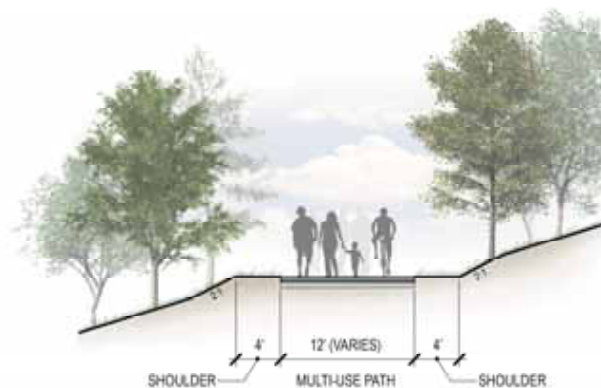
Construct a multi-use trail within power line easement from Lower Roswell Road in Cobb County, crossing the Chattahoochee River with a new bridge, through Morgan Falls Park, east to Colquitt Road, north to Pitts Road - Project to link to other on-road bike facilities, including to trails within the City of Dunwoody

Calculated Cost:

\$16,000,000

Notes:

- Route alignment may change depending on constraining factors
- Off-road trail width may vary between 10 and 14 feet



North Fulton

TRANSPORTATION RESOURCE
IMPLEMENTATION PROGRAM



- Alpharetta
- Johns Creek
- Milton
- Atlanta Regional Commission
- Mountain Park
- Roswell
- Sandy Springs
- Kimley-Horn and Associates, Inc.

East-West Bicycle and Pedestrian Facility



Project Type

On or Off-Road Multi-Use Trail

Project Description:

Enhance bike and pedestrian facilities along Riverside Road. Add an on-road multi-use trail (side path) along Eves Road and Holcomb Bridge Road creating a complete east-west bike/pedestrian route through North Fulton

Calculated Cost:

\$6,000,000

Notes:

- Route alignment may change depending on constraining factors
- Off-road trail width may vary between 10 and 14 feet



North Fulton
TRANSPORTATION RESOURCE
IMPLEMENTATION PROGRAM



- Alpharetta
- Johns Creek
- Milton
- Atlanta Regional Commission
- Mountain Park
- Roswell
- Sandy Springs
- Kimley-Horn and Associates, Inc.

Johns Creek Connection to Big Creek Greenway

Legend

- Johns Creek Big Creek Greenway Connection
- Proposed Big Creek Greenway Extension
- Existing Trail
- Existing Big Creek Greenway
- City Boundaries



Project Type

On and Off-Road Multi-Use Trail

Project Description:

Connect Johns Creek to the Big Creek Greenway with an on-road side path along Webb Bridge Road and with an off-road multi-use trail along an existing power line easement

Calculated Cost:

\$6,000,000

Notes:

- Route alignment may change depending on constraining factors
- Off-road trail width may vary between 10 and 14 feet

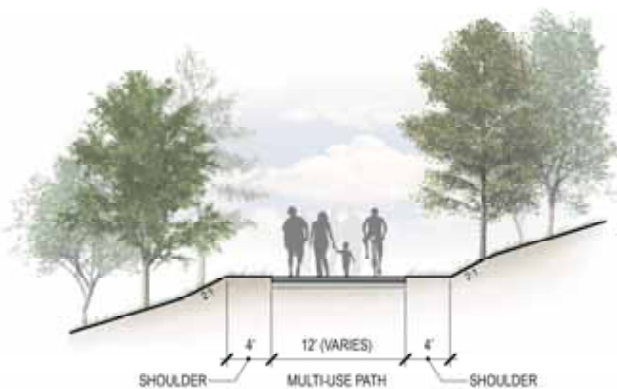
North Fulton

TRANSPORTATION RESOURCE

IMPLEMENTATION PROGRAM



- Alpharetta
- Johns Creek
- Milton
- Atlanta Regional Commission
- Mountain Park
- Roswell
- Sandy Springs
- Kimley-Horn and Associates, Inc.



Milton Connection to Big Creek Greenway

Legend

- ■ ■ Milton Big Creek Greenway Connection
- ■ ■ Proposed Big Creek Greenway Extension
- North Fulton Boundary
- City Boundaries



Johns Creek Connection to Big Creek Greenway

On or Off-Road Multi-Use Trail

Project Description:

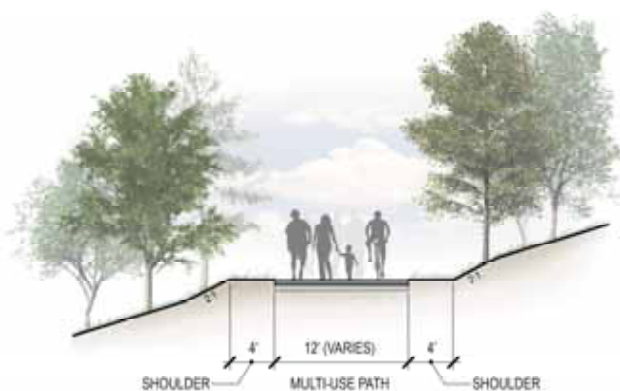
Connect Milton to the Big Creek Greenway along Webb Road, Morris Road, McGinnis Ferry Road and through Union Hill Park. Construct as off-road multi-use trail where possible

Calculated Cost:

\$10,000,000

Notes:

- Route alignment may change depending on constraining factors
- Off-road trail width may vary between 10 and 14 feet

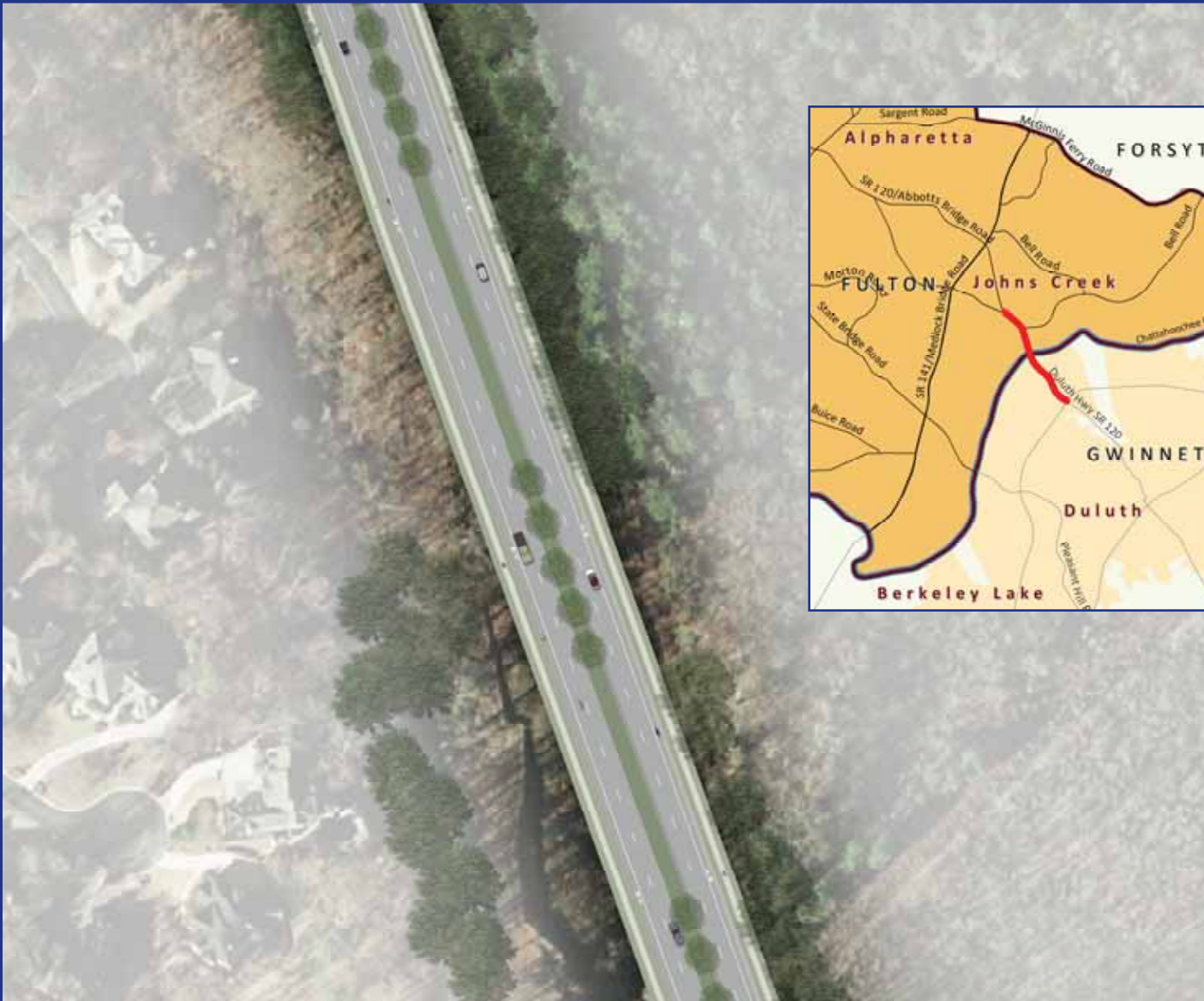


North Fulton
TRANSPORTATION RESOURCE
IMPLEMENTATION PROGRAM



- Alpharetta
- Johns Creek
- Milton
- Atlanta Regional Commission
- Mountain Park
- Roswell
- Sandy Springs
- Kimley-Horn and Associates, Inc.

Abbotts Bridge Road (SR 120)



Project Type:
Roadway Widening

Project Description:
Widen to 4 lanes and add median from Parsons Road (east of Medlock Bridge Road) to Peachtree Industrial Boulevard (including bicycle and pedestrian improvements)

Calculated Cost:
\$28,000,000

Notes:

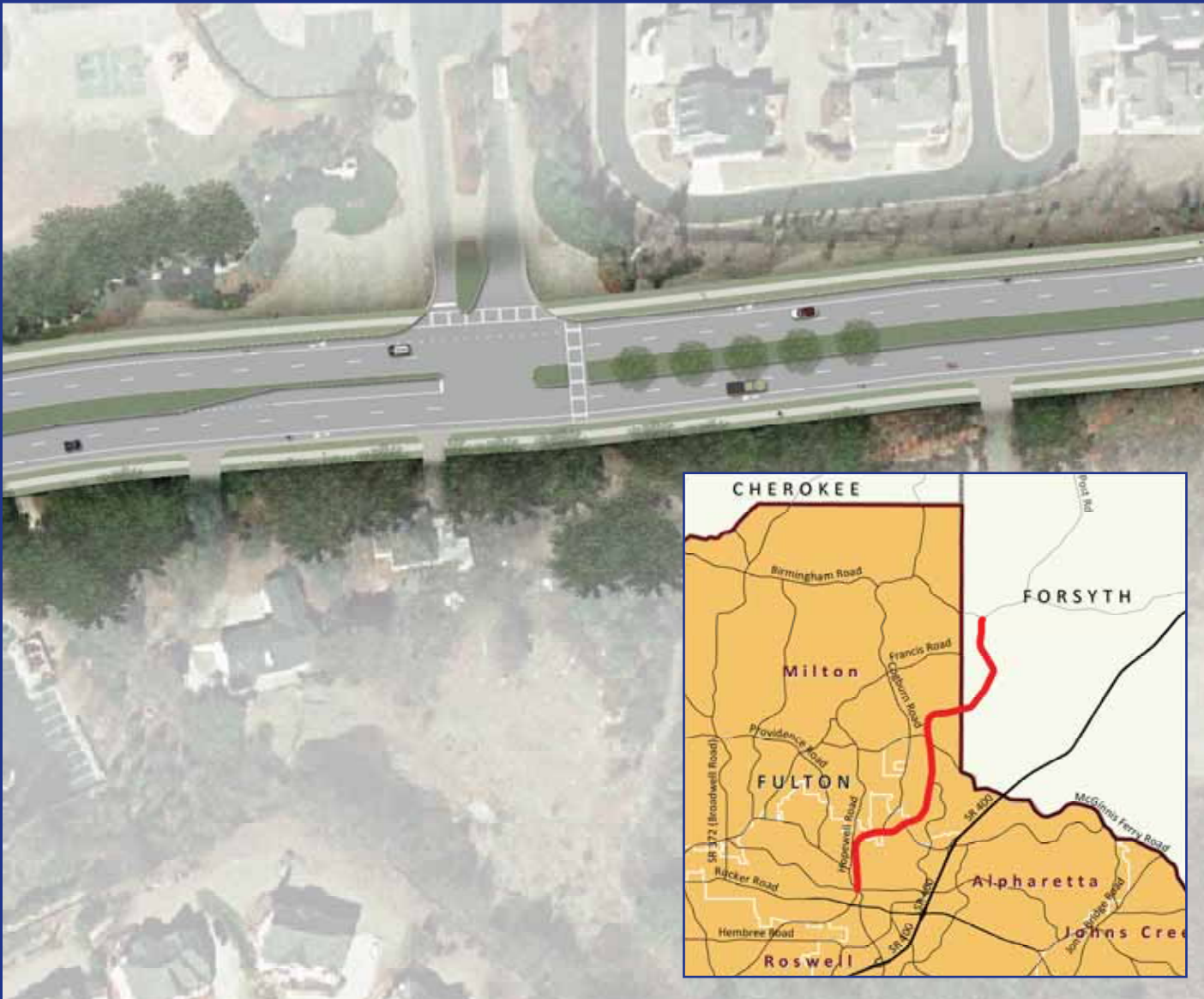
- 5' sidewalk and buffer may vary
- 5' bike lanes may be replaced with multi-use sidepath
- Median width may vary

North Fulton
TRANSPORTATION RESOURCE
IMPLEMENTATION PROGRAM



- Alpharetta
- Johns Creek
- Milton
- Atlanta Regional Commission
- Mountain Park
- Roswell
- Sandy Springs
- Kimley-Horn and Associates, Inc.

Main Street/Cumming Highway (SR 9)



Project Type:

Roadway Widening

Project Description:

Widen to 4 lanes and add median from Hamby Road in Forsyth County to Academy Street (includes bicycle and pedestrian improvements)

Calculated Cost:

\$119,000,000

Notes:

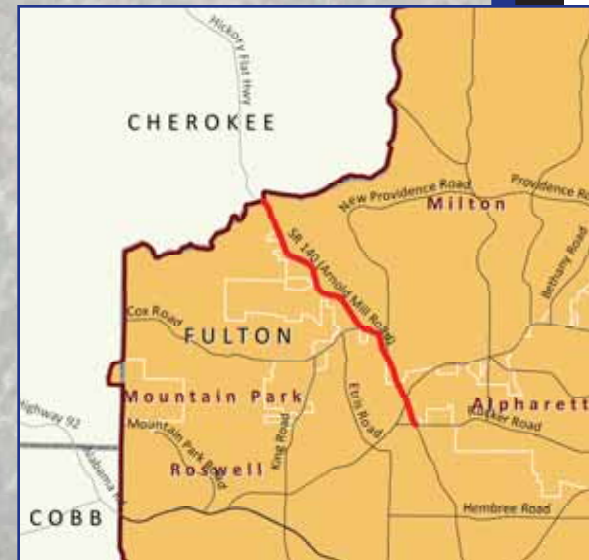
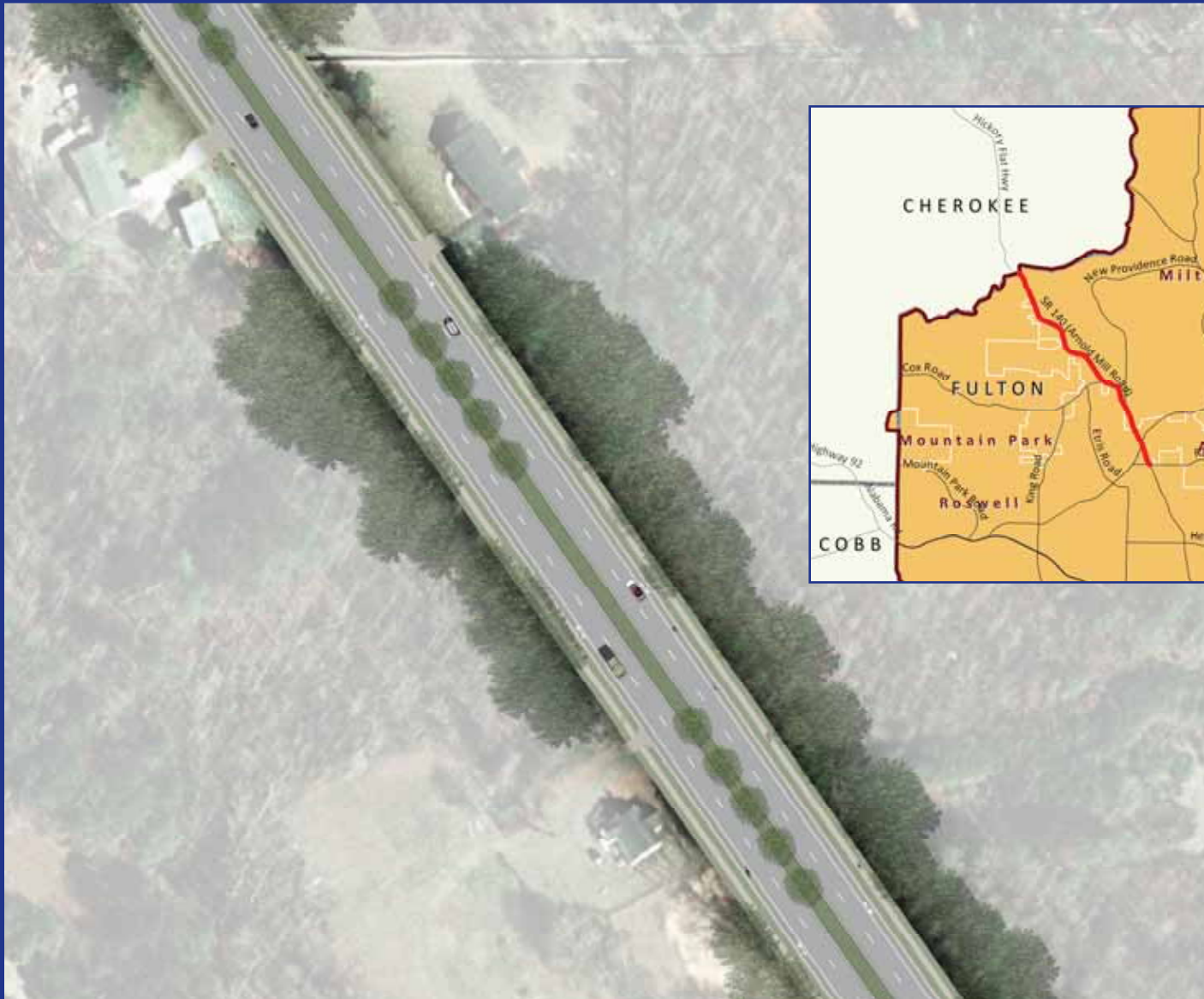
- 5' sidewalk and buffer may vary
- 5' bike lanes may be replaced with multi-use sidepath
- Median width may vary

North Fulton
TRANSPORTATION RESOURCE
IMPLEMENTATION PROGRAM



- Alpharetta
- Johns Creek
- Milton
- Atlanta Regional Commission
- Mountain Park
- Roswell
- Sandy Springs
- Kimley-Horn and Associates, Inc.

Arnold Mill Road (SR 140)



Project Type:
Roadway Widening

Project Description:
Widen to 4 lanes and add median from Cherokee County to Rucker Road (includes bicycle and pedestrian improvements)

Calculated Cost:
\$46,000,000

Notes:

- 5' sidewalk and buffer may vary
- 5' bike lanes may be replaced with multi-use sidepath
- Median width may vary

North Fulton
TRANSPORTATION RESOURCE
IMPLEMENTATION PROGRAM



- Alpharetta
- Johns Creek
- Milton
- Atlanta Regional Commission
- Mountain Park
- Roswell
- Sandy Springs
- Kimley-Horn and Associates, Inc.

Houze Road (SR 140) and Rucker Road



Project Type:

Operational/Access Improvements

Project Description:

Enhance Rucker Road to become a divided two-lane cross-section with a grass swale median and turn lanes from Hardscrabble Road to Wills Road. Enhance Houze Road (SR 140) to become a divided two-lane cross-section with a grass swale median and turn lanes from Rucker Road to Mansell Road. These improvements should be implemented prior to the widening of Arnold Mill (SR 140). Includes bicycle and pedestrian improvements.

Calculated Cost:

\$36,000,000

Notes:

- 5' sidewalk and buffer may vary
- 5' bike lanes may be replaced with multi-use sidepath
- Median width may vary

North Fulton

TRANSPORTATION RESOURCE

IMPLEMENTATION PROGRAM



- Alpharetta
- Johns Creek
- Milton
- Atlanta Regional Commission
- Mountain Park
- Roswell
- Sandy Springs
- Kimley-Horn and Associates, Inc.

Atlanta Street (SR 9)



Project Type:

Roadway Widening

Project Description:

Remove reversible lanes from Marietta Highway to Riverside Road/Azalea Drive and widen to 4 lanes; Includes 2 roundabouts (at Jones Drive and King Street/Chattahoochee Street)

Calculated Cost:

\$12,000,000

Notes:

- 5' sidewalk and buffer may vary
- Bike facilities provided will vary based on right-of-way constraints
- Median width may vary
- Does not include new bridge at Vickery Creek or grade separation of intersection with Riverside Road/Azalea Drive)

North Fulton

TRANSPORTATION RESOURCE

IMPLEMENTATION PROGRAM



- | | |
|------------------------------------|-----------------|
| ▪ Alpharetta | ▪ Mountain Park |
| ▪ Johns Creek | ▪ Roswell |
| ▪ Milton | ▪ Sandy Springs |
| ▪ Atlanta Regional Commission | |
| ▪ Kimley-Horn and Associates, Inc. | |

Windward Parkway



Project Type:

Roadway Widening

Project Description:

Widen to 6 lanes from Deerfield Parkway to Union Hill Road (includes bicycle and pedestrian improvements)

Calculated Cost:

\$40,000,000

Notes:

- 5' sidewalk and buffer may vary
- 5' bike lanes may be replaced with multi-use sidepath
- Median width may vary

North Fulton
TRANSPORTATION RESOURCE
IMPLEMENTATION PROGRAM



- Alpharetta
- Johns Creek
- Milton
- Atlanta Regional Commission
- Mountain Park
- Roswell
- Sandy Springs
- Kimley-Horn and Associates, Inc.

Hardscrabble Road



Project Type:

Operational/Access Improvements

Project Description:

Enhance facility to become a divided two-lane cross-section with a grass swale median and turn lanes from SR 92 to Crabapple Road (includes bicycle and pedestrian improvements)

Calculated Cost:

\$16,000,000

Notes:

- 5' sidewalk and 5' buffer may vary
- Potential 10' sidepath on one side
- 5' bike lanes may be excluded in lieu of sidepath



North Fulton TRANSPORTATION RESOURCE IMPLEMENTATION PROGRAM

- Alpharetta
- Johns Creek
- Milton
- Atlanta Regional Commission
- Kimley-Horn and Associates, Inc.
- Mountain Park
- Roswell
- Sandy Springs



McGinnis Ferry Road



Project Type:
Roadway Widening

Project Description:
Widen to 4 lanes and add median from Union Hill Road to Sargent Road (includes bicycle and pedestrian improvements)

Calculated Cost:
\$57,000,000

Notes:

- 5' sidewalk and buffer may vary
- 5' bike lanes may be replaced with multi-use sidepath
- Median width may vary

North Fulton
TRANSPORTATION RESOURCE
IMPLEMENTATION PROGRAM



- Alpharetta
- Johns Creek
- Milton
- Atlanta Regional Commission
- Mountain Park
- Roswell
- Sandy Springs
- Kimley-Horn and Associates, Inc.

Hammond Drive



Project Type:

Roadway Widening

Project Description:

Widen to 4 lanes from Roswell Road (SR 9) to Glenridge Drive and widen to 6 lanes from GA 400 to the DeKalb County border. Install bicycle lanes and sidewalks on both sides where widening occurs. Infill gaps in existing sidewalk from Mount Vernon Highway to Roswell Road (SR 9) and Glenridge Drive to GA 400 to create a continuous sidewalk network.

Calculated Cost:

\$29,000,000

Notes:

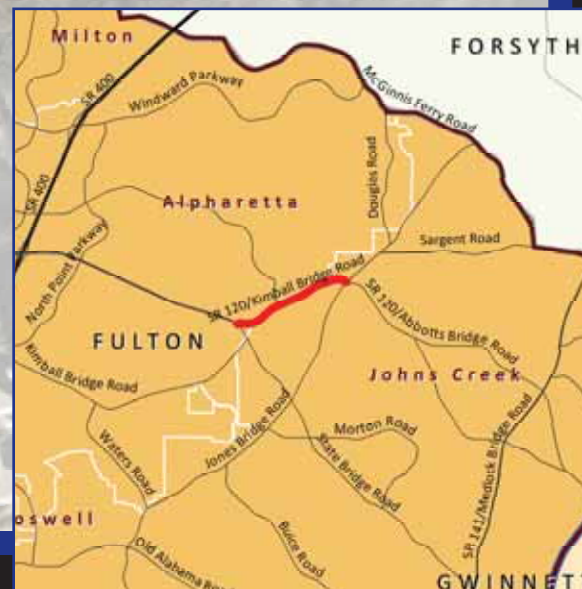
- 5' sidewalk and buffer may vary
- 5' bike lanes may be replaced with multi-use sidepath
- Median width may vary

North Fulton
TRANSPORTATION RESOURCE
IMPLEMENTATION PROGRAM



- Alpharetta
- Johns Creek
- Milton
- Atlanta Regional Commission
- Mountain Park
- Roswell
- Sandy Springs
- Kimley-Horn and Associates, Inc.

Kimball Bridge Road (SR 120)



Project Type:

Roadway Widening

Project Description:

Widen to 4 lanes and add median from Old Milton Parkway (SR 120) to Jones Bridge Road (includes bicycle and pedestrian improvements)

Calculated Cost:

\$21,000,000

Notes:

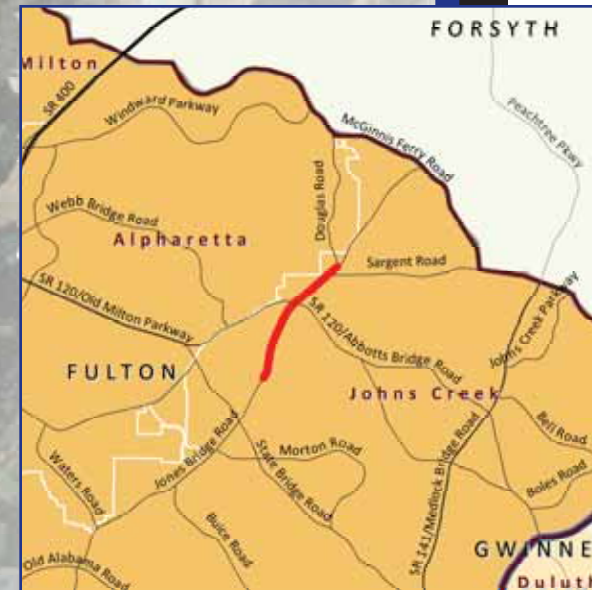
- 5' sidewalk and buffer may vary
- 5' bike lanes may be replaced with multi-use sidepath
- Median width may vary

North Fulton
TRANSPORTATION RESOURCE
IMPLEMENTATION PROGRAM



- Alpharetta
- Johns Creek
- Milton
- Atlanta Regional Commission
- Mountain Park
- Roswell
- Sandy Springs
- Kimley-Horn and Associates, Inc.

Jones Bridge Road



Project Type:
Roadway Widening

Project Description:
Widen to 4 lanes from Taylor Road to Douglas Road (includes bicycle and pedestrian improvements)

Calculated Cost:
\$28,000,000

Notes:

- 5' sidewalk and buffer may vary
- 5' bike lanes may be replaced with multi-use sidepath
- Median width may vary

North Fulton
TRANSPORTATION RESOURCE
IMPLEMENTATION PROGRAM



- Alpharetta
- Johns Creek
- Milton
- Atlanta Regional Commission
- Mountain Park
- Roswell
- Sandy Springs
- Kimley-Horn and Associates, Inc.

