



Water Resources Division (WRD)


Mayor and Council
Work Session

February 27, 2012



Updates

- Well Project
- Water Distribution
- Water Treatment Plant
- Financial Analysis





Well Project

- Contractor mobilizing
- Groundbreaking Ceremony - March 6, 2012
Bus leaves City Hall at 10:30am
- Permitted production is 0.16 mgd
- Anticipated completion - October 2012



Water Distribution

- Awarded "Distribution System of the Year" by GAWP in 2011
- State required audit of water utility
 - For produced and distributed water
 - Complete and will be submitted March 1, 2012
- Installation of the AMI is complete; implementation is on-going



Dobbs Drive Improvements Overview

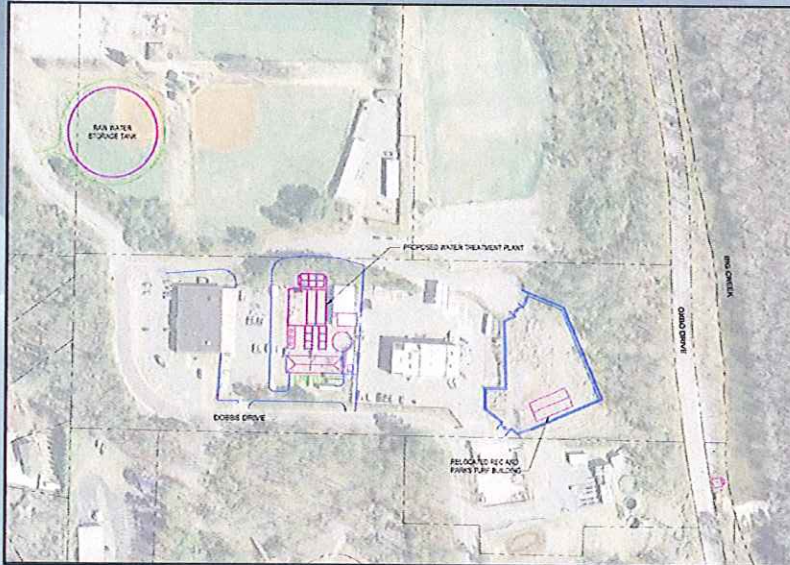
- Permitting
- Water production
- Rec & Parks
- Phasing
- Public Meeting



Water Treatment Plant

- Received final permit for 2.8 mgd from EPD – December 2011
- High rate 1.5 mgd permit preliminarily approved – Expected March 2012
- Plant expansion (more production out of Big Creek)
- Council authorized conceptual work - November 2011
- Preliminary engineering underway

Water Treatment Plant



Raw Water Storage Tank Example





LEED Certified Building Example



Why Are We Recommending This and How Much Will It Cost?

- Invest in:
 - Security of our future water supply
 - A modern reliable facility
 - Reduce risk of future rate increases
- OR, continue to:
 - Pay \$500,000 per year in water purchases
 - Pay \$0 to \$1,000,000 every few years in repairs
 - Risk future rate increases by others

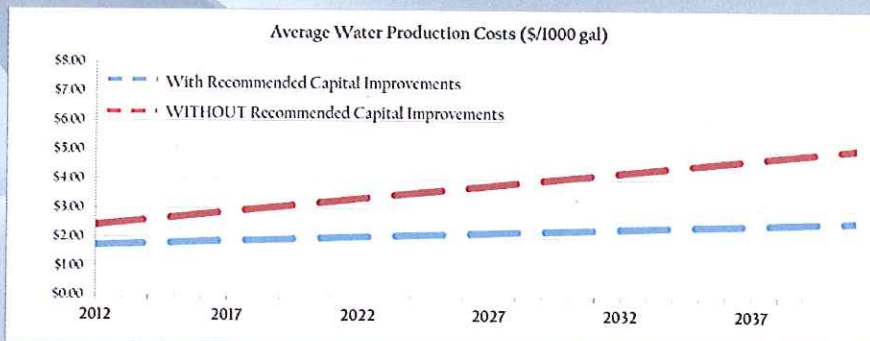


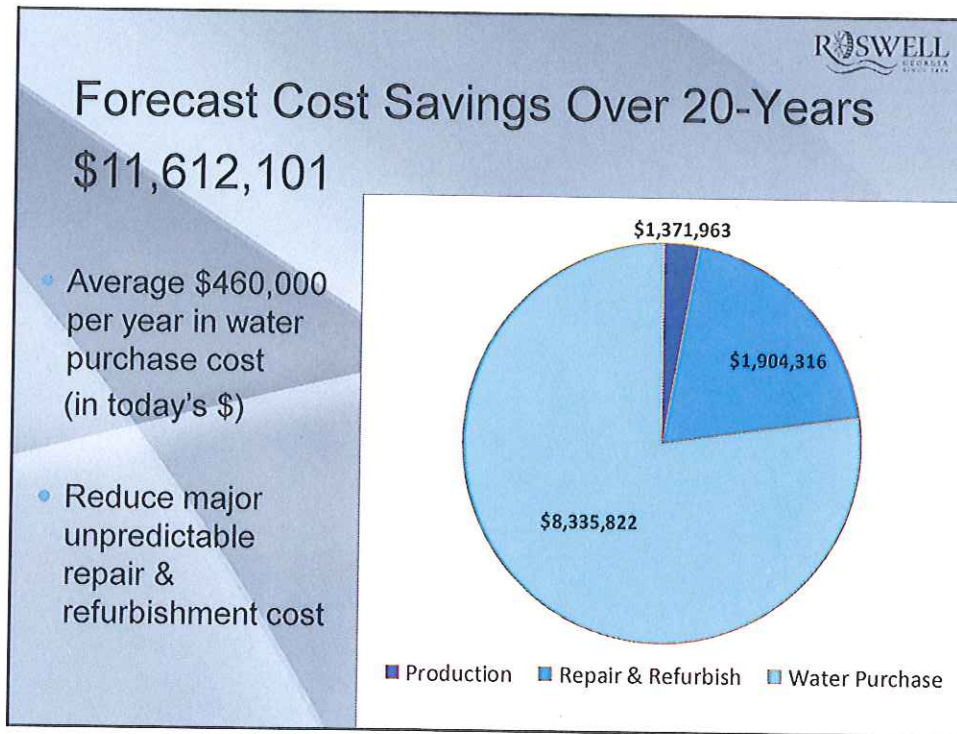
Financial Analysis

- Total Project Cost \$15,863,800
- Reserves \$1,300,000
- Proposed GEFA Loan Amount \$14,563,800
 - Interest 1.13%
 - Term 20 years
- Annual Debt Service \$813,914
- \$1.00/month on base starting FY13



Long-Term Reduction in Production Cost Funds Vast Majority of Plan





ROSWELL
GEORGIA
SINCE 1848

Next Steps

- Public meeting/open house
 - March 19, 2012 – City Hall Rm. 220
 - Afternoon session – 12:00 pm – 1:30 pm
 - Evening session – 5:00 pm – 6:30 pm
- Continuing engineering studies and preparing to apply for GEFA loan
- Consideration at April committee to apply for GEFA loan