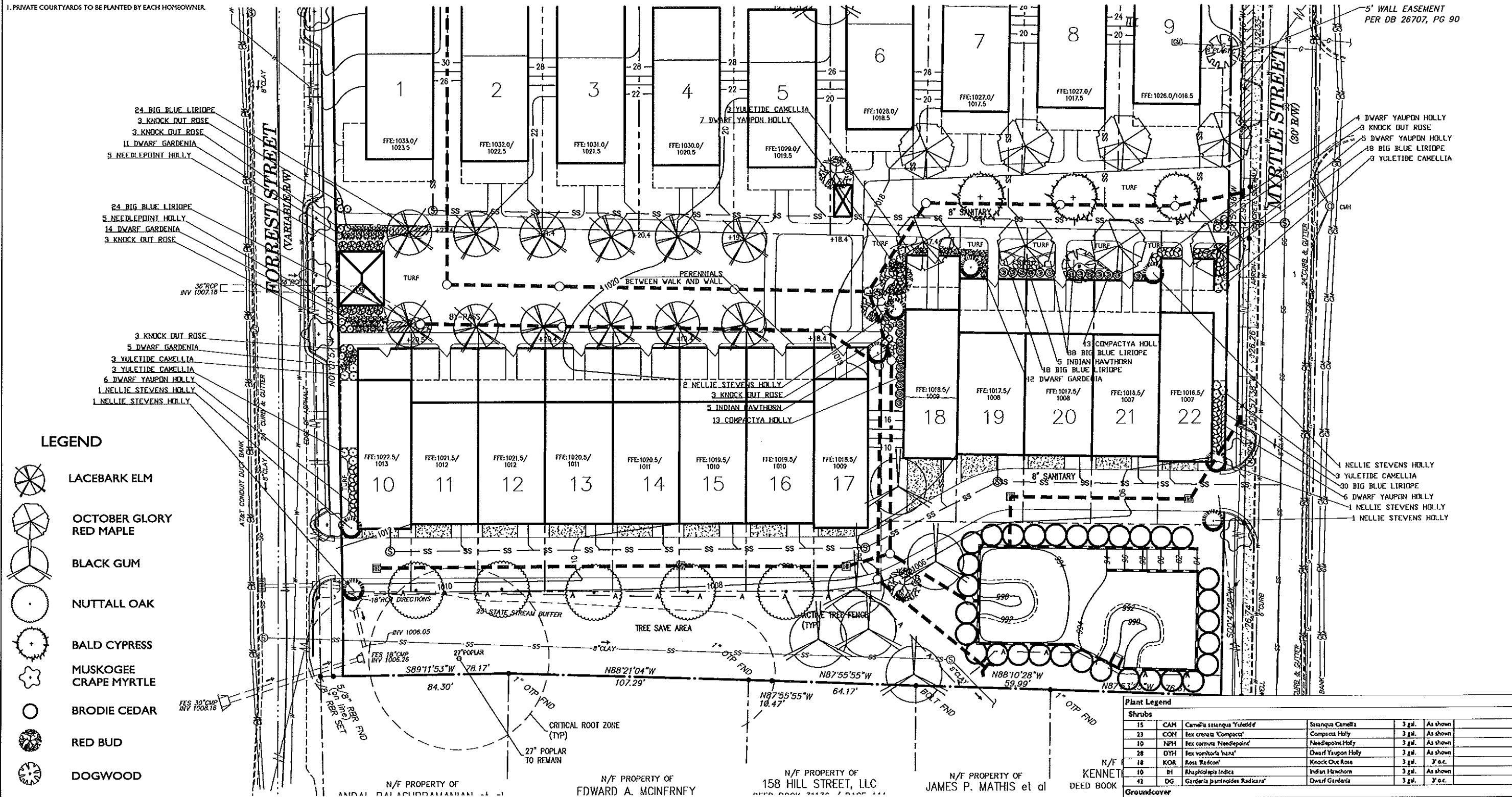
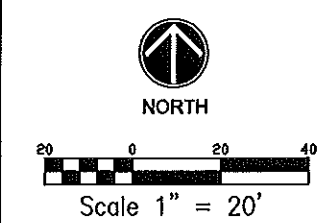


NOTE:  
1. PRIVATE COURTYARDS TO BE PLANTED BY EACH HOMEOWNER



- LEGEND**
- LACEBARK ELM
  - OCTOBER GLORY RED MAPLE
  - BLACK GUM
  - NUTTALL OAK
  - BALD CYPRESS
  - MUSKOGEE CRAPE MYRTLE
  - BRODIE CEDAR
  - RED BUD
  - DOGWOOD

Plant Legend			
Shrubs			
15	CAM	Camellia sasanqua 'Yuletide'	Sasanqua Camellia 3 gal. As shown
23	COH	Ilex crenata 'Compacta'	Compacta Holly 3 gal. As shown
10	NPH	Ilex cornuta 'Needlepoint'	Needlepoint Holly 3 gal. As shown
28	DYH	Ilex vomitoria 'Inca'	Dwarf Yaupon Holly 3 gal. As shown
18	KOR	Rosa 'Racoon'	Knock Out Rose 3' o.c.
10	IH	Rhus typhina 'Indica'	Indian Hawthorn 3 gal. As shown
42	DG	Gardenia jasminoides 'Radicans'	Dwarf Gardenia 3 gal. 3' o.c.
Groundcover			
202	BBL	Liriope muscari 'Big Blue'	Liriope 4" pot 18" o.c.



Landscape Plan

# FORREST COMMONS

Roswell, Georgia

Job #12-3385.10

**A:EC**

Civil Engineering  
Land Planning  
Landscape Architecture

Water Resources  
Property Services  
Arborist Services

50 Warm Springs Circle  
Roswell • Georgia • 30075  
(770)641-1942 • www.aecatl.com

May 7, 2013