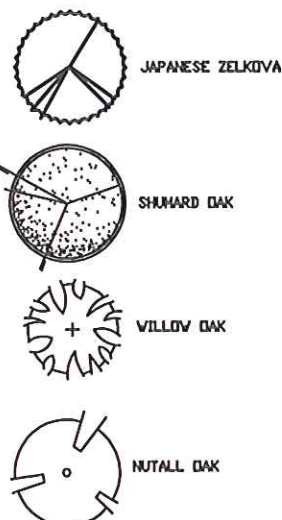
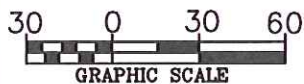


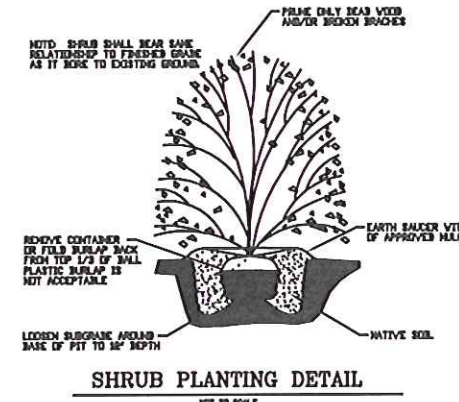
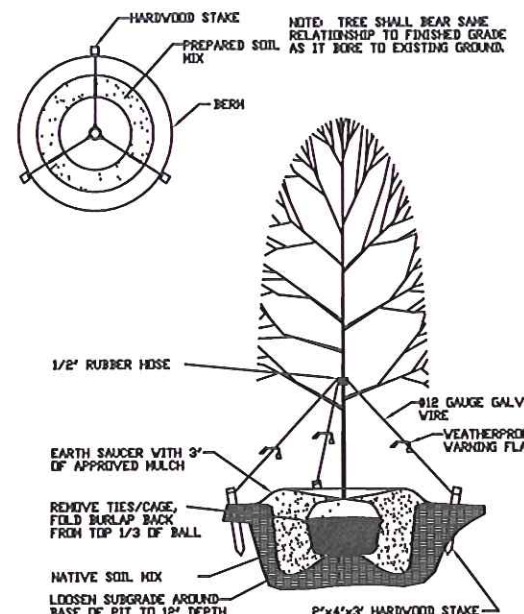
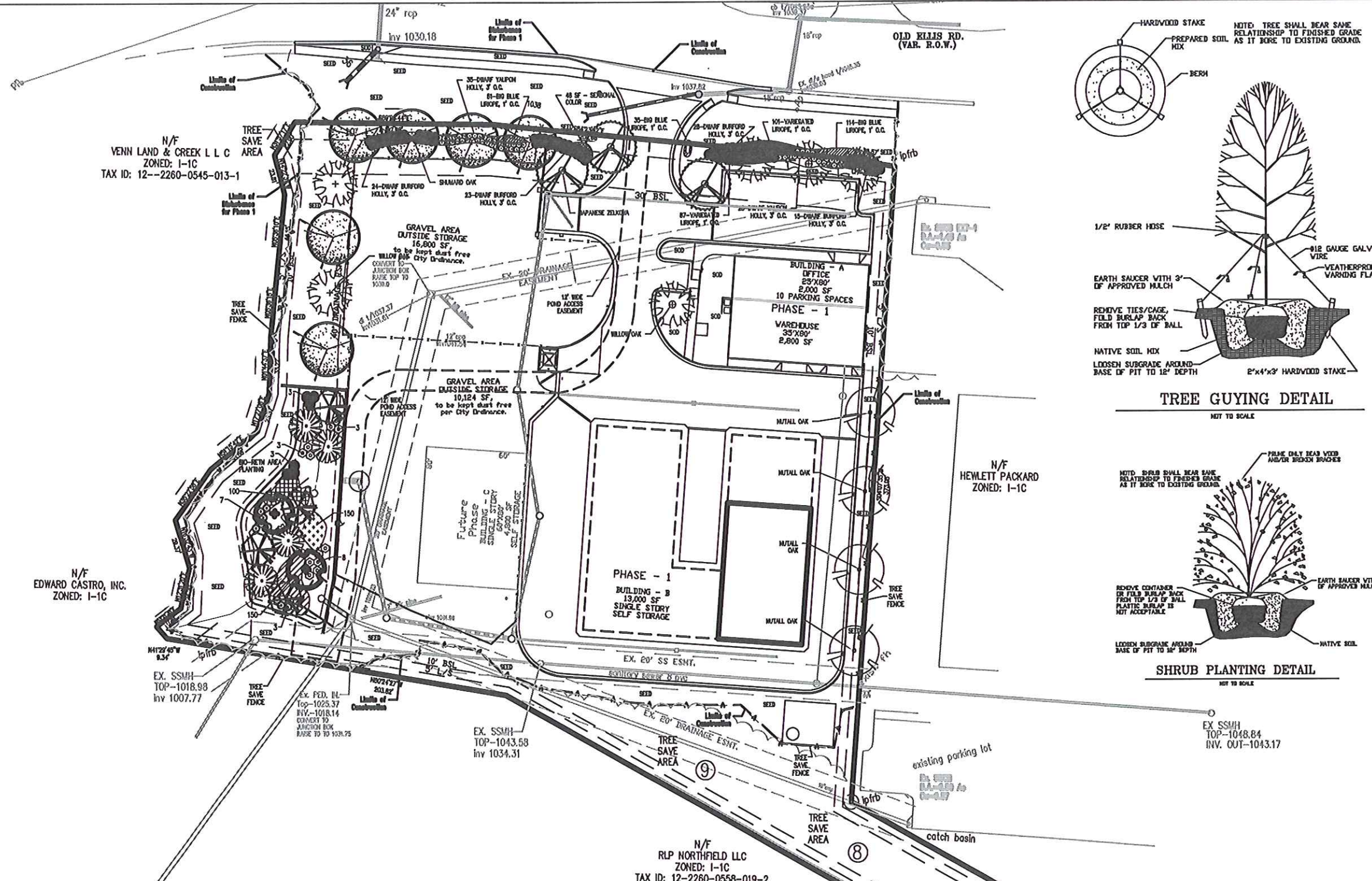
TREE LEGEND



BIORETENTION PLANTS LEGEND



PLANT SCHEDULE							
SYM.	QTY/AS	BOTANICAL NAME	COMMON PLANT NAME	SIZE	SPACING	REMARKS	TOTAL UNITS
49 TREES							
	3	ZELKOVA SERRATA	ZELKOVA	4" CAL	AS SHOWN	B & B	0.9
	4	QUERCUS NUTTALLI	NUTTALL OAK	4" CAL	AS SHOWN	B & B	0.9
	6	QUERCUS PHELLOS	WILLOW OAK	4" CAL	AS SHOWN	B & B	0.9
	6	QUERCUS SHUMARDII	SHUMARD OAK	4" CAL	AS SHOWN	B & B	0.9
							TOTAL
							22.1
SHRUBS AND GROUND COVER							
	188	LIRIOPE MUSCARI 'VARIGATA'	VARIEGATED LIRIOPE	4" POT			
	200	LIRIOPE MUSCARI	BIG BLUE	4" POT			
	90	ILEX CORNUTA BURFORDII	DWARF BURFORD HOLLY	3 GAL			
	63	ILEX VOMITORIA NANA	DWARF YAUPON HOLLY	3 GAL			
	48 SF	SEASONAL COLOR	PLANT AS REQUIRED	4" POT			
BIO-RETENTION PLANTING							
	4	BALD CYPRESS	TAXODIUM DISTICUM	2" CAL	AS SHOWN	B & B	0.5
	4	BETULA NIGRA	RIVER BIRCH	2" CAL	AS SHOWN	B & B	0.5
	2	SALIX NIGRA	BLACK WILLOW	2" CAL	AS SHOWN	B & B	0.5
	8	ILEX VERTICILLATA	WINTERBERRY	3 GAL	AS SHOWN		
	12	CEPHALANTHUS OXIDENTALIS	BUTTONBUSH	3 GAL	AS SHOWN		
	10	ITEA VIRGINICA	VIRGINIA SWEETSPIRE	3 GAL	AS SHOWN		
	150		WOOL GRASS	1 GAL	2" O.C.		
	150		FOUNTAIN GRASS	1 GAL	2" O.C.		
	100		SO. BLUE FLAG IRIS	1 GAL	2" O.C.		



OVERALL TREE ORDINANCE CALCULATIONS
 DENSITY CALCULATIONS ARE AS FOLLOWS:
 OVERALL TOTAL SITE ACREAGE = 3.33 AC.
 SITE DENSITY FACTOR (SDF) = 30 UNITS x 3.33 AC. = 99.9 SDF UNITS
 EXISTING DENSITY FACTOR (EDF) = 78.2 EDF UNITS
 REQUIRED DENSITY FACTOR (RDF) = 99.9 SDF UNITS - 78.2 EDF UNITS = 21.60 UNITS
 ADDITIONAL PROPOSED UNITS- 23.0 UNITS

TREE SAVE AREA SAMPLING CALCULATIONS
 TREE SAMPLING METHOD WAS PERFORMED BY A REGISTERED LANDSCAPE ARCHITECT. DATA WAS COLLECTED BY USING THE FORESTRY SAMPLING METHOD. THIS METHOD USES AN AMBER EXACT FACTOR PRISM FOR BASAL AREA FACTOR (BAF) OF 20.
 TREE SAVE AREA = 21,314 SF or 0.49 ACRES
 AREA # X BAF 10 UNITS/ACRE
 7 X 20 = 140
 8 X 20 = 160
 9 X 20 = 180
 AVERAGE = 480 / 3 = 160 UNITS/AC. X 0.49 ACRES = 78.20 EDF UNITS



TREE ORDINANCE PLAN

ROADWORX OFFICEWAREHOUSE
 CITY OF ROSWELL
 FULTON COUNTY, GEORGIA
 LL 558, 1ST DIST., 2ND SEC.

NO.	REVISIONS	DATE
1	PER CITY COMMENTS	7-11-12
2	PER CLIENT COMMENTS	2-5-13

PROJECT NO. - 12-3299.10
 DRAWN - BDR
 DESIGNED - BDR
 CHECKED -
 DATE-4/3/12

SHEET
C 7.0