

**City of Roswell Recreation and Parks Department
Old Mill Park
Machine Building Restrooms**

Roswell, Georgia

Project No.: 021001



May 24, 2011

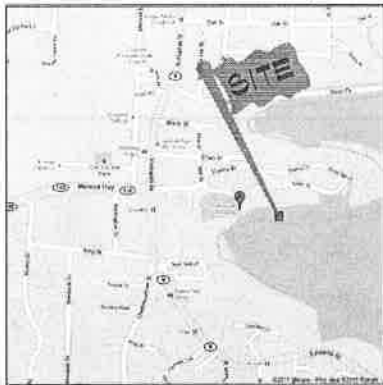
Project Data

Building Area: 384.00 sf

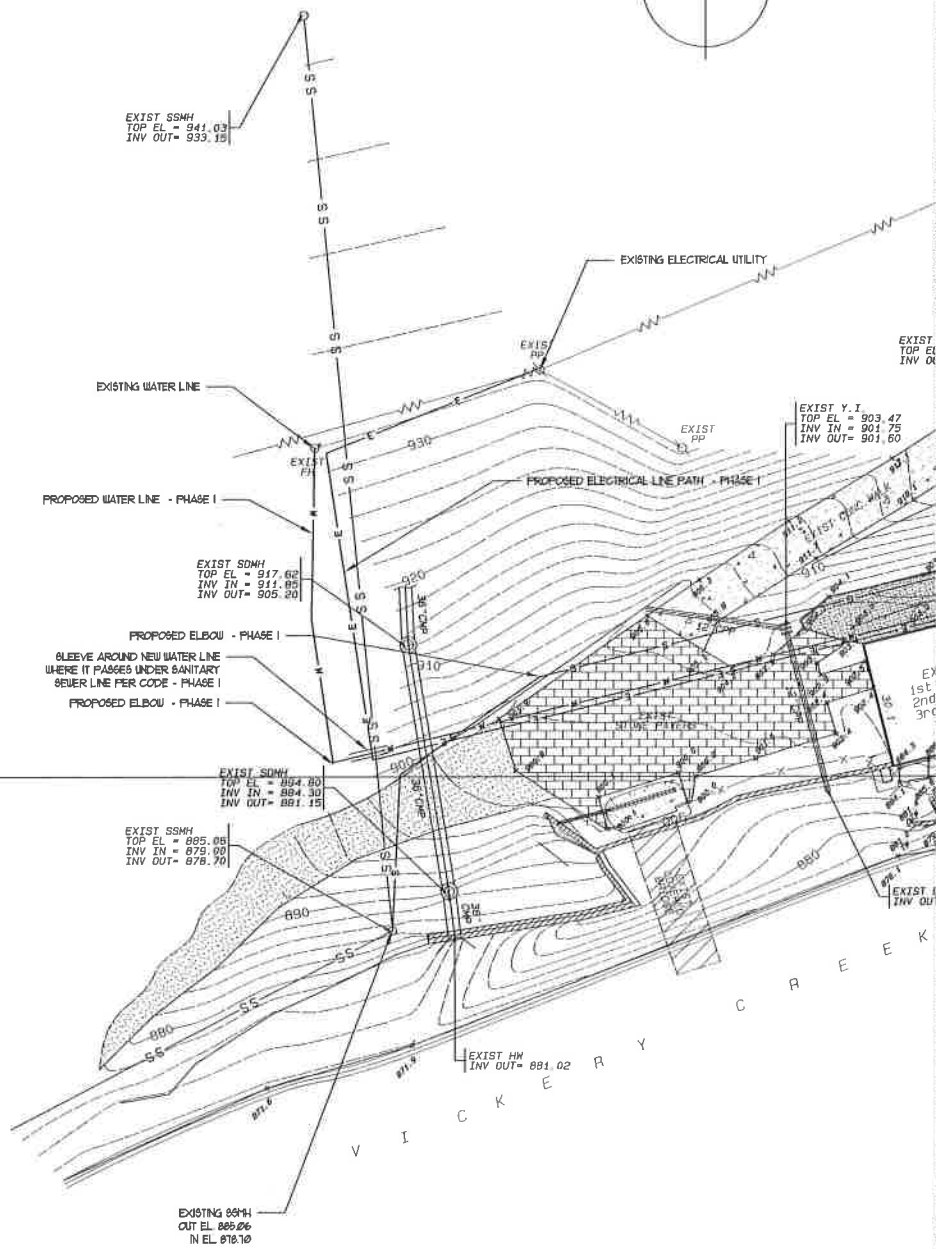
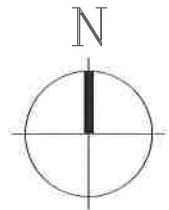


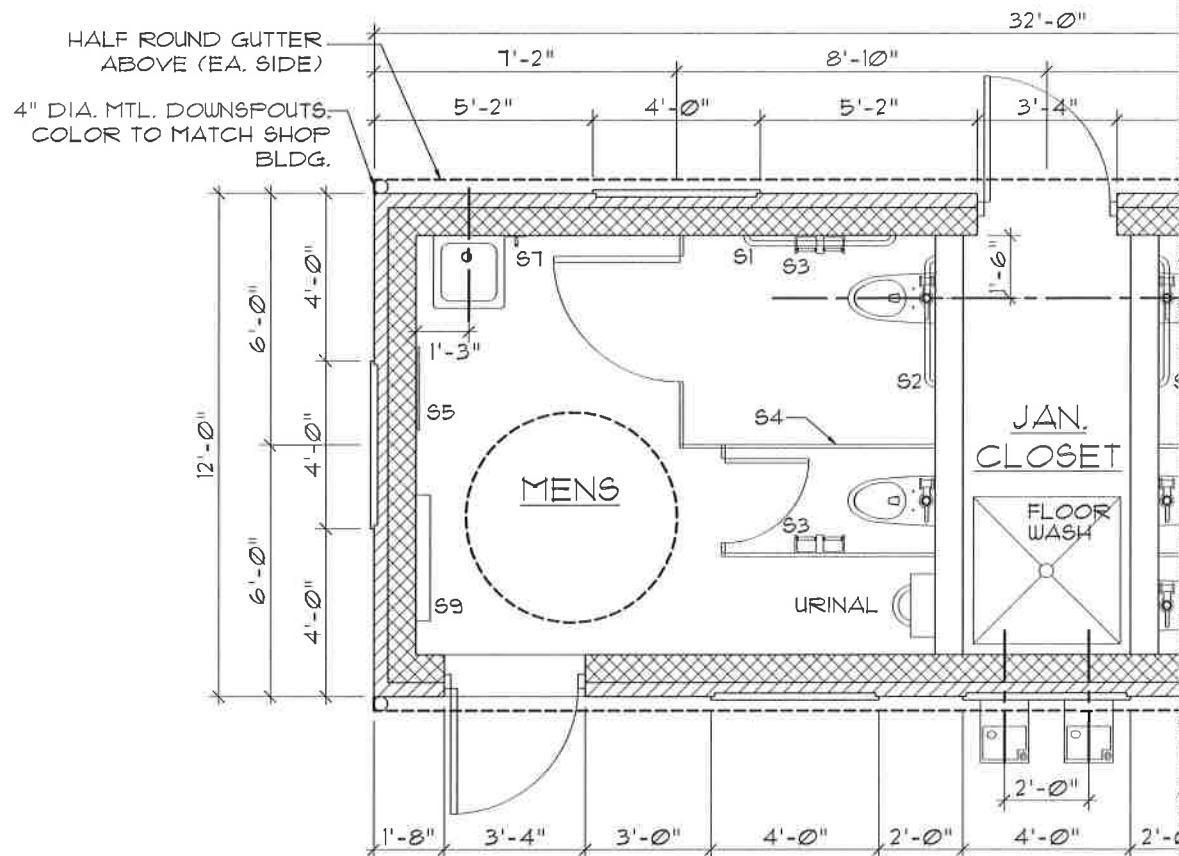


ATA / ADAMS TORD • Associates
Architects planners consultants



LOCATION MAP





INTERIOR SPECIALTIES/TOILET ROOM ACCESSORIES

- S1. 36" GRAB BAR: 1 1/2" DIA. STAINLESS STEEL WITH CONCEALED FASTENERS. BOBRICK #6206 X 36 (OR APPROVED EQUAL)
- S2. 42" GRAB BAR: 1 1/2" DIA. STAINLESS STEEL WITH CONCEALED FASTENERS. BOBRICK #6206 X 42 (OR APPROVED EQUAL)
- S3. TOILET PAPER HOLDERS: 1/2" THICK ALUMINUM BODY WITH VANDAL RESISTANT LOCKING DESIGN AND FASTENED TO WALL WITH STAINLESS STEEL VANDAL RESISTANT SCREWS. ONE (1) DOUBLE ROLL HOLDER PER STALL. BOBRICK #B-274460 (OR APPROVED EQUAL)
- S4. TOILET PARTITIONS AND DOORS: 1" THICK, WHITE, HIGH DENSITY POLYETHYLENE MOUNTED ON CONT. ALUMINUM BRACKETS AT WALLS AND PILASTERS. SYSTEM IS FLOOR MOUNTED. DOOR HINGES, SLIDE BOLTS, AND HARDWARE TO BE CHROME PLATED ZAMAC AND/OR STAINLESS STEEL.
- S5. MIRRORS: ONE PIECE CHANNEL FRAME MIRROR 24"x36" W/ ELECTROLYTICALLY COPPER-PLATED GLASS. BOBRICK #B-165-2436.
- S6. HAND DRYER: HANDS OFF AUTOMATIC, CAST COVER, SURFACE MOUNTED WHITE HAND DRYER 1500 WATTS, 60 HZ EXCEL MODEL ZL-W.
- S7. SOAP DISPENSER: TRIMLINE RECESSED SS STEEL BOBRICK MODEL B-306.
- S8. 18" GRAB BAR: 1 1/2" DIA. STAINLESS STEEL WITH CONCEALED FASTENERS. BOBRICK #6206 X 18 (OR APPROVED EQUAL)
- S9. BABY CHANGING STATION: HORIZONTAL (23"x34"x4") (ASTM, ADA, FDA, RN RATED)

* FINAL SELECTIONS TO BE APPROVED BY OWNER/ARCHITECT.

NOTES:

1. REFER TO SITE PLAN FOR