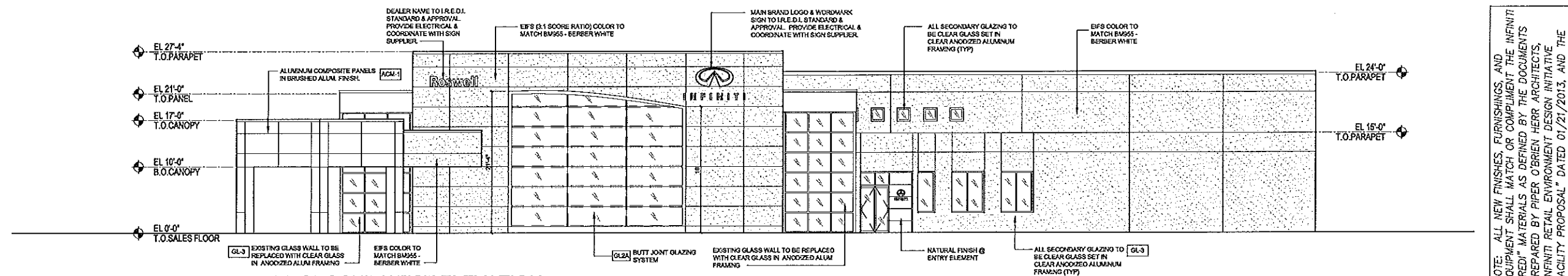


This drawing and the CAD file from which it has been generated are provided as an Instrument of service for this project. These documents are the sole property of the architect. Any use of these documents for purposes other than those associated with this project, without the expressed, written permission of the architect, is prohibited.

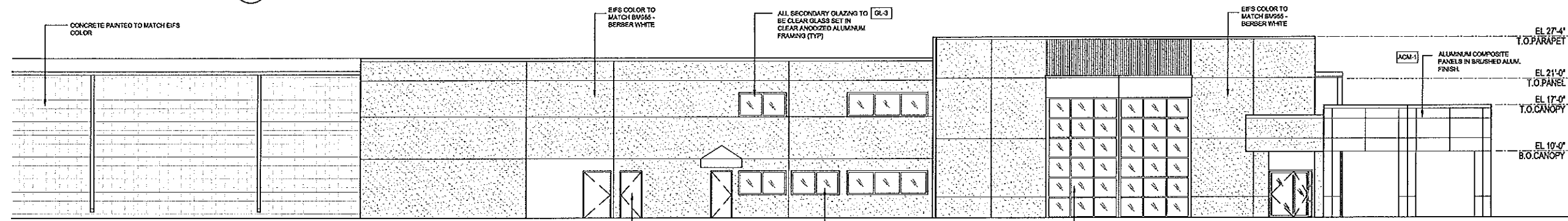


**ISSUANCES**

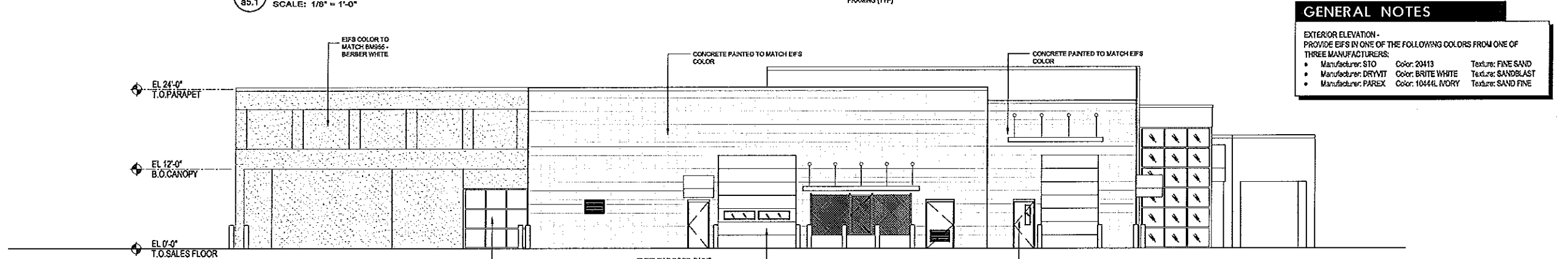
Owner Review	04/04/13
w/ Revisions	04/15/13
Nissan Review	05/01/13
Roswell DRB	05/07/13



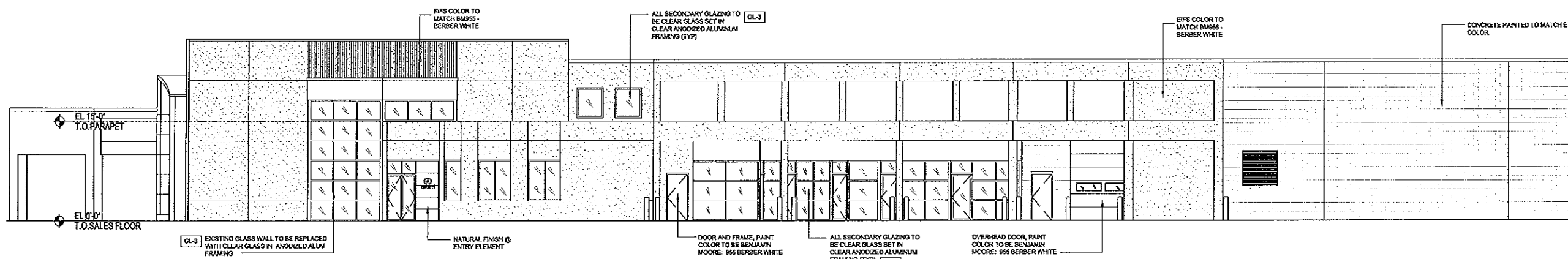
**1 PROPOSED WEST ELEVATION**  
a5.1 SCALE: 1/8" = 1'-0"



**2 PROPOSED NORTH ELEVATION**  
a5.1 SCALE: 1/8" = 1'-0"



**3 PROPOSED EAST ELEVATION**  
a5.1 SCALE: 1/8" = 1'-0"



**4 PROPOSED SOUTH ELEVATION**  
a5.1 SCALE: 1/8" = 1'-0"

**GENERAL NOTES**

EXTERIOR ELEVATION - PROVIDE EIFS IN ONE OF THE FOLLOWING COLORS FROM ONE OF THREE MANUFACTURERS:

• Manufacturer: STO	Color: 20413	Texture: FINE SAND
• Manufacturer: DRYVIT	Color: BRITE WHITE	Texture: SANDBLAST
• Manufacturer: PAREX	Color: 10444L IVORY	Texture: SAND FINE

I-REDI Alterations & Additions to:

**Roswell Infiniti**

11405 Alpharetta Highway, Roswell, Fulton County, GA 30076

Sheet Number:

**a5.1**

Date: April 4, 2013

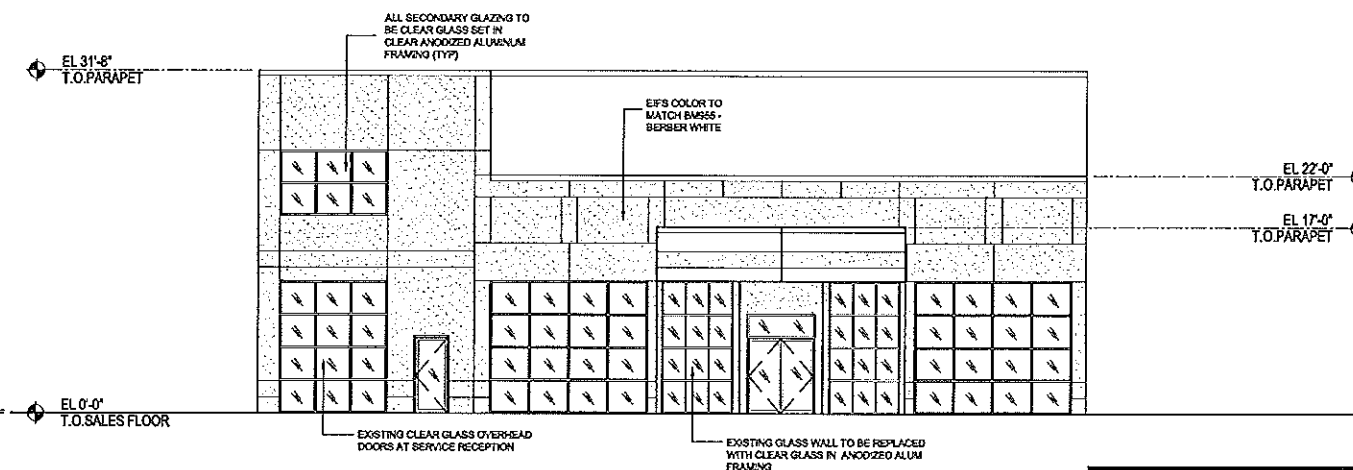
This drawing and the CAD file from which it has been generated are provided as an instrument of service for this project. These documents are the sole property of the architect. Any use of these documents for purposes other than those associated with this project, without the expressed, written permission of the architect, is prohibited.



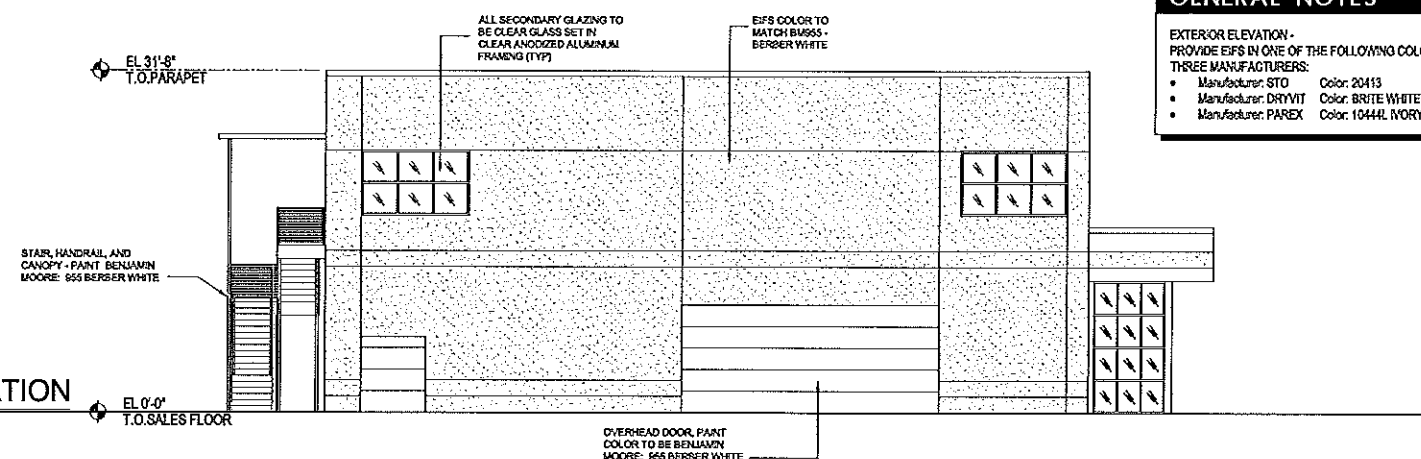
ISSUANCES

Owner Review 04/04/13  
w/ Revisions 04/15/13  
Nissan Review 05/01/13  
Roswell DRB 05/07/13

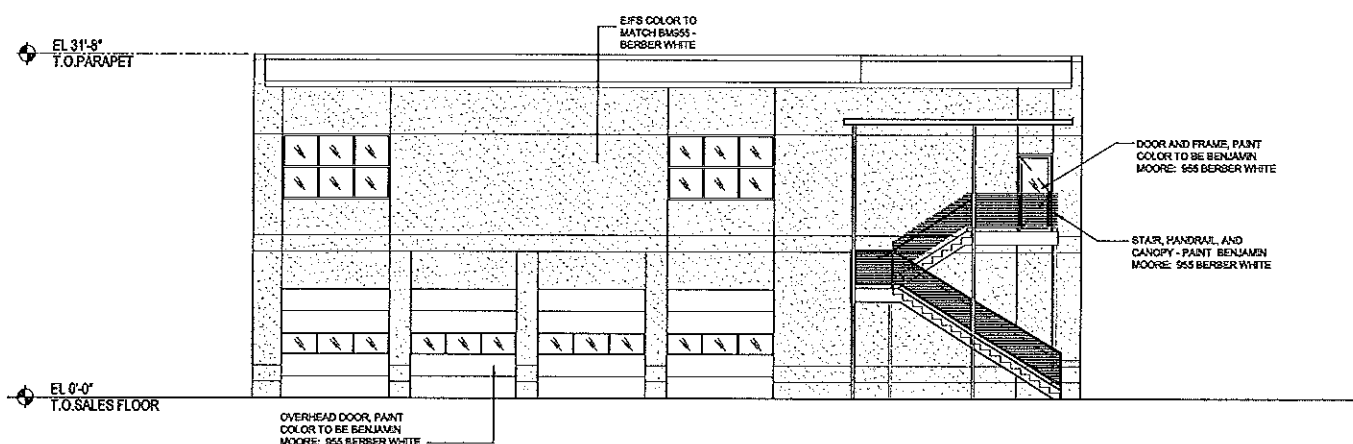
1 EXPRESS BLDG WEST ELEVATION  
65.2 SCALE: 1/8" = 1'-0"



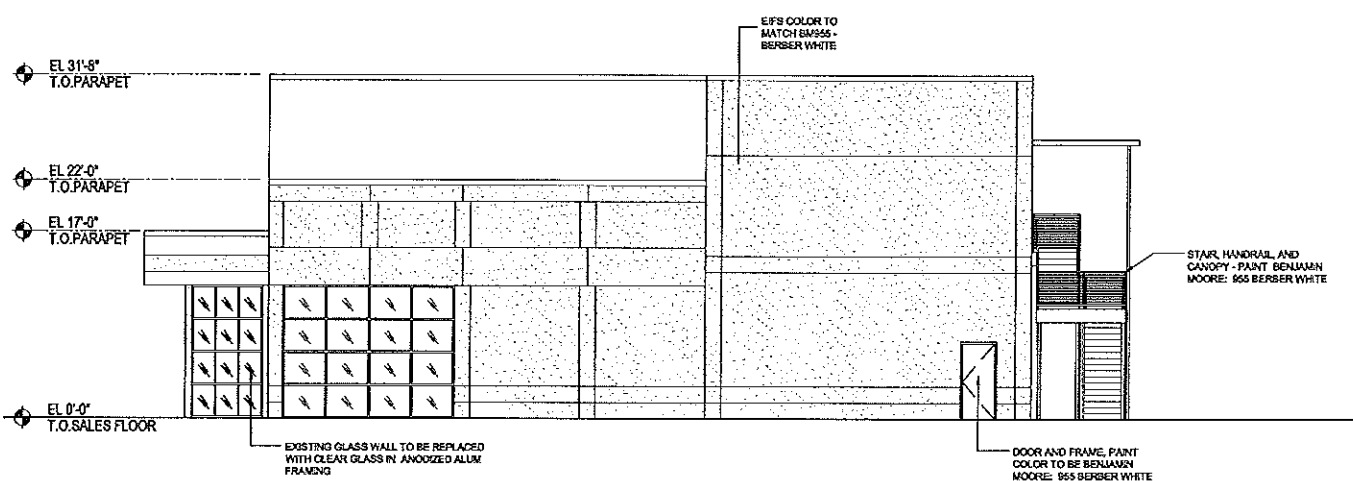
2 EXPRESS BLDG NORTH ELEVATION  
65.2 SCALE: 1/8" = 1'-0"



3 EXPRESS BLDG EAST ELEVATION  
65.2 SCALE: 1/8" = 1'-0"



4 EXPRESS BLDG SOUTH ELEVATION  
65.2 SCALE: 1/8" = 1'-0"



**GENERAL NOTES**

EXTERIOR ELEVATION - PROVIDE EFS IN ONE OF THE FOLLOWING COLORS FROM ONE OF THREE MANUFACTURERS:

- Manufacturer: STO Color: 20413 Texture: FINE SAND
- Manufacturer: DRYVIT Color: BRITE WHITE Texture: SANDBLAST
- Manufacturer: PAREX Color: 1044L IVORY Texture: SAND FINE

I-REDI Alterations & Additions to:  
**Roswell Inifinti**

11405 Alpharetta Highway, Roswell, Fulton County, GA 30076