

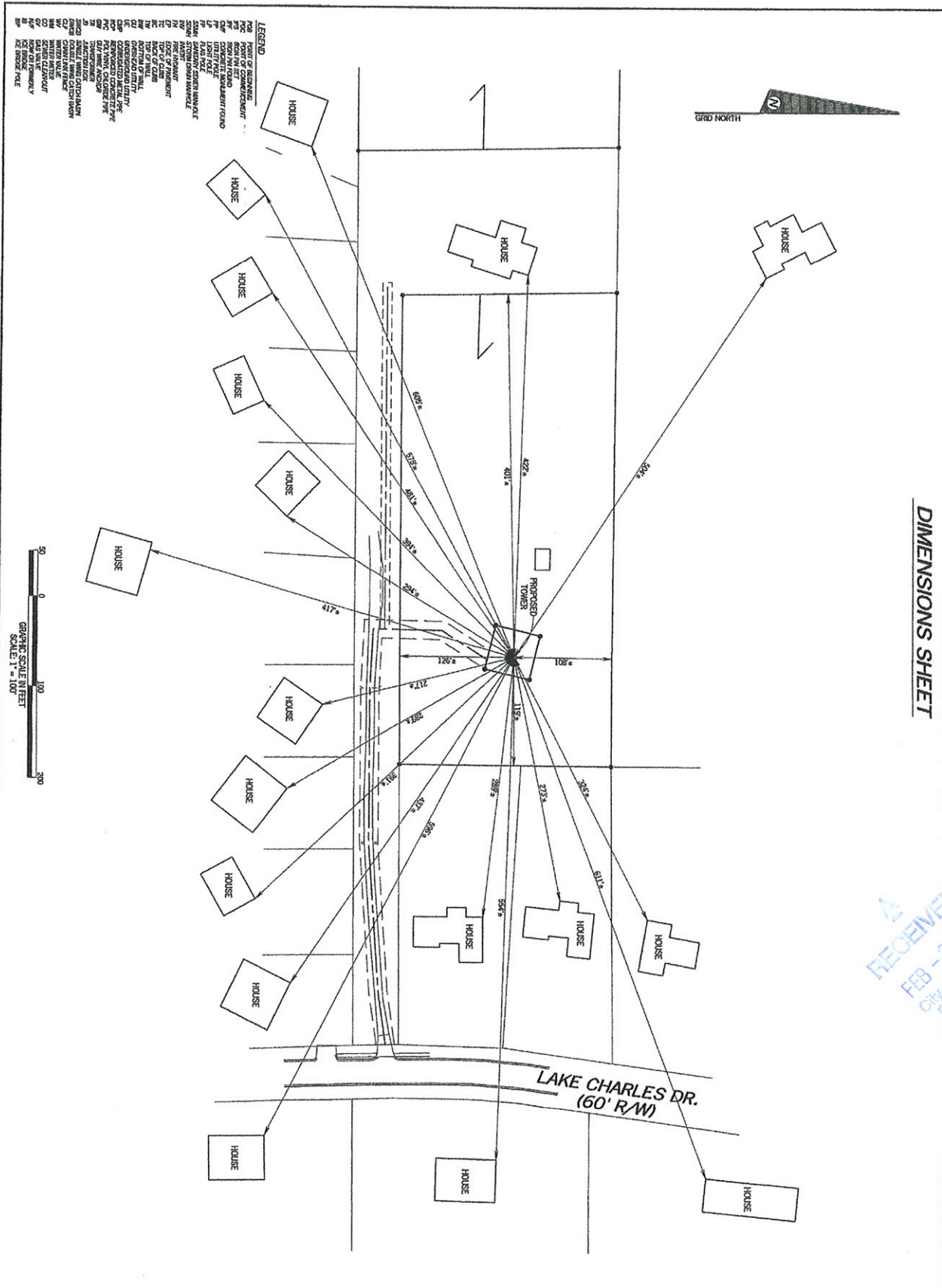
EXHIBIT E
SETBACKS TO PROPERTY LINES AND ADJOINING RESIDENTIAL STRUCTURES

SEE FOLLOWING PAGE



DIMENSIONS SHEET

RECEIVED
FEB - 2 2010
City of Roswell
Community Development Dept.



NO.	DATE	REVISION
1	1/26/2009	ADDED SURVEY AREA
2	01-05-2010	INVESTIGATE AREA
3	01-26-2010	MODIFIED TOWER

EASEMENT SURVEY PREPARED BY:
POINT TO POINT LAND SURVEYORS
 810 Jackson Street
 Locust Grove, Georgia 30248
 (p) 678.565.4440 (f) 678.565.4497
 (w) pointtopointsurvey.com



EASEMENT SURVEY PREPARED FOR:
Mobile
 T-MOBILE SOUTH, LLC
 FOUR CONCOURSE PARKWAY
 SUITE 300
 SANDY SPRING, GEORGIA 30378
 Phone (770) 450-3800
 Fax (770) 350-3049

"MOUNTAIN PARK"
 SITE NO.
 9A11.292-D
 LAND LOT 261
 1ST DISTRICT, 2ND SECTION
 FULTON COUNTY, GEORGIA
 DRAWN BY: NAW
 CHECKED BY: NAW
 APPROVED BY: NAW
 DATE: DECEMBER 18, 2009
 SHEET:
 2
 OF 3