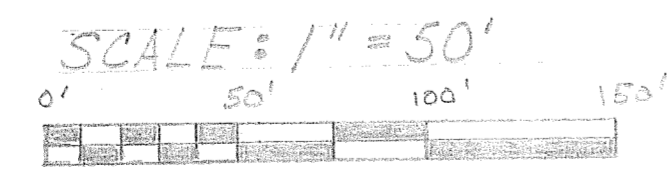
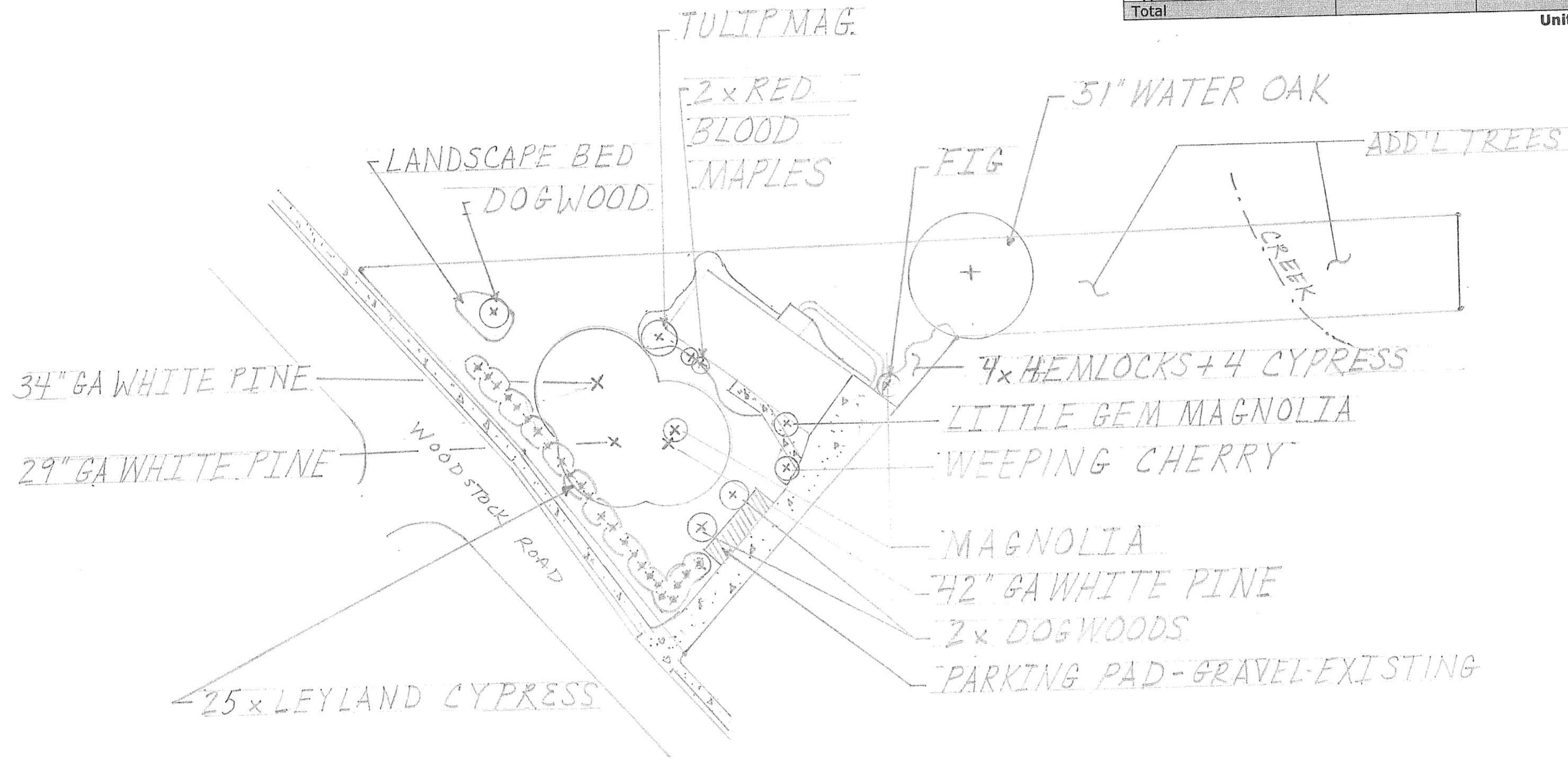


**Existing Tree Inventory/Density Units**

Note: All Trees will remain

Tree Type	DBH (Inches)	QTY	Density Unit Per Tree	Density - Extended
Water Oak	51"	1	10.5	10.5
Pine, GA White	42"	1	9.3	9.3
Pine, GA White	34"	1	8.1	8.1
Pine, GA White	29"	1	7.2	7.2
Cypress, Leyland	6"	25	2.4	60.0
Cherry, Weeping	6"	1	2.4	2.4
Magnolia, Little Gem	5"	1	2.0	2.0
Fig	4"	1	1.5	1.5
Hemlock	4"	1	1.5	1.5
Hemlock	3"	3	1.0	3.0
Japanese Maple, Blood Red	3"	2	1.0	2.0
Magnolia	3"	1	1.0	1.0
Magnolia, Tulip	3"	1	1.0	1.0
Dogwood	3"	2	1.0	2.0
Dogwood	2"	1	.5	.5
Dogwood	2"	1	.5	.5
Cypress, Blue Arizona	2"	1	.5	.5
<b>Total</b>				<b>115.5</b>

Units Required: .994 Acres x 30 = 30



**Tree Survey  
(All Existing)**  
 John Wilson  
 10485 Woodstock Rd.  
 Roswell, GA 30075  
 Land Lot 370, 1<sup>st</sup> District  
 2<sup>nd</sup> Section  
 Fulton County, GA