

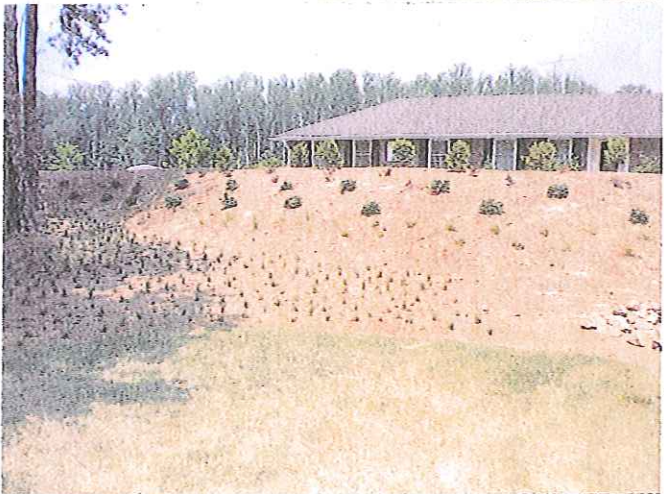
General note on all landscaping. We have decided to plant every bush over the next two weeks on the front berm that are on the plan. The dead trees are being removed and the missing or dead trees will be bonded. We have over 1200 bushes currently on the property. The plan called for a total of 1488 including annuals and groundcover including mondo grass, etc. We were also told not to plant in the tree save area. 88 of these "missing" plants are in the tree save area. We have replaced over 29 dead trees over the past several years and have added numerous bushes to our property.

	Issue	Staff Contact	Action needed	Revised Plans Needed (Yes/No)	Timeframe for Compliance
1	2 dead trees	Andy Pittner	Replace	No	
2	25 shrubs	Andy Pittner	Install	No	
3	10 shrubs	Andy Pittner	Install	No	
4	Planting bed	Andy Pittner	Install	No	
5	25 shrubs	Andy Pittner	Install	No	
6	5 trees	Andy Pittner	Install	No	
7	5 trees	Andy Pittner	Install	No	
8	5 trees	Andy Pittner	Install	No	
9	8 shrubs	Andy Pittner	Install	No	
10	Planting bed	Andy Pittner	Install	No	
11	15 trees	Andy Pittner	Install	No	
12	Planting bed	Andy Pittner	Install	No	
13	Shrubs	Andy Pittner	Install	No	
14	Shrub Hedge	Andy Pittner	Install	No	
15	2 dead trees	Andy Pittner	Replace	No	
16	Planting bed	Andy Pittner	Install	No	
17	3 dead trees	Andy Pittner	Replace	No	
18	9 trees missing	Andy Pittner	New Location	Yes	
19	5 trees missing	Andy Pittner	Install	No	
20	19 trees missing	Andy Pittner	New Location	Yes	

Tree Survey  
being done by  
Paulson Mitchell  
will be complete  
by June 15<sup>th</sup>  
with bond aman









## Fellowship Christian School 2007 Approval Items in Non-compliance

### Transportation

	Issue	Staff Contact	Action needed	Revised Plans Needed (Yes/No)	Timeframe for Compliance	Jeff Van Pelt Comments
#6	Second right turn decel Woodstock	Serge Osse	Future study	Pending		I recall discussions several years ago that discounted the need for this after the Jones Rd entrance was completed
#8	Decel lane Crossville	Steve Acenbrak	GDOT, RDOT	Pending		Off Site improvement that I thought had been put to rest.
#13	Internal Routing plan	Serge Osse	Provide Plan	Yes	Completed	One was submitted at the permit for the middle school building. We are currently developing a new one for the Jones Rd entrance opening
#26	Gate between School and Church	Serge Osse	Request removal	No		

### Grading & Drainage

	Issue	Staff Contact	Action needed	Revised Plans Needed (Yes/No)	Timeframe for Compliance
1	Future parking area	Tom Dunne	stabilized area	No	

after the 11/1 meeting, over 150 truckloads of dirt were removed and the area strawed, seeded fertilized and watered. We have since reseeded it with love grass.





2

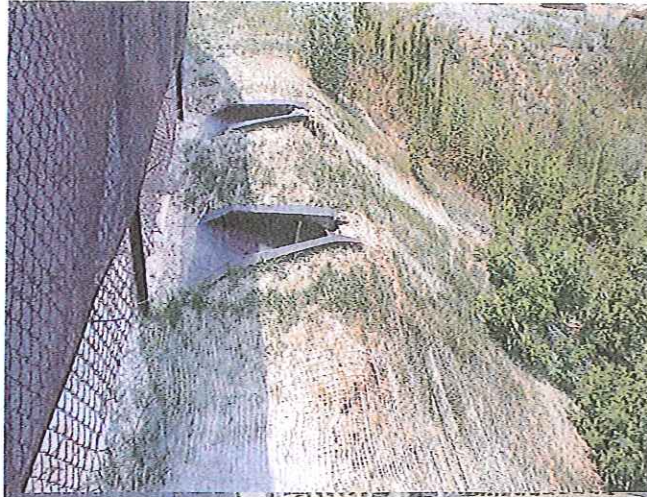
Gullies

Jean Rearick

stabilized area

Yes

Gullies are stabilized and seeded with love grass, we are monitoring growth and will reseed if necessary



3

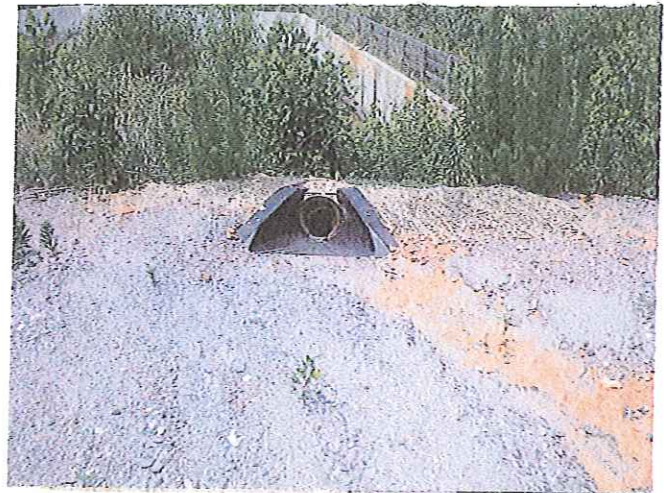
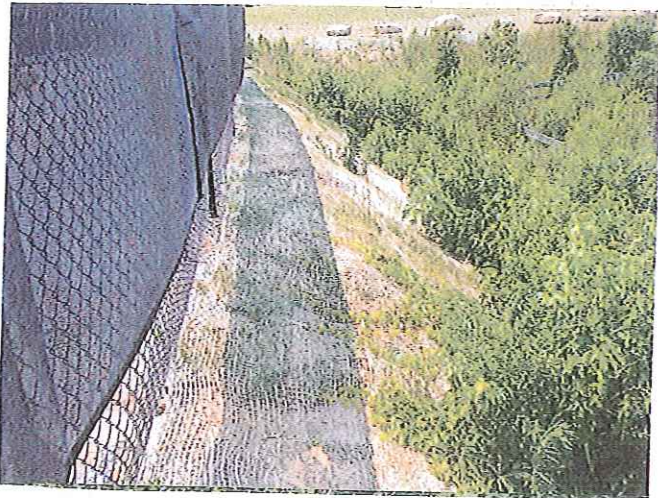
Down Drains, Grassing

Jean Rearick

stabilized area

Yes

Down drains are installed and work properly.





4	Maintained Path, Fencing of utility area, grassed	Jean Rearick	Fencing, Grass	Yes	All fencing on plans is installed, I don't know what this means
---	---	--------------	----------------	-----	--

No fencing around utility area easment to AT&T shown.

5	Clean inlets,	Tom Dunne	Clean	No
---	---------------	-----------	-------	----

This will be done by next Wednesday. I  
will have to walk the entire property to see  
which ones he is talking about

Inlets all clean see photos.

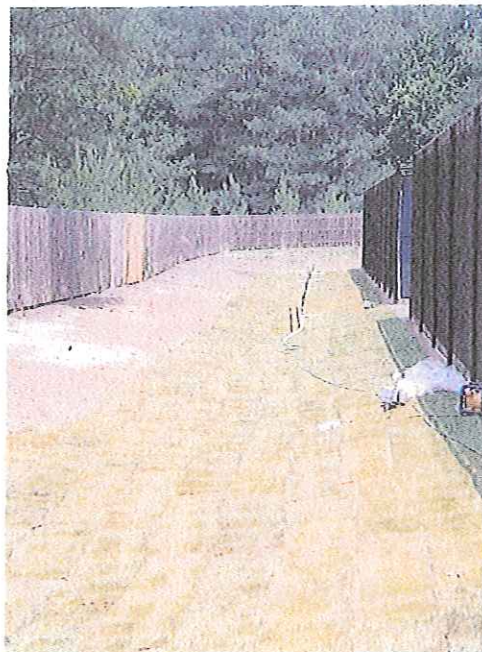
6	Matting, Outlet protection	Jean Rearick	Matting	Yes
---	-------------------------------	--------------	---------	-----

Where, why do we need a plan

matting done

7	Grass/sod	Tom Dunne	Grass	No
---	-----------	-----------	-------	----

I believe Tom is referring to the note on  
the phased erosion controll plan that calls  
for DE3 and DE4 on disturbed areas to be  
replaced with permanent grassing. The  
landscape plan shows landscaping and  
pine straw. It is common practice to  
establish perminant vegetation to areas  
that are disturbed as part of the phased  
erosion control plan and replace it with  
items on the landscape plan. I don't think  
we want to grass the entire site.



8

Remove concrete  
driveway

Tom Dunne

Dig up &amp; Sod

No



we will remove driveway. Shouldn't be on a list since it is part of the phased development plan. Concrete will be replaced with pine straw per landscape plan not DE3 per phased erosion control plan.



9

Mitigate leaking  
leachate

Tom Dunne

Dig up, Remove  
material & Sod

No



It has been determined that it is a underground spring. The area above is a rock formation. Any helpful advice would be appreciated. Not a water leak or a junk pile as suggested in numerous meetings.

10

Update plan for  
pathways

Jean Rearick

Submit revised  
plan

Yes

Complete

This is being done now by Wilson Long. Shouldn't be a requirement but we are doing it