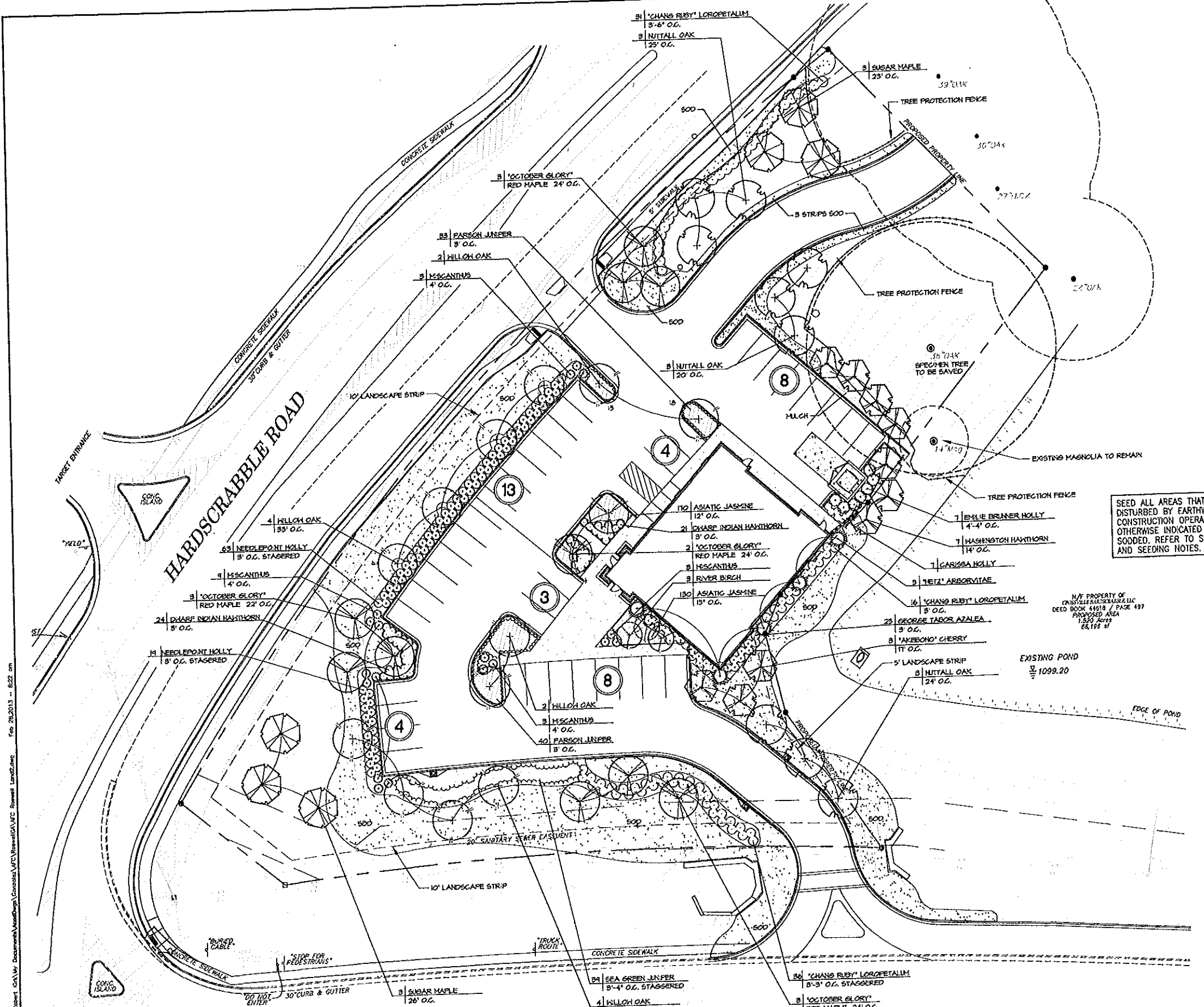
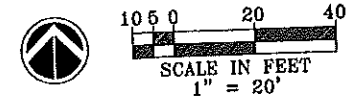


C:\Documents and Settings\Robert Kirk\My Documents\Landscapes\Georgia State Route 92\Woodstock Road.dwg



GEORGIA STATE ROUTE 92
(A.K.A. WOODSTOCK ROAD)

REFER TO SHEET L4 FOR PLANTING DETAILS, NOTES, AND PLANT MATERIALS LIST.



TREE DENSITY UNITS SAVED
1 - 56' OAK X 8.4 = 8.4 UNITS
NEW TREE DENSITY UNITS = 40.7
RECOMPENSED TREE DENSITY UNITS = 0.9
TREE DENSITY UNITS REQUIRED = 49
TREE DENSITY UNITS PROVIDED = 44.1

PROPERTY OWNER:
JOHN LUNDEEN III
CROSSVILLE LANDSCAPE LLC
515 NORTHSHORE PKWY
400 NORTH CREEK
SUITE 100
ATLANTA, GA 30321
404-846-4001

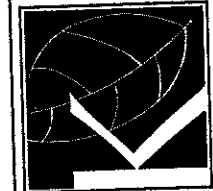
SEED ALL AREAS THAT HAVE BEEN DISTURBED BY EARTHWORK AND CONSTRUCTION OPERATIONS, UNLESS OTHERWISE INDICATED TO BE SOODED. REFER TO SPECIFICATIONS AND SEEDING NOTES.

N/4 PROPERTY OF
CROSSVILLE LANDSCAPE LLC
DEED BOOK 44518 / PAGE 437
PROPOSED AREA
1.520 Acres
24,195 SF

NO.	REVISIONS	DATE	Checked:
1	ISSUED PER CITY APPROVAL COMMENTS 10/19/12	10/19/12	
2	ISSUED PER CITY APPROVAL COMMENTS 10/19/12	10/19/12	
3	ISSUED PER CITY APPROVAL COMMENTS 10/19/12	10/19/12	

AMERICAN FAMILY CARE
HARDSCRABBLE ROAD
ROSWELL, GEORGIA
FOR
AMERICAN FAMILY CARE
HOOVER, ALABAMA

Robert P Kirk & Associates, P.C.
Landscape Architecture - Site Planning
& Golf Course Design
2155 Old Rocky Ridge Road
Birmingham, Alabama 35216
205/988-4720



SHEET
L2-R0
SEQUENCE
2 OF 4
PROJECT: 12-137

LANDSCAPE PLAN