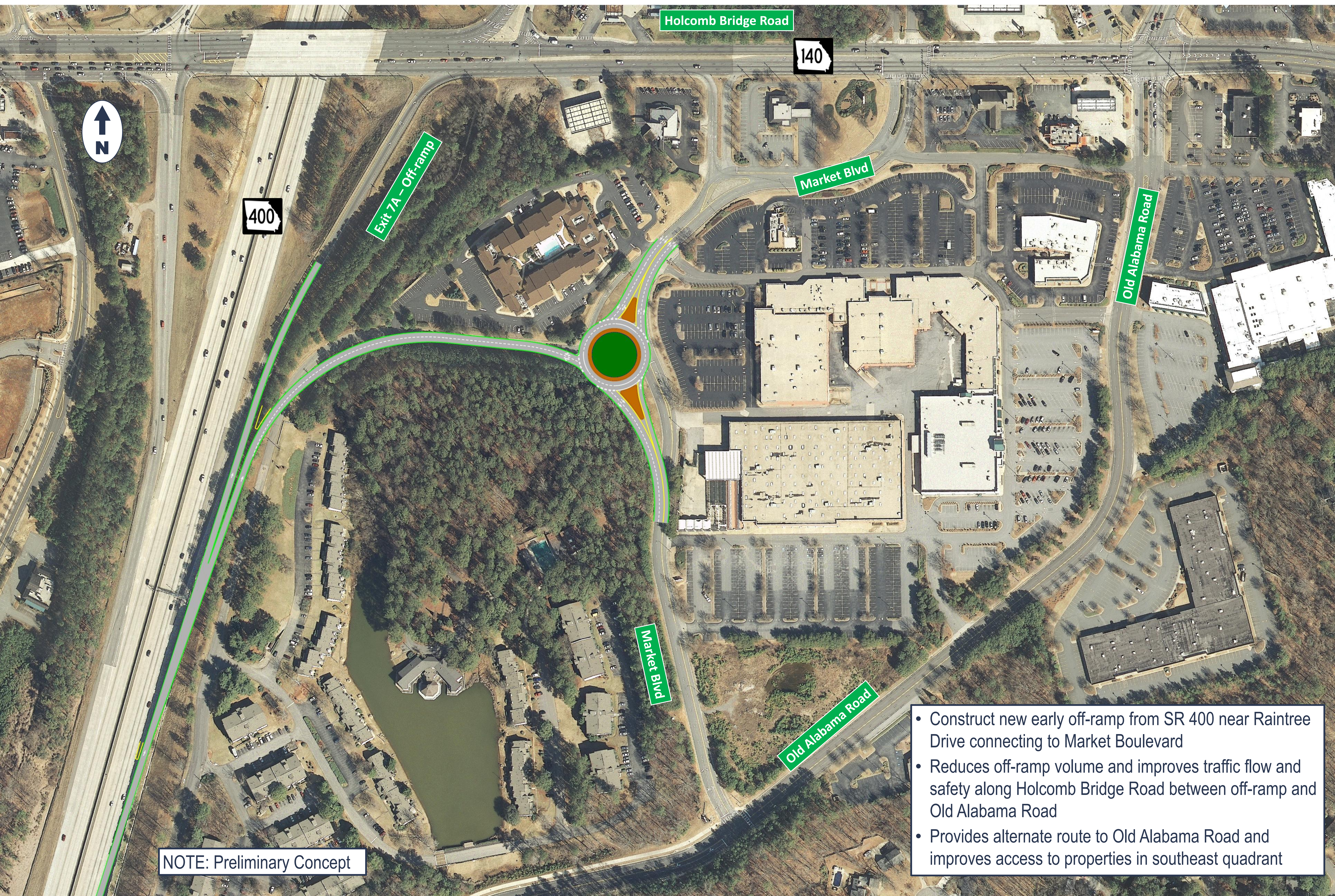


SR 400 Northbound Early Off-Ramp



NOTE: Preliminary Concept

- Construct new early off-ramp from SR 400 near Raintree Drive connecting to Market Boulevard
- Reduces off-ramp volume and improves traffic flow and safety along Holcomb Bridge Road between off-ramp and Old Alabama Road
- Provides alternate route to Old Alabama Road and improves access to properties in southeast quadrant