

CITY OF ROSWELL NOTES

MATERIALS PROHIBITED IN TREE SAVE AREAS: NO STRUCTURES IMPROVEMENTS OR ANY ACTIVITY INCLUDING SOLVENTS, MATERIAL CONSTRUCTION MACHINERY, PORTABLE TOILETS, CONSTRUCTION TRAILERS, OR TEMPORARY SOIL DEPOSITS SHALL ENCROACH OR BE PLACED WITHIN A DRIP LINE AND WITHIN SIX FEET OF THE AREA IMMEDIATELY OUTSIDE THE DRIP LINE, OF ANY SPECIMEN TREE OR ANY TREE WITHIN A TREE SAVE AREA UNLESS AUTHORIZED BY THE ARBORIST IN WRITING.

TREE PROTECTION DEVICES: BEFORE DEVELOPMENT, LAND CLEARING, FILLING, OR ANY LAND ALTERATION, THE DEVELOPER SHALL BE REQUIRED TO ERECT SUITABLE PROTECTIVE BARRIERS AS REQUIRED BY THE ARBORIST PURSUANT TO AN APPROVED TREE PROTECTION PLAN, INCLUDING TREE FENCES, TREE PROTECTION SIGNS, AND EROSION BARRIERS. INSPECTION OF TREE PROTECTION BARRIERS IS REQUIRED PRIOR TO THE COMMENCEMENT OF ANY LAND DISTURBANCE OR DEVELOPMENT. SAID TREE PROTECTION MEASURES SHALL REMAIN IN FUNCTIONING CONDITION UNTIL COMPLETION OF THE SITE LANDSCAPING, COMPLETION OF THE PROJECT, OR UNTIL THE CERTIFICATE OF OCCUPANCY IS ISSUED. AUTHORIZATION TO REMOVE THE PROTECTIVE DEVICES SHALL BE EVIDENCED IN WRITING BY THE ARBORIST OR BY THE ISSUANCE OF THE FINAL CERTIFICATE OF OCCUPANCY.

ACTIVE TREE PROTECTION DEVICES: MATERIALS FOR ACTIVE TREE PROTECTION SHALL CONSIST OF CHAIN LINK, ORANGE LAMINATED PLASTIC, WOODEN POST AND RAIL FENCING OR OTHER PROTECTION IS REQUIRED, EACH TREE TO BE SAVED SHALL BE MARKED AT THE BASE OF THE TRUNK WITH BLUE COLORED WATER-BASED PAINT.

PASSIVE TREE PROTECTION: MATERIALS FOR PASSIVE TREE PROTECTION SHALL CONSIST OF HEAVY MIL. PLASTIC FLAGGING, A MINIMUM OF FOUR (4) INCHES WIDE WITH DARK LETTERS READING "TREE PROTECTION AREA - DO NOT ENTER" OR EQUIVALENT SIGNAGE ON A CONTINUOUS, DURABLE RESTRAINT. NO PASSIVE TREE PROTECTION SPECIFIED FOR THIS SITE UNLESS PRIOR APPROVAL IS OBTAINED IN WRITING FROM THE CITY ARBORIST.

ADDITIONAL MEASURES: THE DEVELOPER SHALL TAKE MEASURES TO ENSURE THE HEALTH OF THE PROTECTED TREES DURING CONSTRUCTION, INCLUDING BUT NOT LIMITED TO THE FOLLOWING MEASURES"

1. WATER, FERTILIZE AND TREAT THE TREES FOR PESTS OR DISEASE AS NEEDED, IN ACCORDANCE WITH STANDARDS OF THE INTERNATIONAL SOCIETY OF ARBORICULTURE.
2. IF GRADING COVERS THE TREES WITH DUST, HOSE THEM OFF.
3. DO NOT RANDOMLY OR INCORRECTLY PRUNE LIVE BRANCHES SO THAT EQUIPMENT OR STRUCTURES CAN "FIT" WITHIN THE TREE'S PROTECTED ZONE.
4. DO NOT STRIP THE TOPSOIL OR REMOVE THE NATURAL LEAF MULCH OR MATERIAL FROM BENEATH A PROTECTED TREE.
5. TREES SHALL BE FELLED AWAY FROM, RATHER THAT INTO, TREE SAVE AREA.
6. PROVIDE ADEQUATE MULCHING AND WATER FOR TREES THAT WILL BE RETAINED.

TREE PROTECTION MEASURES SHALL REMAIN IN PLACE FOR A PERIOD OF TWO YEARS AFTER CONSTRUCTION WITH APPROVED REMOVAL BY ARBORIST ONLY.

TREES SHALL BE GUARANTEED FOR A PERIOD OF 2 YEARS. ANY REPLACEMENT OF TREES UNDER THIS GUARANTEE PERIOD SHALL EXTEND THE GUARANTEE PERIOD FOR 2 ADDITIONAL YEARS FOR THE REPLACEMENT TREES.

DETENTION NOTE: DETENTION CALCULATION OR REQUIREMENT FOR ADDITIONAL SPACE FOR DETENTION, (IF NECESSARY), WILL BE ACCOMMODATED WITH ANY LANDSCAPE REQUIREMENTS AND OR SCREENING.

EXISTING DENSITY FACTOR (EDF)

104" x 1.5u	= 1.5u
105" x 2.0u	= 2.0u
706/7" x 2.4u	= 16.8u
308/9" x 3.0u	= 9.0u
4010/11" x 3.6u	= 14.4u
1012/13" x 4.2u	= 4.2u
3014/15" x 4.8u	= 14.4u
2022/23" x 6.3u	= 12.6u
1028" x 7.2u	= 7.2u
4034/35" x 8.1	= 32.4u
1036" x 8.4	= 8.4u
122.9u	

SPECIMEN TREES

43" OAK IMPACTED/NOT CUT
44" OAK IMPACTED/NOT CUT

FOR CITY OF ROSWELL TREE ORDINANCE/BUFFER/LANDSCAPE STRIP CALCULATIONS SEE SHEET L-2

ENTIRE SITE DENSITY FACTOR (SDF) CALCULATIONS:

SDF REQUIREMENT = 30 UNITS/ACRE
SITE = 1.81ac
SDF = 1.81ac x 30u = 54.3u

EXISTING SITE DENSITY FACTOR (EDF):

EDF = 122.9u (SEE EDF CHART L-1)

ENTIRE SITE REPLACEMENT DENSITY FACTOR (RDF) CALCULATIONS:

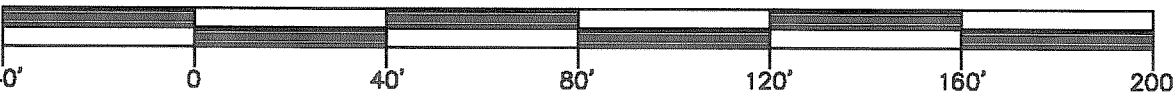
RDF = EDF - SDF
RDF = 122.9u - 54.3u = 68.6 excess density
SITE COMPLIES WITH EXISTING UNITS NO ADDITIONAL UNITS REQ.

ENTIRE SITE SPECIMEN TREES:

43" OAK/9.6u & 44" OAK/9.6u
COMPENSATE WITH EXCESS DENSITY
TREES NOT CUT AND DRIVE OF PEA GRAVED AROUND ROOT ZONE. OWNER AGREES TO COMPENSATE FOR THESE TWO TREES IF THEY DIE WITHIN 2 YEARS WITH NEW 4" TREES OR
\$500.00 PER TREE UNIT LOST AS PER CITY OF ROSWELL TREE ORDINANCE PROVISIONS



GRAPHIC SCALE



PROJECT NUMBER
FA 11-042

SHEET
1
OF
2

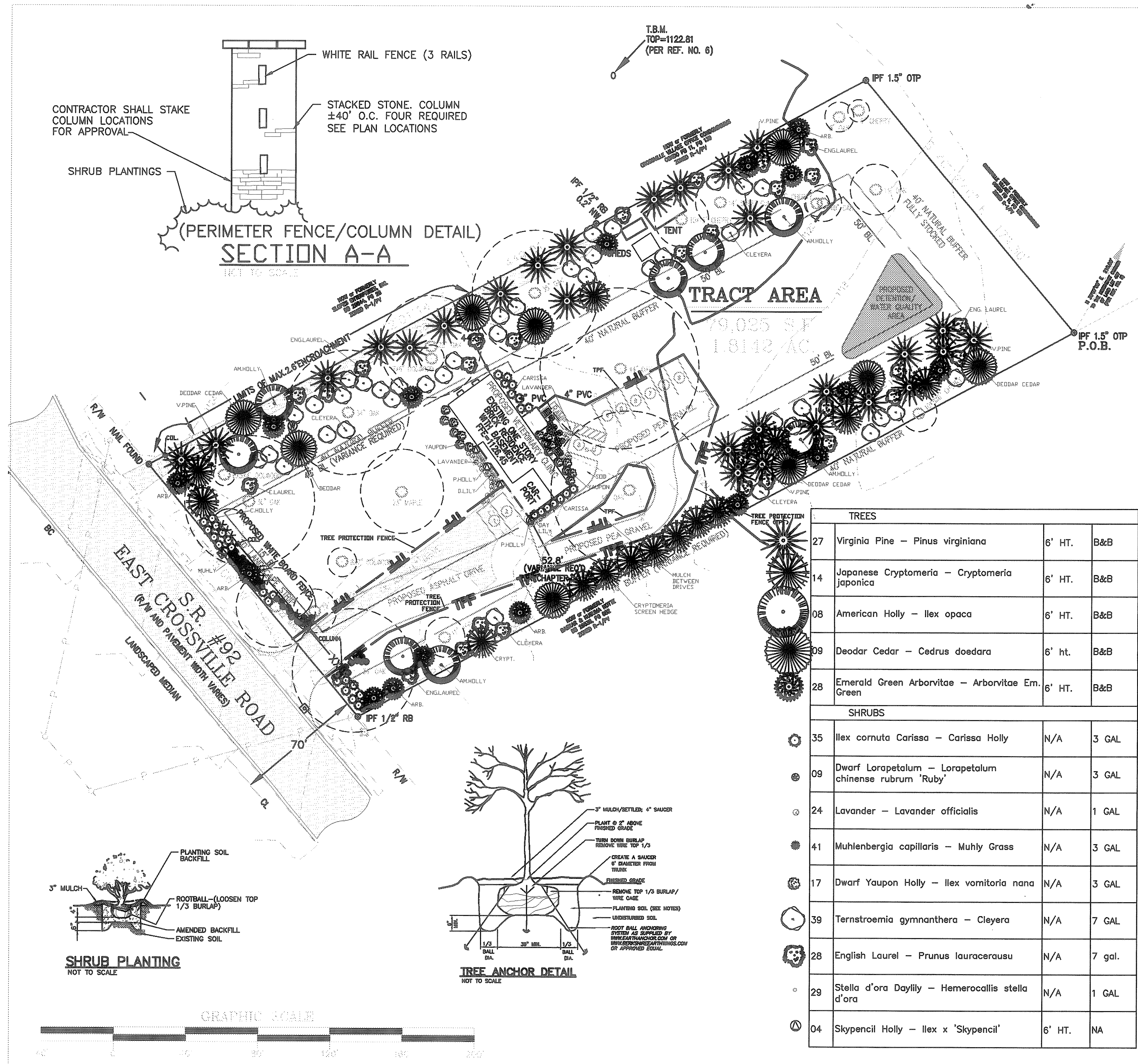
DRAWN: PF	NO.	DESCRIPTION	DATE	BY	APPR.
DATE: 12/05/11	1	DRB SUBMITTAL	12/05/11	PF	
SCALE: HORIZ. 1" = 40'					
VERT. 1" = 40'					
LAND LOT(S):					
DISTRICT:					
SECTION:					
CITY OF: ROSWELL					
COUNTY: FULTON					



EXISTING TREE SURVEY

40 EAST CROSSVILLE ROAD
ROSWELL, GEORGIA.

FRAWLEY ASSOCIATES LLC
LANDSCAPE ARCHITECTS
675 SEMINOLE AVE., STE. 101
ATLANTA, GEORGIA 30307 404-874-5091
pjfrawley@aol.com www.frawleyassociates.com



PARKING LOT TREES CALCULATIONS:
FOR PARKING LOTS FOR 20 OR MORE SPACES. (30 SPACES TOTAL)
PARKING LOT LESS THAN 20 SPACES; (no requirements)

LANDSCAPE STRIPS

FRONTAGE 10' STRIP
1 TREE AND 10 SHRUBS / 35'
120'/35 = 4TR (2 EXIST. & 2 NEW) &
40 SHRUBS (COMPLIES)

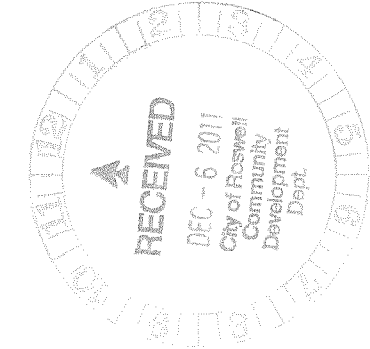
40' NORTH EAST BUFFER
FULLY STOCKED
NO PLANTING ADDED

40' NORTHWEST BUFFER
INFILLED AS SHOWN
FOR FULL SCREEN COVERAGE

40' SOUTHEAST BUFFER
INFILLED AS SHOWN
FOR FULL SCREEN COVERAGE

10' SOUTHEAST BUFFER
INFILLED AS SHOWN
FOR FULL SCREEN COVERAGE

LANDSCAPE AREA
LOT SIZE 79,024sf
IMPERVIOUS 12,000sf OR 15%
LANDSCAPED 85%



PERMITS: THE CONTRACTOR SHALL OBTAIN AND PAY FOR ALL PERMITS AND FEES ASSOCIATED WITH THE LANDSCAPE/IRRIGATION INSTALLATION. DO NOT CARRY OUT THE INSTALLATION ON UN-PERMITTED/APPROVED PLANS. THE INSTALLATION SHALL COMPLY WITH ALL LANDSCAPE CONDITIONS ATTACHED TO THE SITE.

FRAWLEY ASSOCIATES LLC (FA) SHALL NOT BE RESPONSIBLE FOR CONSTRUCTION, MEANS, METHODS, TECHNIQUES, OR PROCEDURES UTILIZED BY ANY CONTRACTOR.

UTILITY LOCATION: IT IS THE CONTRACTOR'S RESPONSIBILITY TO HAVE ALL UTILITIES LOCATED PRIOR TO ANY DIGGING. PRIOR TO CONSTRUCTION, THE CONTRACTOR IS RESPONSIBLE FOR CONTACTING THE UTILITIES PROTECTION CENTER IN GEORGIA @ 811, 72 HOURS BEFORE DIGGING, (EXCLUDING HOLIDAYS AND WEEKENDS) AS SPECIFIED IN THE 'CALL-BEFORE-YOU-DIG' LAW.

SIGHT DISTANCES: PROPER SITE DISTANCED SHALL BE MAINTAINED AT ALL DRIVE OPENINGS. THE CONTRACTOR SHALL NOTIFY THE LANDSCAPE ARCHITECT OF ANY LANDSCAPE OBSTRUCTIONS TO PROPER SITE DISTANCES OF ANY PROPOSED PLANT MATERIAL PRIOR TO INSTALLATION.

CLEANING: THE CONTRACTOR SHALL BE RESPONSIBLE TO CLEAN AND REMOVE/DISPOSE, IN A LEGAL MANNER, FROM THE SITE ALL DEBRIS THAT IS A PART OF THE CONTRACTOR'S OPERATION.

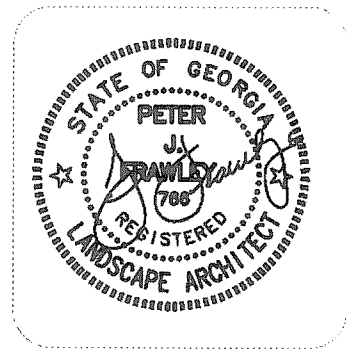
PLANT QUALITY/CRITERIA: ALL TREES SHALL BE OF GOOD QUALITY, FREE OF DISEASE, STRAIGHT TRUNKED, FULL HEADED, SYMMETRICAL AND WELL ROOTED. ALL TREES/SHRUBS MUST BE CONTAINER GROWN OR BALLED AND BURLAPPED WITH SIZES AS INDICATED ON THE PLANT LIST OR ON THE DRAWINGS. ALL PLANTS SHALL BE HEALTHY, VIGOROUS MATERIAL, FREE OF PESTS AND DISEASES. ALL ROOTBALLS, CONTAINERS & HEIGHT TO WIDTH RATIOS SHALL CONFORM TO THE SIZE STANDARDS SET FORTH IN 'AMERICAN STANDARDS FOR NURSERY STOCK' AS PUBLISHED BY THE AMERICAN ASSOCIATION OF NURSERYMEN. THE CONTRACTOR SHALL ARRANGE AND COORDINATE PLANT APPROVAL 'PRIOR TO INSTALLATION'. THE OWNER/OWNER'S REPRESENTATIVE MAY AT ANY POINT BEFORE, DURING OR AFTER THE INSTALLATION BUT PRIOR TO FINAL ACCEPTANCE REJECT PLANT MATERIAL OR INSTALLATION WHICH DOES NOT COMPLY WITH THE SPECIFICATIONS OF THIS DRAWING. ALL PLANT MATERIAL SHALL BE NUMBER ONE OR BETTER. ALL PLANTINGS SHALL BE MULCHED WITH 4" SETTLED CURRENT CROP PINE STRAW.

PLANT GUARANTEE: ALL PLANT MATERIAL SHALL BE GUARANTEED FOR A PERIOD OF TWO YEAR(S) BEGINNING AT FINAL ACCEPTANCE. THE CONTRACTOR SHALL REPLACE ANY PLANT MATERIAL WHICH DIES OR IS IN A DETERIORATING CONDITION DURING THE GUARANTEE PERIOD AND HAS BEEN PROPERLY MAINTAINED, (WHICH INCLUDES PROPER WATERING).

IRRIGATION: THE CONTRACTOR SHALL SUBMIT TO THE OWNER A PRICE TO DESIGN AND INSTALL A FULLY AUTOMATIC IRRIGATION SYSTEM FOR THIS LANDSCAPE INSTALLATION. THE LANDSCAPE CONTRACTOR SHALL PAY FOR ALL PERMITS AND FEES. THE LANDSCAPE CONTRACTOR SHALL COMPLY WITH ALL LOCAL CODES AND ORDINANCES. THE LANDSCAPE CONTRACTOR SHALL PROVIDE A CERTIFICATE OF WARRANTY, REGISTRATION AND WRITTEN GUARANTEE FOR A PERIOD OF TWO YEARS FROM THE DATE OF FINAL ACCEPTANCE. IF AN AUTOMATIC IRRIGATION SYSTEM IS NOT INCLUDED, THE CONTRACTOR IS TO SUPPLY GATOR BAGS AND A WATERING SCHEDULE FOR ALL NEW TREES.

LIGHTING TO BE PROVIDED BY BUILDING WALL DOWN LIGHTS TO ROSWELL REQUIREMENTS. LIGHTS SHALL BE FITTED WITH SHIELDS LIMITING LIGHT TO THIS SITE ONLY; NO GARE TO SURROUNDING PROPERTIES.

TREES			
27	Virginia Pine - Pinus virginiana	6' HT.	B&B
14	Japanese Cryptomeria - Cryptomeria japonica	6' HT.	B&B
08	American Holly - Ilex opaca	6' HT.	B&B
09	Deodar Cedar - Cedrus doedara	6' ht.	B&B
28	Emerald Green Arborvitae - Arborvitae Em. Green	6' HT.	B&B
SHRUBS			
35	Ilex cornuta Carissa - Carissa Holly	N/A	3 GAL
09	Dwarf Lorapetalum - Lorapetalum chinense rubrum 'Ruby'	N/A	3 GAL
24	Lavander - Lavander officialis	N/A	1 GAL
41	Muhlenbergia capillaris - Muhly Grass	N/A	3 GAL
17	Dwarf Yaupon Holly - Ilex vomitoria nana	N/A	3 GAL
39	Ternstroemia gymnanthera - Cleyera	N/A	7 GAL
28	English Laurel - Prunus lauracerausu	N/A	7 gal.
29	Stella d'ora Daylily - Hemerocallis stella d'ora	N/A	1 GAL
04	Skypencil Holly - Ilex x 'Skypencil'	6' HT.	NA



EXISTING TREE SURVEY

40 EAST CROSSVILLE ROAD
ROSWELL, GEORGIA.

FRAWLEY ASSOCIATES LLC
LANDSCAPE ARCHITECTS
675 SEMINOLE AVE., STE. 101
ATLANTA, GEORGIA 30307 404-874-5091
pjfrawley@aol.com www.frawleyassociates.com

PROJECT NUMBER
FA 11-042

SHEET
2
OF
2

DRAWN:	NO.	DESCRIPTION	DATE	BY	APPR.
DATE:	1	DRB SUBMITTAL	12/05/11	PF	
SCALE: HORIZ. 1" =					
VERT. 1" =					
LAND LOT(S):					
DISTRICT:					
SECTION:					
CITY OF:					
COUNTY:					