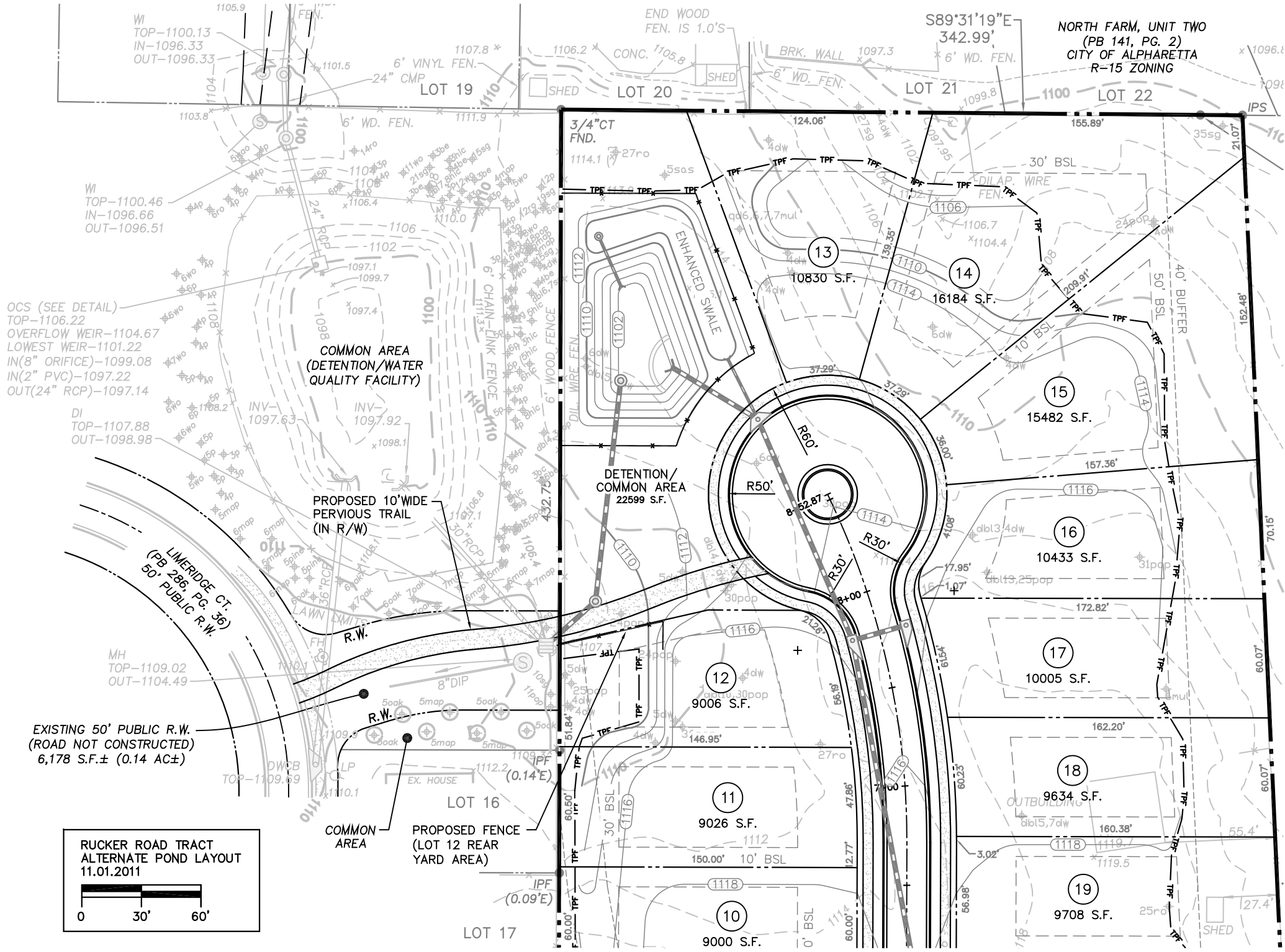


NORTH FARM, UNIT TWO
(PB 141, PG. 2)
CITY OF ALPHARETTA
R-15 ZONING



OCS (SEE DETAIL)
TOP-1106.22
OVERFLOW WEIR-1104.67
LOWEST WEIR-1101.22
IN(8" ORIFICE)-1099.08
IN(2" PVC)-1097.22
OUT(24" RCP)-1097.14

DI
TOP-1107.88
OUT-1098.98

LIMERIDGE CT.
(PB 286, PG. 36)
50' PUBLIC R.W.

MH
TOP-1109.02
OUT-1104.49

EXISTING 50' PUBLIC R.W.
(ROAD NOT CONSTRUCTED)
6,178 S.F.± (0.14 AC±)

**RUCKER ROAD TRACT
ALTERNATE POND LAYOUT
11.01.2011**

0 30' 60'