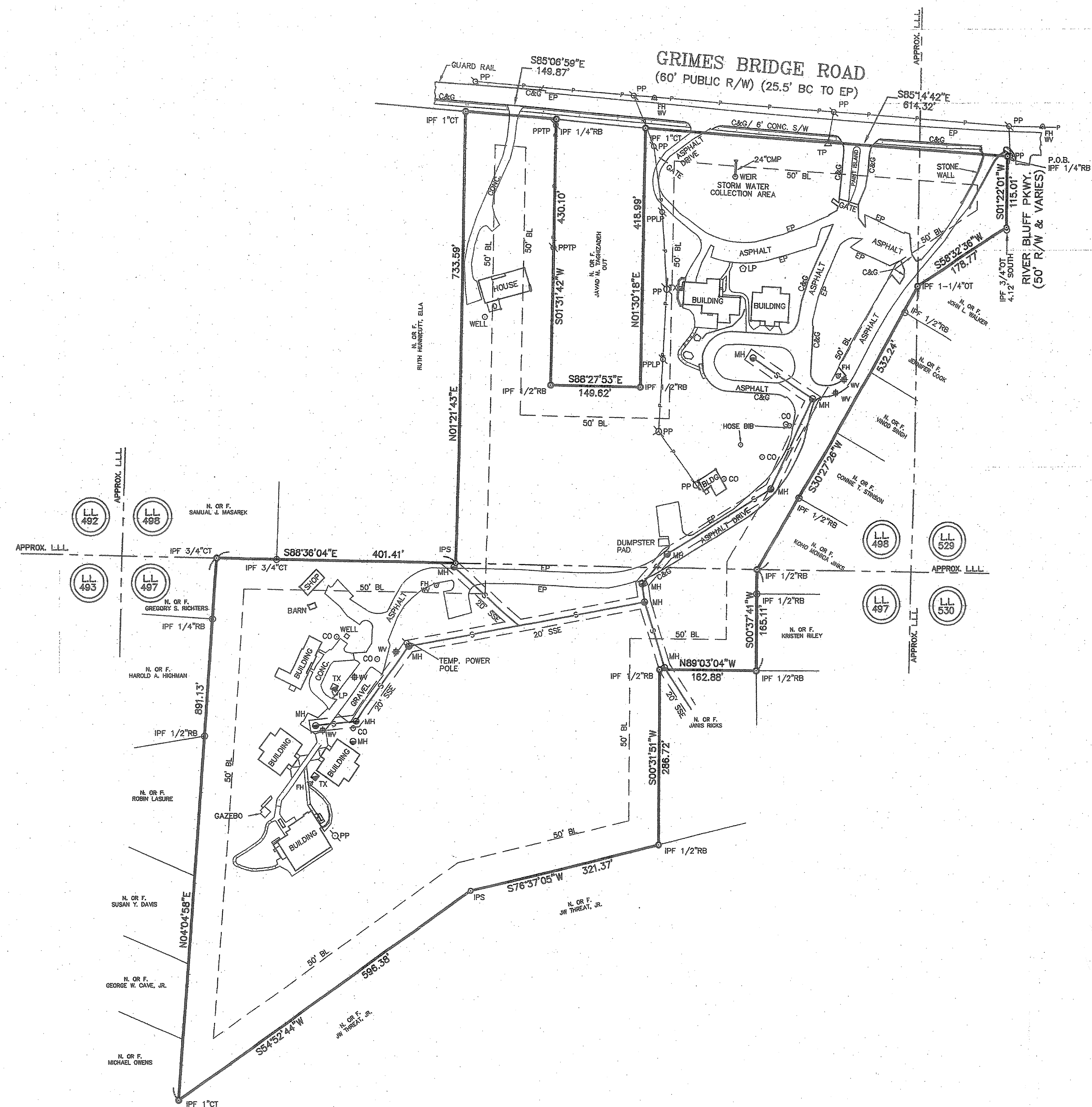
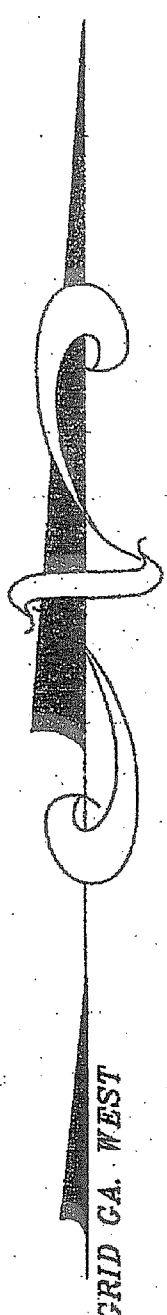


LEGEND:

- BC = BACK OF CURB
- BL = BUILDING SETBACK LINE
- BWL = BROKEN WHITE LINE
- C&G = CURB AND GUTTER
- CB = CATCH BASIN
- CI = CURB INLET
- CL = CENTERLINE
- CMF = CONCRETE MONUMENT FOUND
- CMP = CORRUGATED METAL PIPE
- CO = CLEAN OUT
- CP = CAMERA POLE
- CT = CRIMP TOP PIN
- DE = DRAINAGE ESMT.
- DI = DROP INLET
- DWCB = DBL. WING CATCH BASIN
- DYL = DBL. YELLOW LINE
- EP = EDGE OF PAVEMENT
- FC = FACE OF CURB
- FES = FLARED END SECTION
- FH = FIRE HYDRANT
- FDC = FIRE DEPT. CONNECTION
- FDV = FIRE DEPT. VALVE
- GI = GRATE INLET
- GW = GUY WIRE
- GP = GUY POLE
- HV = HEAD WALL
- IPF = IRON PIN FOUND
- IPS = IRON PIN SET
- JB = JUNCTION BOX
- INV = INVERT
- LLL = LAND LOT LINE
- LP = LIGHT POLE
- LS = LANDSCAPE STRIP
- MH = MANHOLE (SANITARY SEWER)
- OT = OPEN TOP PIPE
- PL = PROPERTY LINE
- PP = POWER POLE
- RB = REINFORCING BAR
- RCP = REINFORCED CONCRETE PIPE
- R/W = RIGHT-OF-WAY
- SSE = SANITARY SEWER ESMT.
- S/W = SIDEWALK
- SWCB = SGL. WING CATCH BASIN
- SWL = SGL. WHITE LINE
- TBM = TEMPORARY BENCHMARK
- TP = TELEPHONE POLE
- TSP = TRAFFIC SIGNAL POLE
- TX = POWER TRANSFORMER BOX
- UGP = UNDERGROUND POWER
- YI = YARD INLET

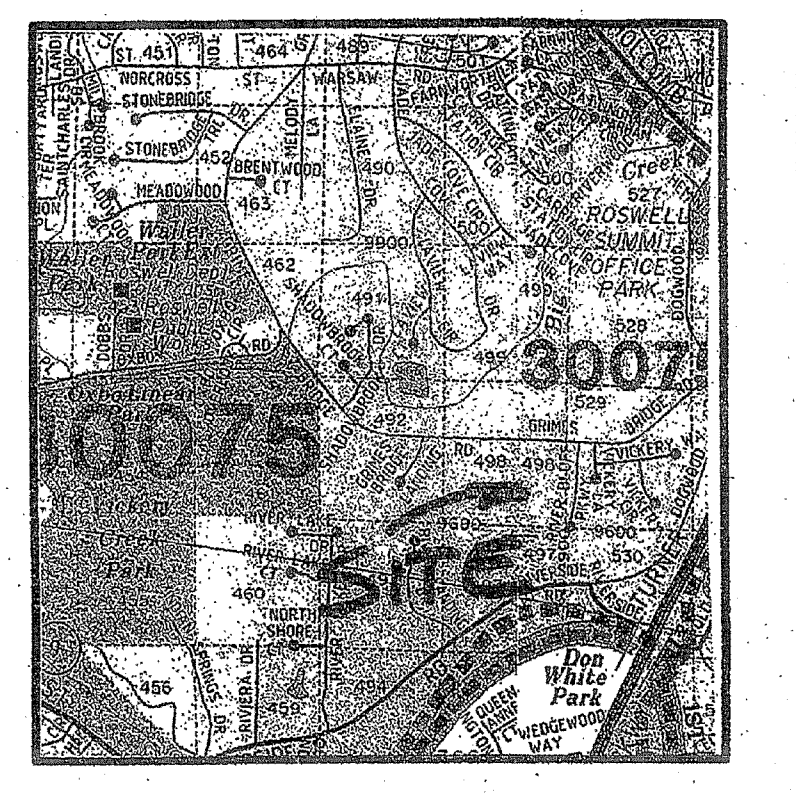
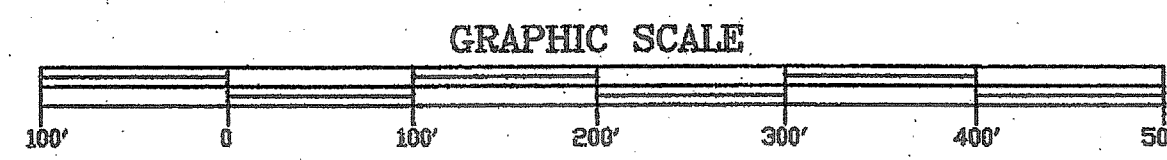


GENERAL NOTES:

THIS PROPERTY IS KNOWN AS # 700 GRIMES BRIDGE ROAD.

BUILDING SETBACKS SHOWN HEREON ARE FROM A PLAT OF THE COTTAGE SCHOOL RECORDED IN PLAT BOOK 223, PG. 24.

SEWER EASEMENTS SHOWN HEREON ARE FROM A PLAT OF THE COTTAGE SCHOOL RECORDED IN PLAT BOOK 223, PG. 24.



LOCATION MAP:

REFERENCE MATERIAL:

UNTITLED SURVEY PROVIDED BY CLIENT.

FINAL PLAT OF GRIMES BLUFF UNIT-1, PREPARED BY CIVIL DESIGN, INC., DATED 08-11-93, AND RECORDED IN PLAT BOOK 178, PG. 63.

PLAT OF BROWNING SUBDIVISION RIVERSIDE ROAD, PREPARED BY KELLY PROFESSIONAL SERVICES, INC., DATED 12-04-00, REV. 9-12-01 AND RECORDED IN PLAT BOOK 223, PG. 26.

PLAT OF THE COTTAGE SCHOOL GRIMES BR. ROAD, PREPARED BY KELLY PROFESSIONAL SERVICES, INC., DATED 12-04-00, REV. 9-12-01 & RECORDED IN PLAT BOOK 223, PG. 24 & 25.

BOUNDARY SURVEY FOR: JOE A. BROWNING LOT 7 GRIMES BLUFF UNIT 1 AND ADDITIONAL 1.0663 AC IN LAND LOT 497, PREPARED BY DAVID A. BURRE ENG. & SURVEYORS, INC., DATED 11-16-00.

BOUNDARY SURVEY WITH AS-BUILT IMPROVEMENTS FOR: JOHN WALKER, LOT 1 GRIMES BLUFF UNIT 1, PREPARED BY DAVID A. BURRE ENG. & SURVEYORS, INC., DATED 12-11-01.

AREA THIS TRACT:

943,957.15 SQ FT
21.6703 ACRES

FLOOD HAZARD NOTE:

THIS PROPERTY IS NOT CONTAINED WITHIN THE LIMITS OF A FLOOD HAZARD ZONE AS DEFINED BY THE FEDERAL EMERGENCY MANAGEMENT AGENCY FLOOD INSURANCE RATE MAP OF THE CITY OF ROSWELL, FULTON COUNTY, GA. (COMMUNITY MAP NO. 13121C0064 E.) MOST RECENTLY REVISED JUNE 22, 1998.

SURVEYOR'S NOTES:

MATTERS OF RECORD NOT SHOWN HEREON ARE EXCEPTED.

CERTAIN INTERIOR IMPROVEMENTS NOT SHOWN HEREON.

CERTAIN UNDERGROUND UTILITIES THIS TRACT (i.e. WATER, NATURAL GAS, ELECTRICITY, TELEPHONE, ETC.) AND/OR THEIR APPURTENANCES ARE NOT SHOWN HEREON.

THIS SURVEY WAS PREPARED WITHOUT THE BENEFIT OF A COMPLETE AND CERTIFIED TITLE COMMITMENT.



PRECISION OF SURVEY:

THE FIELD DATA UPON WHICH THIS PLAT IS BASED HAS A FIELD CLOSURE OF ONE FOOT IN 39,373 FEET AND AN ANGULAR ERROR OF 0.31 SECONDS PER ANGLE POINT AND WAS ADJUSTED USING GRANDALL'S RULE.

THIS PLAT HAS BEEN CALCULATED FOR CLOSURE AND IS FOUND TO BE ACCURATE WITHIN ONE FOOT IN 729,130 FEET.

FIELD ANGLES AND LINEAR DISTANCES MEASURED USING A TOPCON GTS-303 TOTAL STATION.

DAVID A. BURRE
ENGINEERS & SURVEYORS, INC.
11660 ALPHARETTA HWY. SUITE 100
ROSWELL, GEORGIA 30076 (770)448-0600

BOUNDARY SURVEY FOR:
THE COTTAGE SCHOOL



NO.	DATE	DESCRIPTION	BY	APPROV.
1				
2				
3				
4				
5				
6				
7				
8				
9				
10				
11				
12				
13				
14				
15				
16				
17				
18				
19				
20				

DRAWN: BDC
DATE: 12-20-2005
SCALE: HORIZ. 1" = 100'
LAND LOT(S): 1, 2, 3, 4
DISTRICT: 167, 168 & 169
SECTION: 20A
CITY: ROSWELL
COUNTY: FULTON, GA., GEORGIA

SHEET 1 OF 1
PROJECT NUMBER
06-3147

S10