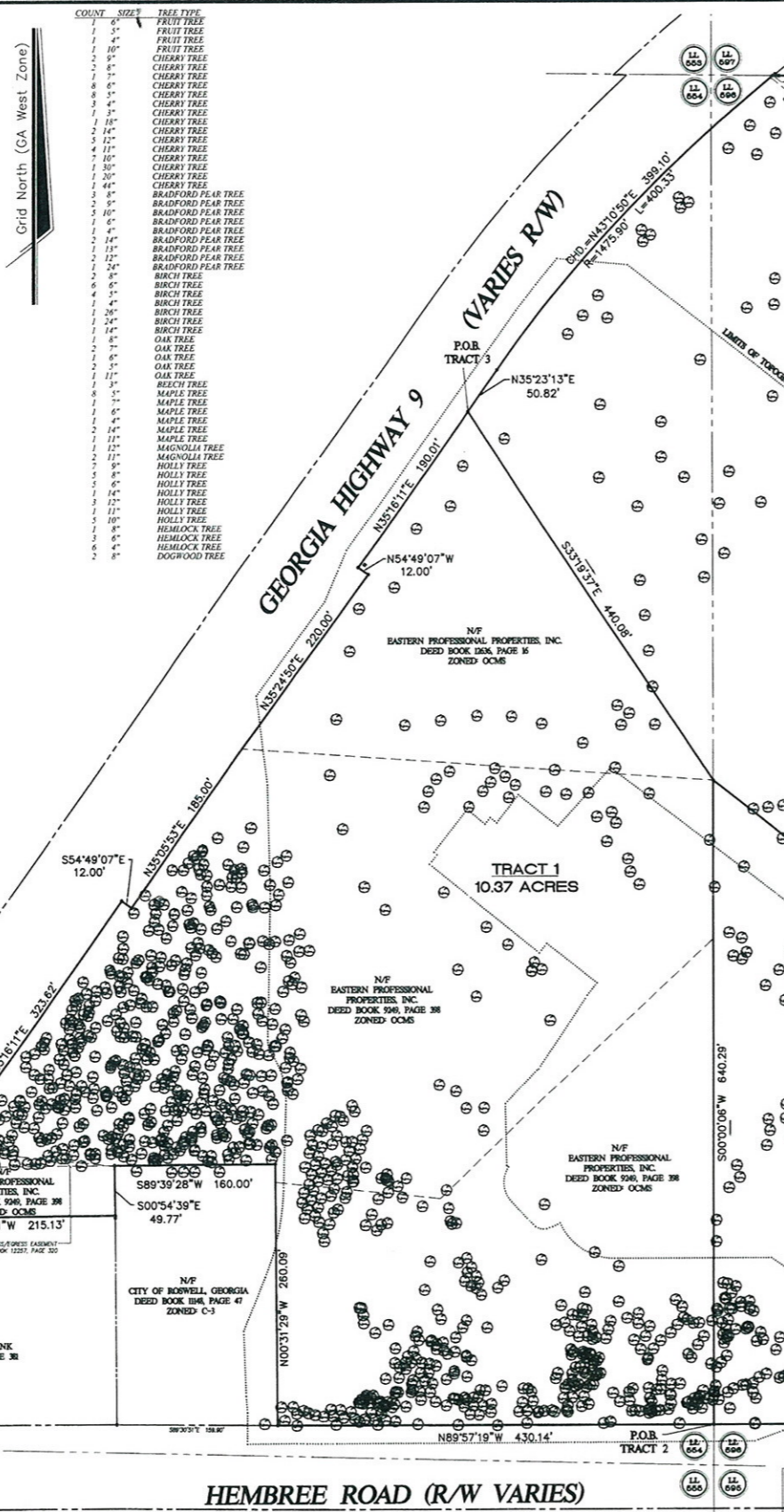




COUNT	SIZE	TREE TYPE
3	6"	SWEET GUM TREE
1	4"	SWEET GUM TREE
4	12"	SWEET GUM TREE
1	11"	SWEET GUM TREE
1	18"	POPLAR TREE
1	7"	POPLAR TREE
1	6"	POPLAR TREE
2	5"	POPLAR TREE
170	8"	PINE TREE
186	8"	PINE TREE
383	6"	PINE TREE
364	5"	PINE TREE
492	4"	PINE TREE
1	28"	PINE TREE
1	24"	PINE TREE
1	23"	PINE TREE
3	22"	PINE TREE
4	21"	PINE TREE
13	20"	PINE TREE
19	18"	PINE TREE
3	17"	PINE TREE
58	15"	PINE TREE
35	15"	PINE TREE
14	14"	PINE TREE
8	13"	PINE TREE
45	12"	PINE TREE
58	11"	PINE TREE
111	10"	PINE TREE
21	9"	PINE TREE
43	8"	OAK TREE
35	7"	OAK TREE
34	5"	OAK TREE
2	6"	DOGWOOD TREE
3	4"	DOGWOOD TREE
3	3"	DOGWOOD TREE
1	6"	DECIDUOUS TREE
7	9"	DECIDUOUS TREE
26	8"	DECIDUOUS TREE
19	7"	DECIDUOUS TREE
48	6"	DECIDUOUS TREE
23	5"	DECIDUOUS TREE
14	4"	DECIDUOUS TREE
1	36"	BIRCH TREE
2	23"	DECIDUOUS TREE
1	22"	DECIDUOUS TREE
21	21"	DECIDUOUS TREE
1	18"	DECIDUOUS TREE
8	18"	DECIDUOUS TREE
3	17"	DECIDUOUS TREE
13	16"	DECIDUOUS TREE
16	15"	DECIDUOUS TREE
4	14"	DECIDUOUS TREE
13	13"	DECIDUOUS TREE
14	12"	DECIDUOUS TREE
11	11"	DECIDUOUS TREE
23	10"	DECIDUOUS TREE
7	8"	CRAPE-MYRTLE TREE
1	15"	CRAPE-MYRTLE TREE
1	18"	CRAPE-MYRTLE TREE
11	12"	CRAPE-MYRTLE TREE
4	10"	CRAPE-MYRTLE TREE
31	4"	OAK TREE
1	3"	OAK TREE
1	20"	OAK TREE
6	18"	OAK TREE
1	17"	OAK TREE
4	16"	OAK TREE
6	15"	OAK TREE
19	14"	OAK TREE
16	12"	OAK TREE
13	11"	OAK TREE
22	10"	OAK TREE



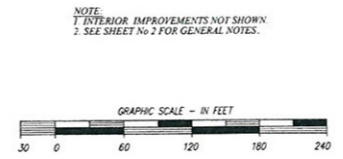
NO.	DATE	DESCRIPTION	BY

Current Zoning Variances:

1. Minimum side setback (interior lot line) is 10 feet.
2. Minimum landscape strip along side property line is 5 feet.
3. Minimum distance between buildings is 40 feet.
4. Minimum percent of landscaped open space is 35.
5. Maximum percent of lot coverage is 25.

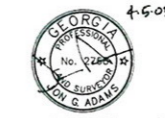
Concurrent Zoning Variances:

1. All Tract 1 interior side building setbacks are 0 feet.
2. All Tract 1 interior side landscape strips are 0 feet.
3. Tract 1 minimum required distance between buildings is 25 feet.
4. All Tract 2 interior side building setbacks are 0 feet.
5. All Tract 2 interior side landscape strips are 0 feet.
6. Tract 2 rear setback along property line is 0 feet.
7. Tract 2 minimum required distance between buildings is 25 feet.
8. All Tract 3 interior side building setbacks are 0 feet.
9. All Tract 3 interior side landscape strips are 0 feet.
10. Tract 3 rear setback along property line is 0 feet.
11. Tract 3 minimum required open space is 24%.
12. Tract 3 allowable building coverage is 25%.



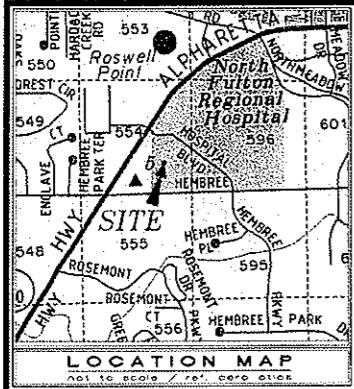
NORTH FULTON REGIONAL HOSPITAL

CITY OF ROSWELL
LAND LOTS 554 & 596
1st DISTRICT - 2nd SECTION
FULTON COUNTY, GEORGIA
APRIL 5, 2005/SCALE: 1"=60'



4317 Park Drive - Suite 400
Norcross, Georgia 30093
Phone: (770)416-7511
Fax: (770)416-6759
www.travispruit.com





LEGEND

- POWER POLE
- POWER POLE W/ GUY WIRE
- POWER POLE W/ LIGHT
- LIGHT STANDARD
- LANDSCAPE LIGHT
- LAMP POST
- ELECTRIC METER
- FIRE HYDRANT
- FIRE DEPARTMENT CONNECTION
- WATER METER
- WATER VALVE
- TELEPHONE BOX
- GAS METER
- GAS VALVE
- SANITARY SEWER MANHOLE
- CLEAN OUT
- JUNCTION BOX/STORM SEWER MANHOLE
- HEADWALL
- CATCH BASIN
- DROP INLET
- STORM SEWER LINE
- FLARED END SECTION
- FLAG POLE
- REGULAR PARKING SPACE QUANTITY
- LAND LOT IDENTIFICATION
- PROPERTY CORNER
- FIELD LOCATED PIN (AS NOTED)
- CONCRETE MONUMENT FOUND
- BENCH-MARK/TEMPORARY BENCHMARK (TBM)
- HANDICAP SYMBOL
- TREE
- SIGN
- OVERHEAD POWER LINE
- OVERHEAD TELEPHONE LINE
- OVERHEAD CABLE TELEVISION LINE
- APPROXIMATE LOCATION UNDERGROUND CABLE TELEVISION LINE
- APPROXIMATE LOCATION UNDERGROUND POWER LINE
- APPROXIMATE LOCATION UNDERGROUND TELEPHONE LINE
- APPROXIMATE LOCATION GAS LINE
- APPROXIMATE LOCATION WATER LINE
- SANITARY SEWER LINE
- TOP OF CURB
- BOTTOM OF CURB
- TR
- BT
- RCP
- CMP
- DIP
- CIP
- CPP
- PVC
- IPS
- RAH
- RDH
- P.O.B.
- N/F
- R/W
- FFE
- INV.
- TH
- CONC.
- FENCE LINE
- BOLLARD
- CONTOUR ELEVATION
- SPOT ELEVATION

STORM SEWER DATA

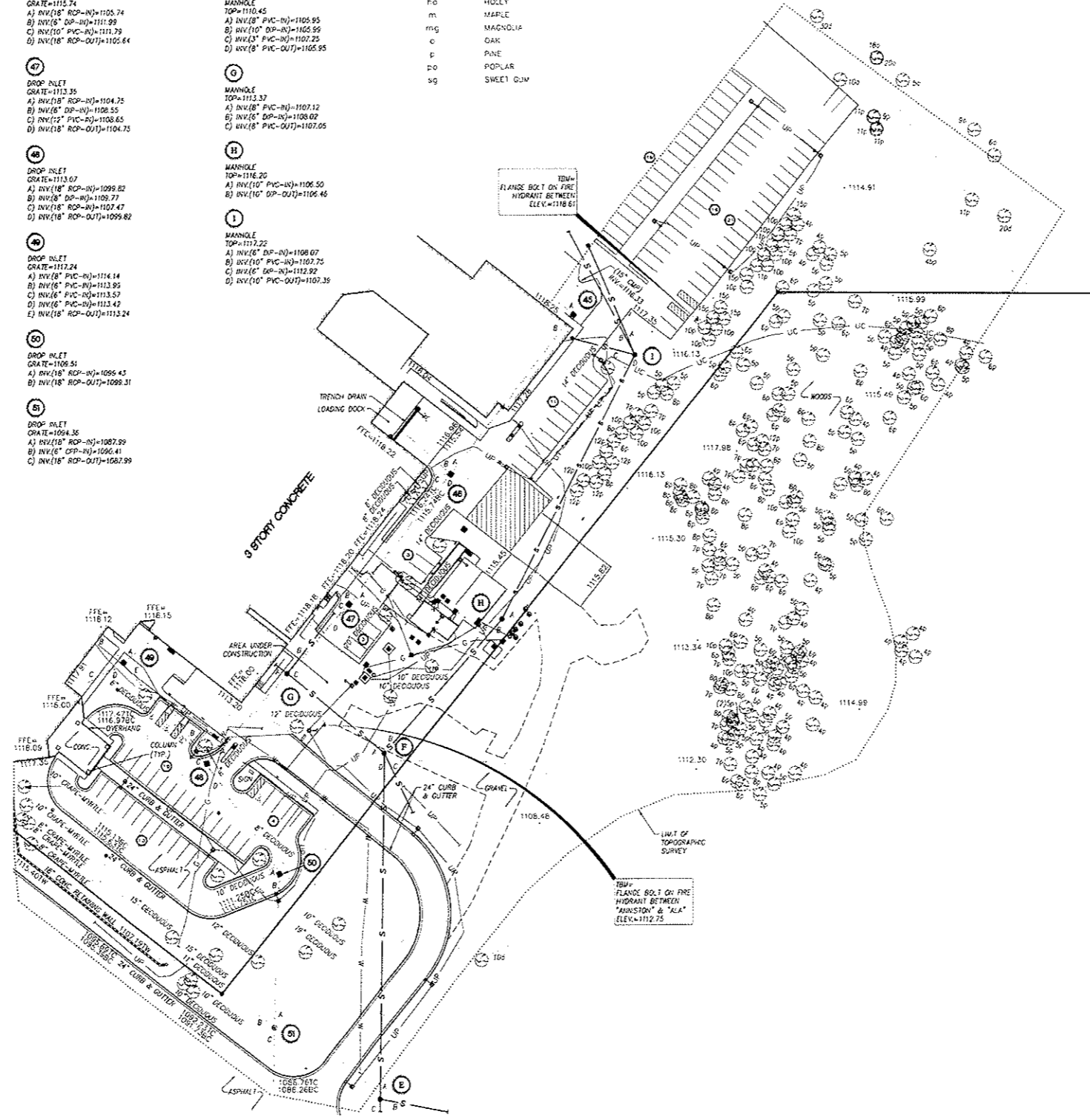
- 45
DROP INLET
GRATE=1112.53
A) INV(18" RCP-N)=1113.25
B) INV(18" RCP-OUT)=1113.23
- 46
DROP INLET
GRATE=1115.74
A) INV(18" RCP-N)=1105.74
B) INV(18" DP-N)=1111.98
C) INV(10" PVC-N)=1111.79
D) INV(18" RCP-OUT)=1101.64
- 47
DROP INLET
GRATE=1113.35
A) INV(18" RCP-N)=1104.75
B) INV(18" DP-N)=1105.55
C) INV(12" PVC-S)=1105.65
D) INV(18" RCP-OUT)=1104.75
- 48
DROP INLET
GRATE=1113.07
A) INV(18" RCP-N)=1099.82
B) INV(18" DP-N)=1109.77
C) INV(18" RCP-OUT)=1107.47
D) INV(18" RCP-OUT)=1099.82
- 49
DROP INLET
GRATE=1112.24
A) INV(8" PVC-N)=1114.14
B) INV(8" PVC-N)=1112.99
C) INV(6" PVC-N)=1113.57
D) INV(6" PVC-N)=1113.42
E) INV(18" RCP-OUT)=1113.24
- 50
DROP INLET
GRATE=1106.51
A) INV(18" RCP-N)=1096.43
B) INV(18" RCP-OUT)=1099.31
- 51
DROP INLET
GRATE=1094.36
A) INV(18" RCP-N)=1087.99
B) INV(6" CP-N)=1096.41
C) INV(18" RCP-OUT)=1087.99

SANITARY SEWER DATA

- E
MANHOLE
TOP=1090.31
A) INV(8" PVC-N)=1083.81
B) INV(8" PVC-N)=1083.68
C) INV(8" PVC-OUT)=1083.67
- F
MANHOLE
TOP=1103.45
A) INV(8" PVC-N)=1103.65
B) INV(10" DP-N)=1102.59
C) INV(8" PVC-N)=1107.25
D) INV(8" PVC-OUT)=1105.95
- G
MANHOLE
TOP=1113.37
A) INV(8" PVC-N)=1107.12
B) INV(6" DP-N)=1108.02
C) INV(8" PVC-OUT)=1107.05
- H
MANHOLE
TOP=1116.20
A) INV(10" PVC-N)=1106.50
B) INV(10" DP-OUT)=1106.46
- I
MANHOLE
TOP=1117.22
A) INV(8" DP-N)=1108.07
B) INV(10" PVC-N)=1107.75
C) INV(6" DP-N)=1112.92
D) INV(10" PVC-OUT)=1107.35

TREE LABEL LEGEND

- b BRCH
- bp BRADFORD PEAR
- ch CHERRY
- cm CRAWF-MYRTLE
- d DEODUOUS
- dg DOGWOOD
- f FRUIT
- h HEMLOCK
- ho HOLLY
- m MAPLE
- mg MAGNOLIA
- o OAK
- p PINE
- po POPLAR
- sg SWEET GUM



© Copyright 2005
Travis Pruitt & Associates, Inc.

These drawings and their reproductions are the property of the surveyor and may not be reproduced, or used in any way without the written permission of this surveyor.

This plot was prepared for the exclusive use of the person, persons, or entity named in the title block. Said use does not extend to any unname person without express permission by the surveyor naming the person.

Utilities:
Information regarding the reported presence, size, character and location of existing underground utilities and structures is shown hereon. There is no certainty of the accuracy of this information and a credit is considered in that light by those using this drawing. The location and engagement of underground utilities and structures shown hereon may be inaccurate and utilities and structures not shown may be encountered. The owner, his employees, his consultants and his contractors or anyone else who relies upon this survey, shall, hereby, expressly understand that the surveyor is not responsible for the correctness or sufficiency of this information.

Underground utility information shown was provided by RND Services, Inc.

Flood Hazard Note:
By graphic setting only, this property does not lie within a 100 year flood hazard zone and is depicted as zone "X" as defined by the F.E.M.A. Flood Insurance Rate Map of Fulton County, Georgia and incorporates creek maps number 13921 E 0054 E, effective date June 22, 1998, and 13121 C 0062 E effective date June 22, 1998.

The survey shown hereon was prepared without benefit of any abstract of title; therefore, Jan Adams and Travis Pruitt & Associates, Inc. make no guarantees or representations regarding information shown hereon pertaining to easements, rights-of-way, setback lines, encroachments, reservations, and other similar matters.

Zoning: OCMS (Office Commercial Multi-Story District)
The surveyor in no way intends to interpret or make conclusions regarding the zoning designation shown hereon. This information is reported from public information obtained from Fulton records on March 14, 2005.

Survey fieldwork performed on: March 28, 2005

This survey was authorized by: Larry Conlett representing North Fulton Regional Hospital.

The tract of land shown on this survey is for the client's convenience only. This survey is not intended to create new tracts of land or change existing tracts of land. This survey is not a subdivision plot and has not been approved by the correct jurisdictional authorities.

Certification:
This is to certify that this survey was made under my supervision and is a true representation of the facts surveyed. The field data upon which this survey is based has a precision of one foot in 20,000 feet, and an angular error of 5" per angle point, and was adjusted using the least squares. Angular and linear measurements were made using a Trimble 5603 Robotic Total Station. The date of this survey has been calculated for closure and is found to exceed one foot in 231,836 feet.

Jan Adams, State
Georgia Reg. Land Surveyor No. 2768
For the Firm Travis Pruitt & Associates, Inc.

Pursuant to Rule 180-6-09 of the Georgia State Board of Registration for Professional Engineers and Land Surveyors, the term "Certify" or "certification" relating to land surveying services shall mean a signed statement based on facts and knowledge known to the land surveyor and is not a guarantee or warranty, either expressed or implied.

Site Address:
1000 Hospital Boulevard
Roswell, Georgia

Zoning: OCMS (Office Commercial Multi-Story District)
Front Yard (Major Street): 75 feet
Front Yard (Minor Street): 20 feet
Side Yard (interior lot line): 10 feet
Side Yard (corner lot major street): 75 feet
Side Yard (corner lot minor street): 20 feet
Rear Yard: 55 feet

Area Summary:
Tract 1 = 10.57 acres
Tract 2 = 15.87 acres
Tract 3 = 18.76 acres
Total = 45.20 acres

Survey References:
1. As-built survey of North Fulton Medical Center prepared by Moreland Altabelli Associates, Inc., dated 10-30-90.
2. Above ground as-built survey for Connecticut General Life Insurance Company, North Meadow Associates Joint Venture, and Chicago Life Insurance Company prepared by Travis Pruitt & Associates, Inc., dated August 3, 1987, last revised 12-13-00. (7/11/27 0 1174)

Source of Benchmark:
NAVD 1988

Note:
There are additional improvements on the site outside of the limits of topographic survey which are not shown.

BOUNDARY, TOPOGRAPHIC & TREE SURVEY FOR
NORTH FULTON REGIONAL HOSPITAL
CITY OF ROSWELL
LAND LOT 596
1st DISTRICT - 2nd SECTION
FULTON COUNTY, GEORGIA
APRIL 5, 2005/SCALE: 1"=40'

4.5-05

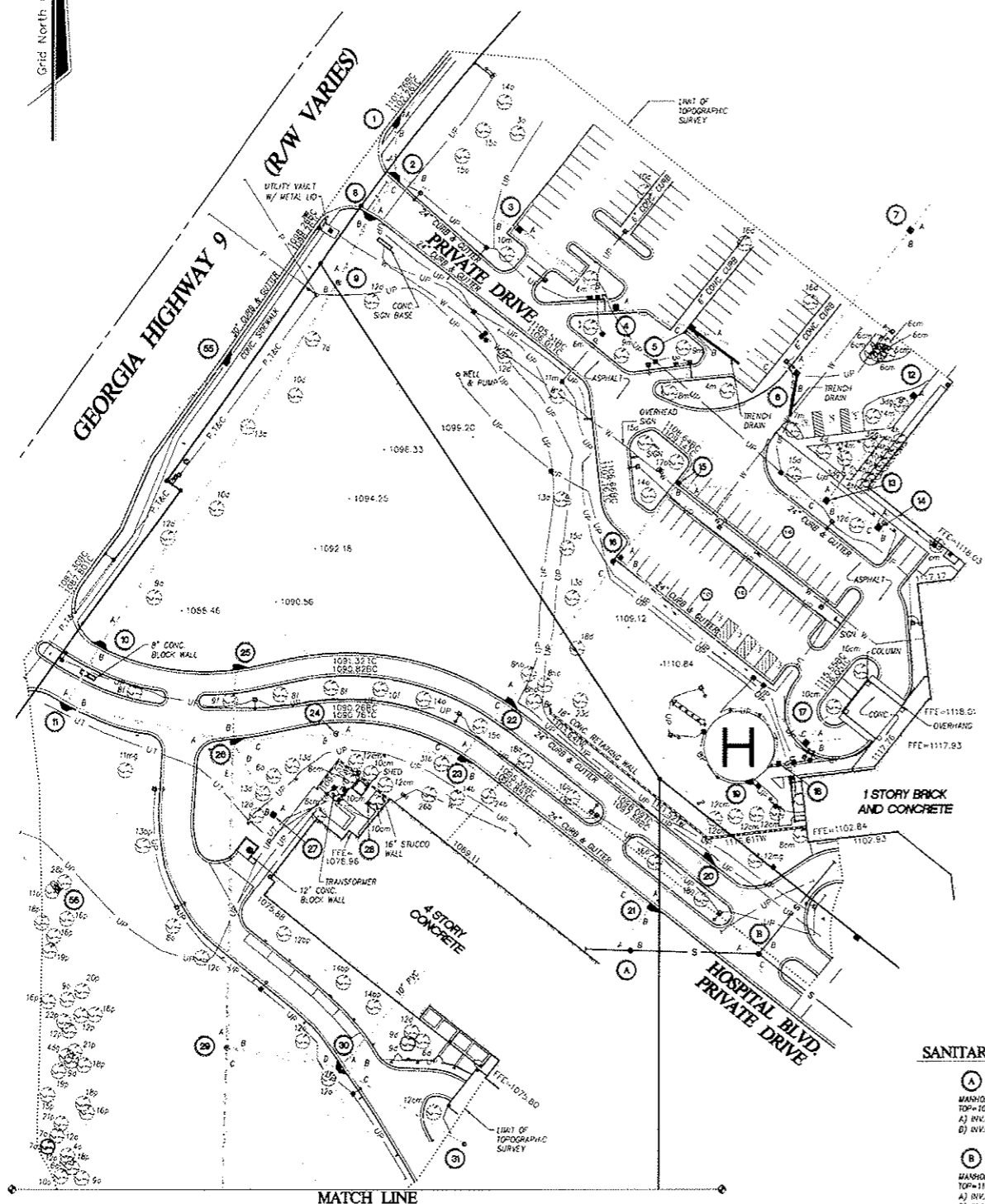
4317 Park Drive - Suite 400
Norcross, Georgia 30093
Phone: (770)416-7511
Fax: (770)416-6759
www.travispruitt.com

FOR THE FIRM
TRAVIS PRUITT & ASSOC., INC.

20-E-1448S.2

2 of 3

Grid North (CA West Zone)

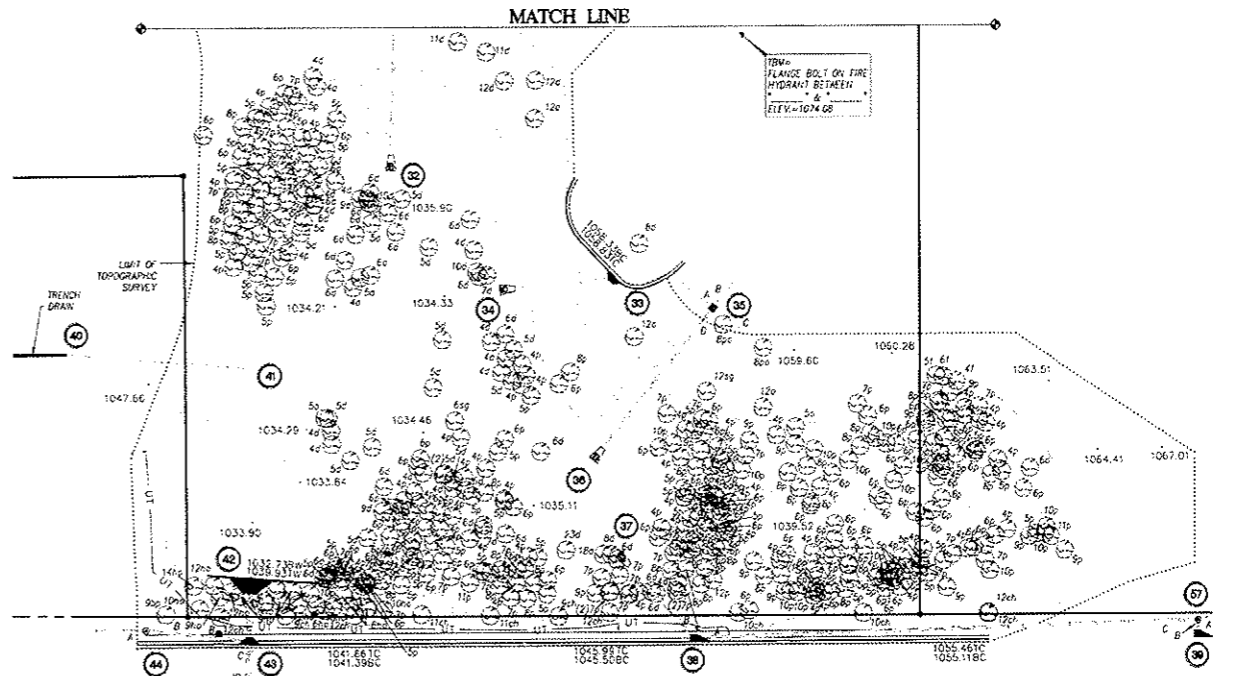


STORM SEWER DATA

1 CATCH BASIN TOP=1101.84 INT=1101.51 A) INV(15" RCP-IN)=1096.32 B) INV(18" RCP-OUT)=1096.32	2 CATCH BASIN TOP=1099.26 INT=1099.34 A) INV(18" RCP-IN)=1095.54 B) INV(18" RCP-IN)=1095.26 C) INV(24" RCP-OUT)=1095.06	3 DROP INLET GRATE=1104.93 A) INV(18" RCP-IN)=1099.83 B) INV(18" RCP-OUT)=1099.83	4 DROP INLET GRATE=1102.81 A) INV(18" RCP-IN)=1101.21 B) INV(18" RCP-OUT)=1101.07	5 DROP INLET GRATE=1110.80 A) INV(18" RCP-IN)=1105.40 B) INV(10" DP-IN)=1105.92 C) INV(18" RCP-OUT)=1105.35	6 DROP INLET GRATE=1113.92 A) INV(18" RCP-IN)=1106.81 B) INV(OPDING-IN)=1112.42 C) INV(18" RCP-OUT)=1106.77	7 DROP INLET GRATE=1115.14 A) INV(18" RCP-IN)=1108.23 B) INV(18" RCP-OUT)=1108.14	8 CATCH BASIN TOP=1099.54 INT=1098.62 A) INV(24" RCP-IN)=1094.73 B) INV(24" RCP-OUT)=1094.29	9 JUNCTION BOX TOP=1098.45 A) INV(24" RCP-IN)=1091.71 B) INV(24" RCP-OUT)=1091.71	10 CATCH BASIN TOP=1084.43 INT=1084.43 A) INV(24" RCP-IN)=1083.18 B) INV(24" RCP-OUT)=1078.57	11 CATCH BASIN TOP=1084.62 INT=1083.83 A) INV(24" RCP-IN)=1078.85 B) INV(24" RCP-OUT)=1075.57	12 DROP INLET GRATE=1117.46 A) INV(6" DP-IN)=1116.46 B) INV(12" CMP-OUT)=1115.82	13 DROP INLET GRATE=1115.39 A) INV(12" CMP-IN)=1113.04 B) INV(18" RCP-IN)=1108.99 C) INV(18" RCP-OUT)=1108.99	14 DROP INLET GRATE=1117.09 A) INV(18" P/C-IN)=1115.49 B) INV(6" DP-IN)=1113.57 C) INV(18" RCP-OUT)=1110.29	15 DROP INLET GRATE=1108.10 A) INV(18" RCP-IN)=1105.10 B) INV(18" RCP-OUT)=1105.06	16 DROP INLET GRATE=1106.90 A) INV(18" RCP-IN)=1098.35 B) INV(18" RCP-IN)=1092.45 C) INV(18" RCP-OUT)=1093.45	17 DROP INLET GRATE=1116.00 A) INV(12" P/C-IN)=1110.90 B) INV(8" DP-IN)=1112.35 C) INV(18" RCP-OUT)=1110.72	18 DROP INLET GRATE=1116.39 A) INV(18" RCP-IN)=1084.59 B) INV(18" RCP-OUT)=1084.59	19 DROP INLET GRATE=1116.59 A) INV(18" RCP-IN)=1084.59 B) INV(18" RCP-OUT)=1084.59	20 CATCH BASIN TOP=1089.42 INT=1088.75 INV(18" RCP-OUT)=1082.52	21 CATCH BASIN TOP=1089.67 A) INV(18" RCP-IN)=1082.27 B) INV(4" P/C-IN)=1082.82 C) INV(18" RCP-OUT)=1082.27	22 CATCH BASIN TOP=1094.89 INT=1093.92 A) INV(18" RCP-IN)=1090.41 B) INV(4" DP-IN)=1090.99 C) INV(18" RCP-OUT)=1090.39	23 CATCH BASIN TOP=1094.15 A) INV(18" RCP-IN)=1089.75 B) INV(18" RCP-IN)=1089.75 C) INV(18" RCP-OUT)=1088.75	24 JUNCTION BOX TOP=1090.59 A) INV(18" RCP-IN)=1084.59 B) INV(18" RCP-OUT)=1084.59	25 CATCH BASIN TOP=1088.12 INV(18" RCP-OUT)=1080.12	26 CATCH BASIN TOP=1087.35 A) INV(24" RCP-IN)=1077.85 B) INV(18" RCP-IN)=1077.69 C) INV(18" RCP-IN)=1080.85 D) INV(18" RCP-IN)=1073.03 E) INV(24" RCP-OUT)=1048.80	27 DROP INLET GRATE=1076.90 A) INV(8" RCP-IN)=1073.76 B) INV(18" RCP-OUT)=1073.60	28 DROP INLET GRATE=1076.78 INV(8" P/C-IN)=1077.02	29 JUNCTION BOX TOP=1065.18 A) INV(24" RCP-IN)=1044.46 B) INV(18" RCP-IN)=1053.22 C) INV(24" RCP-OUT)=1035.04 BOTTOM BOX=1034.28	30 CATCH BASIN TOP=1071.57 INT=1070.55 A) INV(18" RCP-IN)=1064.85 B) INV(4" P/C-IN)=1065.09 C) INV(18" RCP-IN)=1065.46 D) INV(24" RCP-OUT)=1062.02	31 CLEANOUT TOP=1075.04 INV(8" P/C)=1068.34	32 FLARED END SECTION INV(24" RCP)=1033.97	33 CATCH BASIN TOP=1068.23 INV(18" RCP-OUT)=1043.50	34 FLARED END SECTION INV(18" RCP)=1034.73	35 DROP INLET GRATE=1058.74 A) INV(6" P/C-IN)=1054.28 B) INV(15" P/C-IN)=1054.16 C) INV(6" P/C-IN)=1054.27 D) INV(18" RCP-OUT)=1053.59	36 FLARED END SECTION INV(18" RCP)=1033.37	37 FLARED END SECTION INV(24" RCP)=1036.08	38 CATCH BASIN TOP=1042.01 A) INV(24" RCP-IN)=1036.66 B) INV(24" RCP-OUT)=1036.66	39 CATCH BASIN TOP=1061.14 A) INV(24" RCP-IN)=1049.88 B) INV(24" RCP-IN)=1054.49 C) INV(24" RCP-OUT)=1049.88	40 INV(6" P/C)=1048.84	41 INV(6" P/C)=1020.65	42 OUTLET CONTROL STRUCTURE TOP=1040.50 INT=1035.23	43 CATCH BASIN TOP=1041.17 A) INV(54" RCP-IN)=1030.97 B) INV(18" CMP-IN)=1033.97 C) INV(54" RCP-OUT)=1030.87	44 JUNCTION BOX TOP=1041.99 A) INV(18" CMP-IN)=1037.69 B) INV(18" CMP-OUT)=1037.29	45 HEADWALL INV(54" RCP)=1038.07	46 CATCH BASIN TOP=1095.09 INT=1094.18 INV(15" RCP-OUT)=1090.37	47 FLARED END SECTION INV(24" RCP)=1071.68	48 JUNCTION BOX TOP=1061.14 A) INV(24" RCP-IN)=1049.88 B) INV(24" RCP-IN)=1054.49 C) INV(24" RCP-OUT)=1049.88
---	---	---	---	--	--	---	---	---	--	--	--	--	--	--	--	--	--	--	---	--	--	---	--	--	---	---	---	--	---	--	--	--	--	--	--	--	---	---	---------------------------	---------------------------	--	---	--	--	---	--	--

SANITARY SEWER DATA

- A) MANHOLE
TOP=1096.46
A) INV(6" P/C-IN)=1093.69
B) INV(6" DP-OUT)=1093.57
- B) MANHOLE
TOP=1100.28
A) INV(6" DP-IN)=1092.03
B) INV(8" DP-IN)=1091.74
C) INV(10" DP-OUT)=1091.49

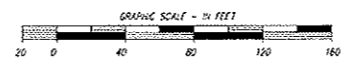


LOWER HEMBREE ROAD (R/W VARIES)

BOUNDARY, TOPOGRAPHIC & TREE SURVEY FOR
NORTH FULTON REGIONAL HOSPITAL
 CITY OF ROSWELL
 LAND LOTS 554 & 596
 1st DISTRICT - 2nd SECTION
 FULTON COUNTY, GEORGIA
 APRIL 5, 2005/SCALE: 1"=40'



4317 Park Drive - Suite 400
 Norcross, Georgia 30093
 Phone: (770)416-7511
 Fax: (770)416-6759
 www.travispruitt.com



NO.	DATE	BY	DESCRIPTION
1	06/25/05	TRAVIS PRUITT	ISSUE FOR PERMIT